

KCA

KANSAS CATTLEMEN'S ASSOCIATION

Convention

KCA News: Convention Edition - October 2018

20th Annual KCA Convention & Trade Show - November 9th & 10th

The Kansas Cattlemen's Association's (KCA) Annual Convention and Trade Show will kick off on Friday, November 9, 2018. Registration will begin at noon at the Meridian Center in Newton, Kansas. Livestock Brand Inspector and Special Agent, Kendal Lothman, will provide a presentation on "Livestock Theft in Kansas". Dr. Don Coover of SEK Genetics will follow with a presentation on quality herd production and genetics.

The KCA membership will hold the annual KCA business meeting at 4:30pm. The meeting consists of policy resolution review and approval. A mail-in ballot will then ratify the membership meeting decisions. Friday evening is set to include a cattlemen's bbq and social with free live entertainment by cowboy poet & western singer, Geff Dawson.



Saturday, November 10th, is set to be a day full of expert speakers beginning with a presentation by Lance Sharp of Copeland Insurance and Stephanie Bittner of State Auto on the State Auto Affinity Dividend Program. Shane New of Holton, an independent producer and soil conservation expert, will share his knowledge and expertise on optimum soil health and conservation. Dr. Tom Noffsinger of Production Animal Consultation will follow with a stockmanship presentation. Dr.

Tom specializes in animal handling, facility design, and staff development. Tracy Hunt, a Wyoming livestock producer and attorney will wrap up with a talk on the Global Roundtable for Sustainable Beef initiative. He will discuss the impact GRSSB has on independent producers and the cattle market.

The convention will close with an evening social sponsored by Ruma-Lic Liquid Feed, the KCA Annual Benefit Auction, and finally the KCA Banquet with keynote speaker, Robert Baker, Agriculture Research Specialist.

The KCA Trade Show will take place concurrent to the convention. With over 30 production-agriculture exhibitors, the trade show covers feed, pharmaceuticals, equipment, insurance, financial and commodity services, legal services, and much more. Visit the free trade show November 9th from noon

to 4pm and November 10th 8:45am to 4pm.

All events are free and open to the public. Meals are an extra charge, with a full registration providing the best value. Additional information, including the full schedule, is available online at www.kansascattlemen.com/convention. Please RSVP or register online, or you may call 785-238-1483. KCA does provide student/child registration and press pass discounts.

KCA Committee Policy Meetings and Annual Business Meeting Scheduled

The KCA Board of Directors and staff depend on input from our members to help set the direction of our policy. Fake Meat, World Wildlife Fund, Beef Checkoff, COOL, GIPSA: these are a few of the numerous topics that need addressed.

The KCA Annual Membership Meeting will take place on **Friday, November 9, 2018 at 4:30 p.m.** at the Meridian Center in Newton, Kansas. This meeting is the one time each year where KCA Members come together to review and set policy resolutions. This is a serious order of business, and we hope you will make the time to attend this meeting.

Policy committee meetings will be on Friday, November 9th beginning at 10am. This is a time especially set aside prior to the Annual Membership Meeting in order to review current resolutions, propose modifications to existing and draft entirely new resolutions. Committees included are Animal Health & Welfare, Rural Rights & Economic Development, Country of Origin Labeling, Marketing & Trade, Value Added Programs, and Beef Checkoff.

Please RSVP for the committee meetings by calling the KCA offices at 785-238-1483 or email cowsrus@kansascattlemen.com.

Board of Directors

Shawn Mills

President

Grenola, KS

(620)205-8100

shawnmills@gmail.com

Perry Owens

Vice President

(785)392-2184

Minneapolis, KS

ocfi@nckcn.com

Greg Davis

Sec./Treasurer

Madison, KS

(620)340-9534

ranchlandfeeds@gmail.com

Dave Murphy

Emporia, KS

(620)481-9607

davemurphy1720@gmail.com

Tony Anderson

Farlington, KS

(620)724-2860

tylertammytony@gmail.com

Pete Fish

Cosby, MO

(816)289-6168

prfish728@gmail.com

Nicole Pfrang

Goff, KS

(785)285-1066

nicpfrang@gmail.com

Andy Miller

Fall River, KS

(620)289-6168

andymiller2004@gmail.com

Contact KCA

P.O. Box 1489

Junction City, KS 66441

Phone 785-238-1483

Fax 785-238-1518

kansascattlemen.com

cowsrus@kansascattlemen.com



110060188216



@kansascattlemen

Cattle Theft In Kansas - Prevention & Enforcement



Kendal Lothman will discuss cattle theft in Kansas. He has been a Special Agent with the Kansas Attorney General's Office assigned to the Livestock and Brand Investigation Unit since November 2014. Lothman holds a degree in criminal justice and has been a law enforcement officer for over 26 years.

Special Agent Lothman previously served 13 years with the Kiowa County Sheriff's Office, and six years as the Kiowa County Sheriff. He also spent two years with Kiowa County Emergency Management as part of the long term recovery after the 2007 Greensburg tornado.

Born and raised a Kansan, Lothman has spent his entire life in Western Kansas. Kendal and his wife, along with their three sons, enjoy spending time together on horseback. He has spent a large portion of his life in the saddle and taking care of other people's cattle. Lothman advises cattlemen to brand cattle, keep gates locked, check cattle regularly, and immediately report to law enforcement when cattle are missing. Lothman speaks at 1:30p.m. on Friday.

Regenerative Agriculture Critical to Maintaining Profitability



Shane New is a stockman and entrepreneur from Holton, Kansas. He is a graduate of Kansas State University. Shane was a civil contractor and sod producer for 20 years prior to completely focusing on regenerative agriculture. He has been focusing on soil health practices for many years. Some of these practices include no-tilling, cover crops, rotational grazing, and adaptive grazing.

After examining his fertilizer and topical application inputs for his farm's production he concluded there had to be a more economical and conservation-minded approach to soil health on his farm operation. One that did not include huge cost inputs for fertilizer and weed control but also ensured regenerative nutrients and longevity of soil health. After a collective period of trials and errors, Shane was able to establish positive and verifiable results in his new-found approaches to soil health and integrity.

Shane and his wife Kelli have three children. They own and operate New Family Farms located in Holton, Kansas. The farm consists of cover crops, cattle, and free range chickens. They currently market their meat and eggs.

Shane and New Family Farms received the Soil Health Award in 2017 by the Jackson County Conservation District. This was awarded for outstanding accomplishments in the management of soil health and related sources. Shane also completed Dr. Elaine Ingham's Life in the Soils courses. His passion is production agriculture and believes that the future for agriculture and human health has to come from regenerative agricultural practices. New speaks at 10:00a.m. on Saturday.

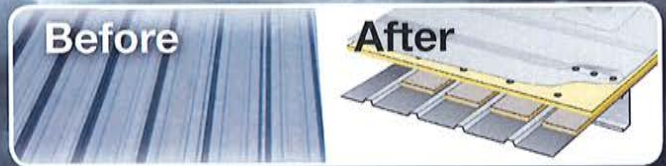


WATER TIGHT
ROOFING

COOLER COWS ARE HAPPIER COWS!

Elastomeric Coating

Single Ply Membrane



Claus Dairy Farm Dalhart

Centramatic

**No tear off and no disruption
to your production.**



"This was a very clean operation. It didn't cost more or take longer. They did exactly what they said they would do."

Dyke Rogers
Owner - CDFD

"WaterTight's commitment to excellence is just that - WaterTight!"

Larry Easley
Storage Management Associates, Inc
TSSA Board of Directors 2012-2015



Serving Kansas, Texas, and Oklahoma

888-809-9976

www.watertightroofinginc.com



Message from the President.....Shawn Mills

We have experienced some steady cash trades on cattle for quite a few weeks now. Looking ahead, if demand remains firm or increases slightly, we may see the trade increase. Either way, the steady pace is keeping the market strong and that is positive.

Steady drying has led to some activity for the fall harvest. Historically, harvest is on track if not ahead slightly, but rain delays have caused some headaches. My hope is that everyone can get their harvest completed safely and in a timely enough manner to reap some benefits from your investment and work.

We are heading to the KCA Convention on Nov. 9 and 10. It is right around the corner, and I am looking forward to seeing everyone. The KCA Board discussed the resolutions during our regular board meeting in October. There are 15 resolutions set to expire this year that need attention. We also thought it would be a good idea to discuss possible resolu-

tions pertaining to the alternative protein labeling and the test tube beef. We should be ready to review the National ID Plan resolution due to the CattleTrace program introduction. The committees will help outline those on Nov 9, so come take part in the discussion.

Aside from policy meetings and the annual business meeting, there are some excellent presentations lined up, entertainment, and the sold-out trade show. I consider it an investment in my own operation. Ultimately, there is value in taking the time to at least attend in-part.

See you in Newton,
Shawn Mills



You value two things on your ranch: time and money.

At State Auto, we make it easy to get the right coverages at a competitive price. We have over 80 years of farm and ranch expertise. Your time is important and we know that. As a Kansas Cattlemen's Association member, you'll get exclusive benefits such as specialized coverages, competitive pricing and dividend potential.

Protect what matters most... your family and your farm. Our agents are your friends and neighbors, they get to know you and your ranch. To find a local agent, visit StateAuto.com/FindAnAgent.



State Auto Property/Casualty Affinity Dividend Program Membership Benefit

Representatives from State Auto Farm and Ranch Insurance and Copeland Insurance Agency will outline the benefits of the State Auto Affinity Dividend Program. The program is free and available to all KCA members that own State Auto Farm and Ranch policies. Lance Sharp and Stephanie Bittner will be available to answer questions during the KCA Convention.

Lance Sharp is an independent insurance agent with Copeland Insurance, and has been a member of the Kansas Cattlemen's Association for many years. Lance and Copeland Insurance Agency represent various insurance carriers, allowing him to accurately compare rates and coverages; ensuring his clients receive the quality protection they deserve. Their extensive network of providers ensures that they can tailor the perfect insurance solution.



Stephanie Bittner is a program coordinator and marketing professional at State Auto Insurance Companies in the Farm & Ranch department. Prior to joining State Auto in 2012, Stephanie worked as an underwriter for a Farm & Ranch insurance broker. She graduated from Indiana State University with a degree in Insurance & Risk Management. She has obtained her Agribusiness and Farm Insurance Specialist (AFIS) designation. Stephanie resides in southern Indiana with her husband and seven month old son.



Lance and Stephanie will give their presentation on Saturday, November 10th at 9:15am. They will also have a booth during the trade show. State Auto is a proud sponsor of the KCA Convention.

CIA COPELAND INSURANCE AGENCY

**MANHATTAN - ABILENE - JUNCTION CITY - KANSAS CITY
MARYSVILLE - RILEY - SALINA - TOPEKA - WAMEGO
WE ARE A STATE AUTO LICENSED AGENCY**

SERVICING ALL OF KANSAS

**OUR AGENCY CREATED THE FARM DIVIDEND PROGRAM WITH
YOUR NEEDS IN MIND**

CONTACT US TODAY AND SEE IF STATE AUTO IS A GOOD FIT FOR YOUR OPERATION



JAY COPELAND
785-410-5509



LANCE SHARP
785-656-2686



LINDEN STUEVE
620-794-8359



MIKE SPOHN
785-210-6155

**Specializing in innovative risk management strategies for farmers and
commercial agriculture!**

ADVERTORIAL

Fall Deworming Is an Integral Part of a Parasite Control Program

By Dr. Douglas Ensley, technical marketing manager at Boehringer Ingelheim

If you haven't already introduced fall deworming into your parasite-control strategy, now might be the time to start. Some of the most infamous parasites, such as the brown stomach worm, are tougher than we give them credit for, and can survive through even the harshest weather conditions.¹

Fall deworming will kill parasites picked up during the grazing season and prevent egg shedding for the first portion of spring. Cows that are dewormed in the fall can be expected to winter better, have a higher conception rate the next breeding season, and wean heavier calves.² Consider the following to ensure that your fall parasite-control program is effective:

1 Consult a veterinarian when developing your deworming protocols, as parasite challenges vary from herd to herd. Your herd veterinarian is your best cattle parasite resource, and will help you develop a control program tailored to your operation's specific needs and production goals.

2 Incorporate management practices that include a proper nutrition and health program. These practices have been shown to help reduce parasite pressure and keep cattle better protected against parasites.³



3 Use a scale and dose each animal according to the dewormer's product label. A common practice is dosing to the average weight of the herd. While convenient, doing so can under-dose a significant number of cattle which will increase the risk of parasite resistance and diminish product efficacy, while over-dosing wastes product and money.

4 Take advantage of available tests. Conducting a coproculture (a technique of allowing parasite eggs to hatch and identify species of parasite involved) can help identify which species you're fighting, and a fecal egg count reduction can determine the efficacy of your current deworming program.

5 Keep detailed treatment records. They can help you determine if your treatment protocol is working effectively, track product-meat withholding time, and monitor the performance of your cattle.

6 Choose a dewormer that can provide season-long protection with a 100 percent satisfaction guarantee, like LongRange® (eprinomectin).⁴ It's the first extended-release injectable cattle dewormer that provides producers 150 days of parasite control in a single dose.⁴

LONGRANGE is available through a prescription from your veterinarian. For more information about how you can incorporate it into your deworming strategy, visit www.theLONGRANGElook.com.

IMPORTANT SAFETY INFORMATION: Do not treat within 48 days of slaughter. Not for use in female dairy cattle 20 months of age or older, including dry dairy cows, or in veal calves. Post-injection site damage (e.g., granulomas, necrosis) can occur. These reactions have disappeared without treatment.



References:

¹ Myers GH and Taylor RF. Ostertagiasis in cattle. J Vet Diagn Invest 1989;1:195-200. Available at: <http://journals.sagepub.com/doi/pdf/10.1177/104063878900100225>. Accessed July 28, 2018.

² Rinaldi M, Dreesen L, Hoorens P, et al. Infection with the gastrointestinal nematode *Ostertagia ostertagi* in cattle affects mucus biosynthesis in the abomasum. Vet Res 2011;42(1):61. Available at: <https://www.ncbi.nlm.nih.gov/pmc/articles/PMC3102617/>. Accessed July 28, 2018.

³ Gadberry S and Powell J. Internal parasites in beef and dairy cattle. University of Arkansas Cooperative Extension. Available at: <https://www.uaex.edu/publications/PDF/FSA-3045.pdf>. Accessed July 28, 2018.

⁴ LONGRANGE product label and FOI summary.

Merial is now a part of Boehringer Ingelheim. LongRange is a registered trademark of Merial. ©2018 Boehringer Ingelheim Vetmedica, Inc. BOV-1614-ANTH0918

President Trump Administration: United States-Mexico-Canada Agreement

Nearly 25 years following the ratification of the North American Free Trade Agreement (NAFTA) under President Clinton, the midnight oil burned just so slightly as the US, Mexico, and Canada finally struck a deal and announced the framework for a new, revised NAFTA. The agreement, now known as the United States-Mexico-Canada Agreement (USMCA) included the provision that cars and trucks must have 75 percent of their components manufactured in Mexico, the US, or Canada to qualify for zero tariffs. This is a substantial increase from 62.5 percent in the original NAFTA facing domestic producers, but what about beef?

While origin of automotive parts is important, President Trump had previously promised to restore country of origin labeling. Restoring COOL was once part of President Trump's policy agenda. However, Trump's agricultural team has consistently strayed from the COOL platform since taking office. Some producer sentiments are shifting, believing the Trump Administration has been swayed by corporate agribusiness-representatives. The upcoming elections will determine where agriculture-related constituencies are with the President and his administration. The election will test the administration, and one likely passed with flying colors.

There may still be hope on the horizon for U.S. cattle producers despite the shortfall on COOL being injected into the new USMCA. This new agreement puts in a 16-year "sunset" clause, meaning the terms of the agreement expire, or "sunset," after a set period. The deal is also

subject to a review every six years, at which point the US, Mexico, and Canada can decide to extend USMCA. It is a compromise from the five-year sunset clause that the Trump administration originally proposed. If approved, most of the agreed trade provisions will not go into effect until 2020. With a lengthy time-line for Mexican, Canadian and US government approvals in place, U.S. cattle producers still have an opportunity to be heard and to fight for balanced trade mechanisms as well as country of origin labeling specifications.



CATTLE MATS WITH PROVEN PREVENTION

Non-slip and durable cattle mats from Double D Mats make unforgiving surfaces comfortable for all your cattle.



please contact us

p. 1.888.377.2879
w. DoubleDMats.com

The best kept secret in the feed business!

Liquid+
FEEDS

...has reduced pulls and death loss by more than 50% and also reduced antibiotic costs by more than 75%...

Make an impact on your operation.

IMPACT+DRENCH

PROBIOTIC / ENZYME / NUTRITIONAL DRENCH

Steve Garton - 620-664-0252 Derrick England - 785-263-6488

SWIHART
Sales Company
- Mist Sprayers -

Excellent for spraying cattle, nurseries, vegetables, vineyards, orchards, Christmas Trees, livestock, mosquitos, chicken houses, etc.
American Made

References available in your area
Low Maintenance • High Performance • FREE Shipping

S.I. Feeders
Swihart Sales Company
7240 County Road AA, Quinter, KS

785-754-3513 or 800-864-4595
www.swihart-sales.com

Dr. Don Coover to Address KCA Convention with Genetics Presentation



As a young man, Dr. Don Coover served in the U.S. Army upon graduation from West Point Military Academy. From there he went on to pursue a degree in Veterinary Medicine and graduated from Kansas State University. Don and his wife, Traci, live on a cattle ranch in Galesburg, Kansas.

Throughout the years, SEK Genetics has utilized new technologies with the goal of making the cattle and small ruminant herd more productive, more profitable, and more enjoyable than ever. Along with these producer friendly, inexpensive and more accurate technologies, Don was able to add to the team an additional veterinarian, Dr. Clem Neely, and a small ruminant reproduction specialist, Ryan Page. With their combined knowledge and expertise, SEK Genetics has been able to expand services.

Currently they are offering embryo collection and transfer, IVF, artificial Insemination (AI), AI training, heifer development, and veterinary services. Lab services include: bioPRYN pregnancy testing for cattle, sheep, goats, and bison, BVD PI, Johnes, Bovine Leukosis, Neospora, and CAE and OPP for goats and sheep.

Dr. Coover is looking forward to discussing these new technologies with you and is hopeful that everyone will discover something that benefits their operation. Dr. Coover will speak at 2:30p.m. on Friday.

Since 1989, Don has owned and operated SEK Genetics, a company specializing in offering advanced reproductive technologies to beef cattle and goat and sheep producers, both locally and over much of the central U.S. Dr. Coover has been involved in providing veterinary services specializing in livestock reproduction for over 30 years with continuous growth in the industry.

SEK Genetics is most widely known for beef and show cattle semen distribution services and its diagnostic

Dr. Tom Returning to Convention for Annual Update on Stockmanship



Dr. Tom Noffsinger grew up on a diversified ranch and farm near Wray, Colo., where his family raised beef, swine, crops, and operated a small dairy. Dr. T, as his

colleagues and clients affectionately call him, had wanted to be a veterinarian since the fourth grade. Fortunately, the family farm was 100 yards inside the Colorado state line which gave him the opportunity to attend Colorado State University as an in-state student.

After graduation, Dr. T joined Dr. Don Hudson in his mixed practice, Twin Forks Clinic, in Benkelman. Dr. Hudson was both Dr. T's mentor and eventual practice partner. In 1994, Dr. T graduated from the Beef Production Management Series at the Great Plains Veterinary Education Center, University of Nebraska, Lincoln. His professional life took an interesting turn when he learned about Bud Williams, and then convinced the expert in stockmanship and low-stress cattle handling to live and teach in Benkelman for several years.

"I'm a magnet for people who are better than me; I don't know, maybe they feel sorry for me," said Dr. T. "It was amazing to watch Bud. He changed the way we worked with cattle. We came to understand that every time you are in contact with an animal it should be a positive experience for both you and the animal.

"Wherever we encourage cattle to move to, they should perceive they belong there. When we focus on the voluntary movement of animals, and people who volunteer to learn low-stress handling, well, that changes the world. We understand and use the animal's visual abilities, posture angle, language, speed, and attitude – all cues to help us work with rather than against their nature."

In 2005, after 32 years in beef cattle practice at the Twin Forks Clinic, Dr. T became an independent feedlot consultant specializing in facility design, stockmanship and low-stress livestock handling. He also is an owner/member of Production Animal Consultation, Pierson Precision Auscultation, and the Cattle Performance Enhancement Company. He was the recipient of the 2001 Consultant of the Year award from the Academy of Veterinary Consultants for his work at PAC. Dr. Tom will speak at 1:30p.m. on Saturday.

20th Annual Kansas Cattlemen's Association Convention & Trade Show

Exhibitors

AG-Boost
 Conklin Cars
 Copeland Insurance
 Executive Intelligence Review
 GoBob Pipe & Steel Sales
 Hampel Oil
 HydraBed by Triple-C.-Inc.
 Insure My Forage
 Primetime Livestock Video
 Joplin Regional Stockyards
 Kansas Agricultural Mediation Services
 Kansas Soybean Commission
 Kauffman Seeds, Inc.
 Lewis Cattle Oilers
 Liquid+ Feeds
 Livestock Nutrition Center
 Miller County Regional Stockyards
 Mullerhaus
 Multimin USA, Inc.
 Natures Formula
 RanchLand Feed
 ADM Alliance Nutrition
 Roto-Mix LLC.
 Ruma-Lic Liquid Feed, LLC.
 Schwieterman, Inc.
 State Auto Farm & Ranch Insurance
 Straits Financial, LLC.
 Sugar Creek Sales
 SweetPro Premium Feeds
 The Victor L Phillips Co.
 WaterTight Roofing
 Westway Feed Products

Sponsors

Corporate

GoBob Pipe & Steel Sales
 WaterTight Roofing, Inc.

Prime

Animal Health International
 Foote Cattle Co./Hoxie Feedyard
 KFRM 550AM
 RanchLand Feed, LLC.
 ADM Alliance Nutrition
 Ruma-Lic Liquid Feed, LLC.
 State Auto Farm and Ranch Insurance

Choice

AG-Boost * Allan & Deanna Sents
 Eureka Livestock Sales
 Huvepharma, Inc.
 HydraBed by Triple-C.-Inc.
 IDEXX Laboratories
 Insure My Forage
 INTRUST Bank, NA
 JL Angus – Lee & Janet Robbins
 Joplin Regional Stockyards
 Primetime Livestock Video
 Natures Formula
 PlainJan's
 Rawhide Portable Corral, Inc.
 Schwieterman, Inc.
 ShurWrapTM

Select

Dallas & Sarah Luthi High-Bred Simmental
 Dodge City International, Inc.
 Double D Family Mat Shop
 Emporia Livestock Sales Co.
 Feed Train, LLC.
 High Plains Farm Credit
 Kauffman Seeds, Inc.
 Paola Livestock Auction
 Ottawa County Feeders
 Peck Bros. Cattle Co.
 Rex Stanley Feedyard, Inc.
 Schreiber Red Angus Gary & Annette

Contributor

AgRisk Advisors * Agri Trails COOP
 Central Livestock * Conklin Cars
 Countryside Feed, LLC.
 DeLange Seed House, Inc.
 El Dorado Livestock Auction, Inc.
 Emprise Bank * Farm Talk Newspaper
 First Bank Kansas * KEY Feeds
 Mid Kansas Cooperative
 Midwest Mixer Service, LLC.
 Mix 30 Liquid Feed * Mullerhaus
 Multimin USA, Inc. * Lewis Cattle Oilers
 Liquid+ Feeds * Roto-Mix, LLC.
 Skyland Grain, LLC.
 Travis Scale Company
 Valley Vet Supply * XTRA FACTORS

Schedule of Events

(Presentations and times may vary.)

Friday, November 9, 2018

10:00 AM Policy Submissions Open

Committee Meetings

10:00 AM Animal Health & Welfare
 10:00 AM Rural Rights & Economic Development
 10:30 AM Marketing & Trade
 10:30 AM Country of Origin Labeling
 11:00 AM Kansas Cattlemen's Beef Cooperative
 11:30 AM Beef Checkoff
 12:00 PM Guest Registration/Trade Show Opens
 1:15 PM Convention Opening Presentation
 1:30 PM 'Cattle Theft in Kansas' - Kendal Lothman
 2:30 PM 'Livestock Genetics' - Dr. Coover
 3:30 PM Break
 4:30 PM Deadline for Policy Pre-Submissions
 4:30 PM Annual Membership Meeting
 7:00 PM KCA Cattlemen's Supper & Social
 Entertainment – Geff Dawson

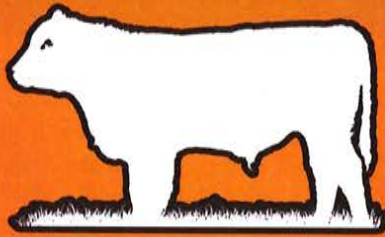
Sponsored by Rawhide Portable Corral & Eureka Livestock Sales

Saturday, November 10, 2018

8:45 AM Trade Show Opens
 9:15 AM 'Affinity Dividend Program' - Lance Sharp
 10:00 AM 'Soil Regeneration' - Shane New
 10:45 AM Break/Trade Show
 11:15 AM 'Market Update' with Schwieterman, Inc.
 12:00 PM Luncheon
 1:30 PM 'Cattle Stockmanship' - Dr. Noffsinger
 2:45 PM Break
 3:15 PM 'Exposing GRBSB' - Tracy Hunt
 4:30 PM KCA Social
 Sponsored by RumaLic Liquid Feed
 5:00 PM KCA Benefit Auction
 7:30 PM Annual Banquet
 Keynote Speaker – Robert Baker

Holiday Inn Express
 1430 E Broadway Ct
 Phone: (316) 804-7040

Comfort Inn & Suites
 1205 E 1st St.
 Phone: (316) 804-4866



GOBOB PIPE & STEEL

CORRAL & FENCING MATERIALS



FORTRESS FENCE



MONSTER FENCE



HEAVY DUTY GATES



**TOP RAIL
POST
PIPE
POST CAPS**

**STEEL MAGIC
RODS
CLAMPS
POST LATCHES**



CABLE

CATTLE WORKING EQUIPMENT



**CUSTOM
CATTLE FLOW
COWBOY ALLEY**



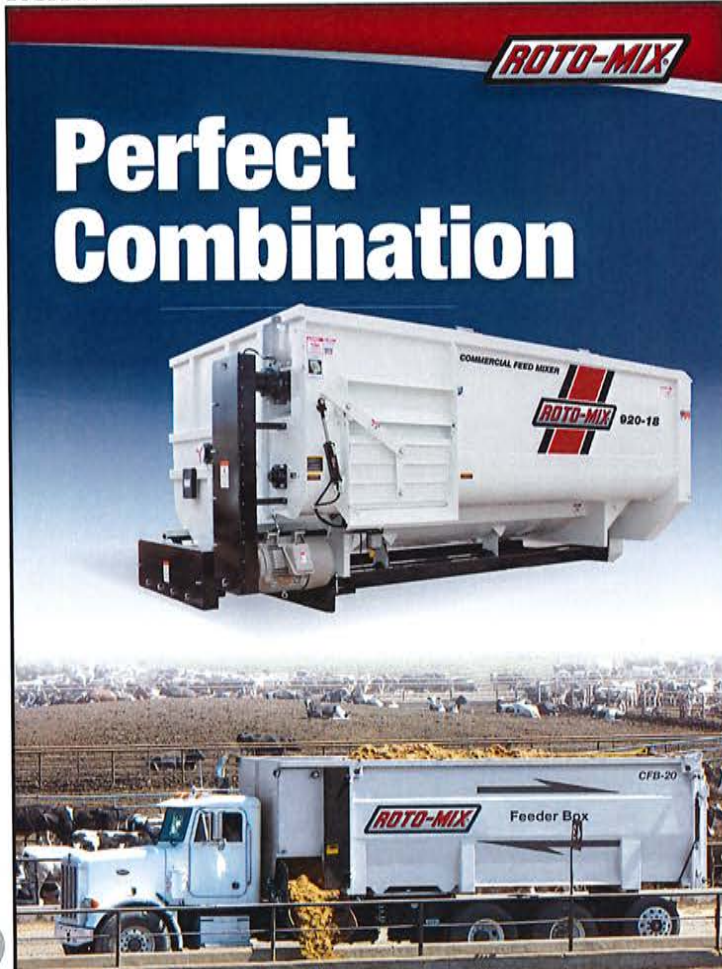
**NEW &
IMPROVED**

**THE SCIENTIFIC
HAY CONSERVATOR
BALE FEEDER**



844-304-4779

GobobCattlemen.com



Perfect Combination



CFB capacities up to 1900 cu. ft.

You'll recognize us by our look.
You'll remember us for our quality!
Smooth sided 3-panel look is a registered trademark of FSI Fabrication, LLC.

Roto-Mix Stationary Feed Mixers & Commercial Feeder Boxes

Our stationary feed mixers will mix feed rations up to 920 cu. ft for Rotary units and up to 1300 cu. ft. for Verticals. Combine the feed mixing capabilities of Roto-Mix feed mixers with the feed delivery efficiency of Roto-Mix CFB Commercial Feeder Boxes and you have the perfect combination. Blend uniform feed rations and deliver to the bunk in a short amount of time.



www.rotomix.com 620.225.1142

Negotiated Cash Slaughter Cattle

National

Period	Current	Prior Year	3yr Avg
Oct 1	124,374	103,306	91,010
Oct 8	129,613	88,352	89,821
Oct 15	103,896	111,527	107,487
Oct 22	112,772	108,552	77,809

Kansas

Period	Current	Prior Year	3yr Avg
Oct 1	19,009	16,352	16,723
Oct 8	17,079	14,958	15,540
Oct 15	18,116	18,221	17,185
Oct 22	5,330	17,057	11,344

Data Courtesy of USDA AMS



DIRKS EARTHMOVING

Scott City, Kansas

Dams ~ Site Prep ~ Land Leveling
~ Feedlot Construction ~ Terraces ~

Richard Dirks

770 W. Rd 270, Scott City, KS 67871
620-872-1793



Luco Mfg. Co.

Hydraulic Chutes ~ Working Circles
Cake Feeders ~ Continuous Fencing
Panels & Gates

See Us at www.lucoinc.com
1-888-816-6707



Offering a CHOICE of companies and risk management solutions tailored to fit YOUR needs since 1947

215 N. Main
Garden City, KS
800.633.0746



1515 E. 30th Ave.
Hutchinson, KS
800.362.2104

Hey, America! Beef-Up! No. 26

“Give Us This Day Our Daily Bread”

The Family Farmer/Rancher –

The Joy of Creativity

The Power of Ideas In Rural America

**The Economic Power of
the American System Culture**

Has Ignited A

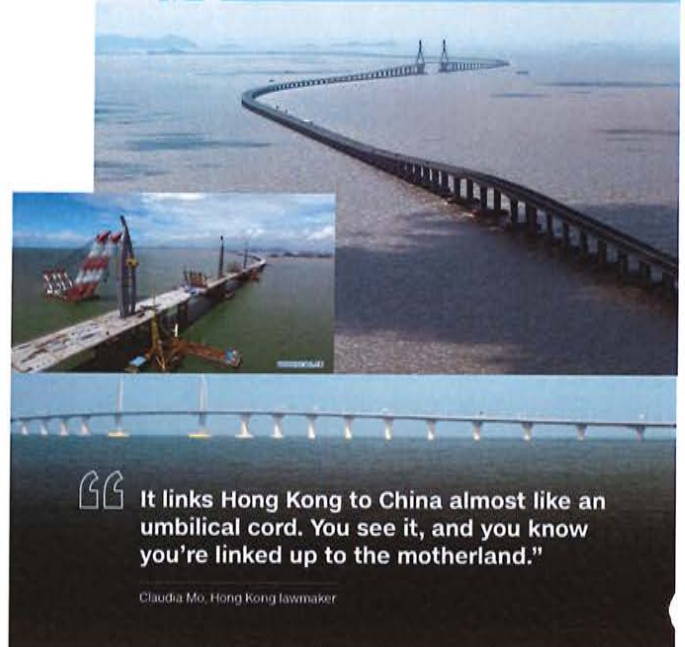
New “World-Wide” Paradigm

By Robert L. Baker

World Heads to a Breaking Point—Create a Constituency for Progress!

Oct. 23, 2018—At the time this issue of the newsletter is going to press, it is exactly two weeks before the Mid-Term elections. Whatever the outcome, will be a break-point in world affairs. Our own farm and ranch situation we already know to be in trouble from the crazy low prices, and uncertainty. Beyond that, the financial system itself, centered on Wall Street and the City of London, is about to blow out at any moment. Meantime, the geopolitical crowd associated with it—best called the “British empire”—is madly pushing international confrontation, to the point of the danger of all-out war. Then in October, these same networks went further. They announced a new world campaign—from the U.N. International Panel on Climate Change—to drastically scale back agriculture and industry, under a green fraud policy to cut carbon!

This can all seem a hopeless jumble to us, having to plant, harvest, chored, see to stock and deal with immediate reality. One quick way to put the world picture in perspective, is to realize that there are basically only two forces operating in the world today: One is the positive “New Paradigm” of the New Silk Road development policy, in which dozens of countries are collaborating with China and Russia in transportation development corridors (“Land-Bridges”) of rail and infrastructure projects (power, water, new factories and farm zones) spanning Eurasia, going into Africa, and



“It links Hong Kong to China almost like an umbilical cord. You see it, and you know you're linked up to the motherland.”

Claudia Mo, Hong Kong lawmaker

even coming to our Western Hemisphere through Central and South America. The concept is to further “win-win” trade and diplomatic relations, not harmful speculative practices and threats of war.

The other force is the negative, anti-growth “Old Paradigm” alignment associated with the monetarist system we’ve had for decades, which has fostered casino economics of speculation, debt and derivatives bubbles, unfair prices, monopolization, etc.—all serving the mega-banks and financial interests. On the diplomatic side, this Old Paradigm crowd constantly pits the U.S. and the West against Russia, China and other nations, and threatens war. This is old-fashioned, evil, dangerous geopolitics.

In the 2016 U.S. elections, voters—whatever their label, rejected this Old Paradigm. Same as voters did with Brexit in Britain to reject the European Union. Italy and Austria are also bucking Brussels. The whole world is in upheaval. This is what is driving the rethinking of NAFTA and the idea that “international trade organizations” should be able to dictated to U.S. farmers and businesses how we should price our commodities and production.

Now again, depending on the outcome of the Nov. 6 Mid-Terms, Donald Trump is either mandated to go ahead with the kinds of things he pledged in his

election campaign—jobs, Glass Steagall re-regulation of Wall Street, friendly relations with China, Russia and other powers, and an end to the constant warfare deployments; or else, there will be a helluva challenge! Either way, what should we do?

The Principle of Progress

We need to act on principle, not “politics,” and the principle required is the principle of progress. Farmbelt citizens have reason to be able to grasp this easier than others. Look at it historically.

Right in the Preamble of the Constitution, we are called to take deliberate action to serve the public good—the “general welfare.” The first Treasury Secretary, Alexander Hamilton was a genius in spelling out how to do this, with setting up a national bank, and directing plentiful credit for manufacturing, farming, transportation and other infrastructure, all of which contributed to upgrading the productivity of the nation. In the 1800s, there were surges of these policies again. For example, the leadership of President John Quincy Adams (also Congressman and Secretary of State,) which favored canals, railroads and other improvements. Under President Abraham Lincoln—during the Civil War, came the initiation of the Trans-Continental Railway, the Homestead Act, and the Land-Grant colleges (Morrill Act) for research and extension. In the 20th century, the FDR Presidency, in which Iowa’s Henry Wallace served, gave us the parity pricing principle, atomic energy development, rural electrification, great water projects—the TVA, Colorado and Columbia Rivers, the CCC program, etc. And so on.

These precedents aren’t just policy wonk examples. Look at the leaders of progress culturally. You need creativity and character. Abraham Lincoln studied Shakespeare. John Quincy Adams translated all the Psalms, and put them into rhyming poetry. FDR was an historian. In the 1800s, American farmers were known as “Latin farmers” because they were so well educated and innovative, compared to those in Europe, Asia or anywhere else in the world. They took

music to the Prairies, with pump organs in the buckboard. We can rise to the occasion now!

Constituency for Progress

We in farm country need to do our part in creating a constituency for progress. Start with the immediate economic measures. Re-instate the Glass Steagall law to restore sound banking for production, not speculation. Set up a national infrastructure bank, and issue credit through the banking system to build infrastructure projects for millions of new jobs, a million new farmers and uplifting the productive base of the nation. Reinstating the parity pricing system to agriculture, and restore production management for the national good. End the Wall Street-serving “free” (rigged) trade and speculative pricing system. Conduct national mission programs of space and fusion energy research. These elements are well worked out in what is known as the “LaRouche Four Economic Laws,” first issued in 2014, by economist statesman Lyndon H. LaRouche.

Most immediately, back the President in conducting diplomacy of friendship with the major powers—China, Russia, India, and others, to create a “New Bretton Woods” fixed exchange rate world financial system, to favor mutual development of all, not sanctions, conflict and privateer looting for Wall

Street. A symbol of what we can do in North America, is the new 34 mile multi-span bridge/tunnel, the longest sea-bridge in the world that opened in October in Hong Kong/Macau and will slash travel time from 6 hours to 30 minutes. Take the Mid-Term elections as a call to action! And, we are going to have some fun bringing agriculture and manufacturing, in the United States, back to the American System foundation stones, and know that the joy and dreams of previous ancestors are joined to the joy and dreams of future unborn families by the current families, as one of beautiful human sovereignty not contained by corporate worship of big money.

Robert L. Baker, Agricultural Research Specialist, Executive Intelligence Review, bb888k@gmail.com



From Pasture to Pennsylvania Ave, Keynote to be Provided by Robert Baker



Robert L. Baker (Bob) has been a fixture at the KCA Convention & Trade Show for many years, as well as numerous other KCA events, and a member. Having presented in the past, Bob was happy, yet anxious, to take on a keynote. We are excited he accepted the invitation, and we look forward to hearing his story and

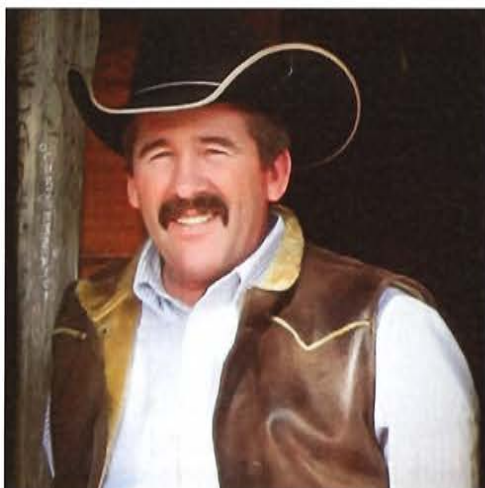
words of wisdom at the 20th Annual KCA Banquet.

Baker is an economics policy consultant, specializing in agriculture research. Over the past 30 years, Bob has been a correspondent for the Executive Intelligence Review, which has published a 70-page weekly journal for over 40 years.

Bob's mission has been to restore and promote a pricing/production policy that would perpetuate and increase the number of U.S. family farms, and provide food security. He has written many articles about the financial and political forces that have steered U.S. agriculture into the hands of global mega-monopolistic forces that are destroying the historic institution called the American family farm.

Bob received his Bachelor of Science degree from Iowa State University, and also served in the U.S. Army. Bob farmed, with his two brothers, in Keokuk County, Iowa, raising cattle, hogs, and grain. Bob contributes the 'Hey America, Beef-Up!' articles to KCA News. He speaks to agricultural groups across the country and does policy work with the international Schiller Institute in development economics. He currently resides in the Northern Virginia/Washington D.C. area with his wife, Marcia, a classical pianist and church musician.

Cattlemen's BBQ & Social to Feature Geff Dawson, Cowboy Poet & Singer

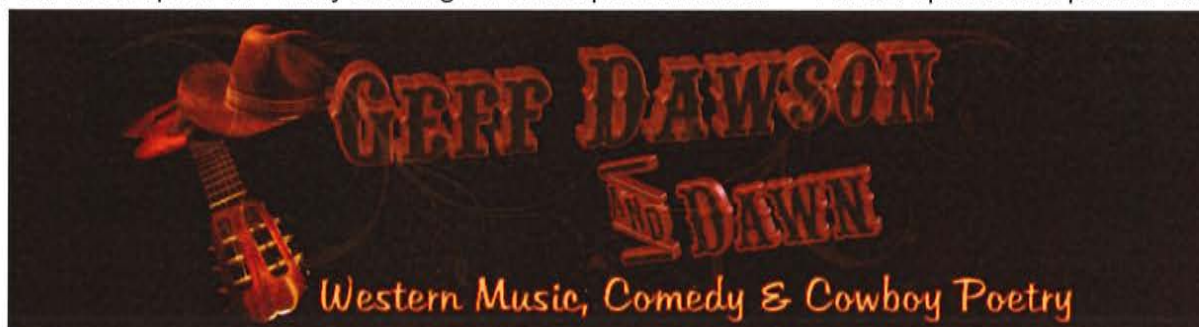


Brought to you by Rawhide Portable Corral and Eureka Livestock Sales, Geff Dawson brings to you the best of cowboy western entertainment with original western music and cowboy poetry along with his western comedy. Songs and poetry about his western way of life while working on ranches in the Kansas Flint Hills keeps you hooked to the end. Geff Dawson & Dawn will entertain with lots of laughter and fun as they bring you into their cowboy world. Geff Dawson & Dawn are truly a unique duo in western entertainment.

2012 Kansas Cowboy Hall of Fame Inductee, Dodge City, Kansas; 2009 Featured Saddle Bronc Rider on the Wild Bill Hickok Rodeo Commemorative Buckle, Abilene, Kansas; 2009 National Cowboy Poetry Rodeo 'Best of the West' and 'Shoot-Out Champion'; '2006 Western Legends Roundup 'Best of the West' Award and 'Silver Buckle Champion'; 2005 Colorado State Fair 'People's Choice Award'; 2005 Colorado State Fair

'Reserve Champion Cowboy Poet'.

Come on out at 8:00p.m. on Friday evening for Geff's performance. Free & open to the public! Cash bar.



Global Roundtable for Sustainable Beef, the WWF, & Independent Producers



Tracy Hunt is a practicing Wyoming attorney and cattle rancher. He also serves as a county commissioner in Weston County, Wyoming.

Hunt graduated from the University of Wyoming's College of Agriculture with a BS in Professional Agricultural Economics followed by Juris Doctorate from their College of Law. In 1985, he established his law practice and began cattle ranching. During his career, he also served as the Weston County Prosecuting Attorney 1986-1993, on the Wyoming Game & Fish Commission from 1994-2000 and as the Weston County Coroner from 2002-2010.

Tracy continues to practice law and run a cow/calf operation with his wife Donna and his son, Hans. Their ranch is comprised of private, public and leased land in the Black Hills of Wyoming and South Dakota. For the last five years Tracy has been engaging audiences in the ag and cattle industry with his presentation and shares his research regarding the Global Roundtable for Sustainable Beef and why and how this movement intends to assist multinational corporations in efforts to capture the live cattle supply chain away from independent cattle producers.

"The GRSB started in 2014, and is comprised of about 350 people who came together and decided they want to create what they call sustainable beef. Who are these people: Packers, restaurants, processors, retailers, associations, banks and environmental groups. Wal-Mart, McDonald's, JBS, Cargill, Allflex, Merck, Elanco, the Rainforest Alliance and the World Wildlife Foundation. No producers, and the only producer representation is the National Cattlemen's Beef Association (NCBA), who are thus far in full support of the GRSB." "We have to get together and start talking about these people and issues to ensure we are aware of what is going on," explained Hunt. Hunt speaks at 3:15p.m. on Saturday.

Health * Life * Investments * Senior Plans

Jim Phillips

"Where Service is #1 Priority"

(785) 945-3610
(800) 373-9559

(620) 727-3883 Mobile
Valley Falls, KS 66088-0160

Happy Halloween!



**AGRICULTURAL
ENGINEERING
ASSOCIATES, INC.**

John A. George, P.E.
Chief Engineer

1000 Promontory Drive P 620-756-1000
PO Box 4 C 620-704-9122
Uniontown, KS 66779 F 620-756-4600
johng@agengineering.com

MIX 30™

**THE HIGH ENERGY "ALTERNATIVE"
LIQUID FEED**

**COW-CALF
GRASS CATTLE
CALF-CREEP
GRAINS**

**STARTING CATTLE
FINISHING CATTLE
DAIRY CATTLE
MIXES**

Contact us for information, pricing, or for the location of a dealer near you.

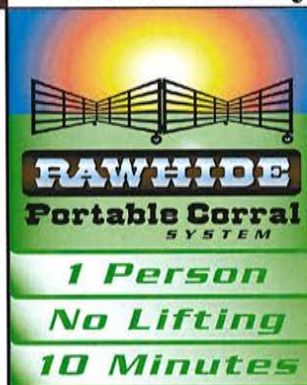
Call us Today at 800-575-7585



1374 Horned Owl Road
Horton, KS 66439
785-486-3302
Fax 785-486-3990
800-615-0299

www.natures-way.com

Dan Haverkamp
Producers of MSE
Direct Fed Microbial
for livestock



900 N. Washington St.
Abilene, KS 67410

(785) 263-3436

Fax (785) 263-3101

mary.rawhide@gmail.com

www.rawhideportablecorral.com

**Rawhide Portable Corral
& Livestock Equipment**



Kansas Cattlemen's Association
P.O. Box 1489
Junction City, KS 66441

Presorted Standard
U.S. Postage
PAID
Permit No 122
Junction City, KS 66441
Return Service Requested

-- KCA Feed Yards --

Support KCA and the Independent Producer
Contact a KCA Feed Yard today

Double B&S Cattle Co.
Mike Bartlett
Fowler, KS
(620) 885-4558

Ford County Feed Yard
Danny Herrmann
Ford, KS
(620) 369-2252

Hoxie Feed Yard
Scott Foote
Hoxie, KS
(785) 386-4519

Ottawa County Feeders
Perry Owens
Minneapolis, KS
(785) 392- 2184

Learn more about these fine KCA feed yards on the KCA website!

THIRTY **30** SERIES
HYDRABED
from
TRIPLE C
INC

TRIPLE C
SABETHA, KS
HYDRABED

TRIPLE C
SABETHA, KS
HYDRABED

TRIPLE C
SABETHA, KS
HYDRABED

VISIT OUR WEBSITE TO
FIND A DEALER NEAR YOU!

902 Highway K246 - Sabetha, KS 66534 | Toll Free: 800-530-5624 | 785-284-3674 | www.triple-c-inc.com