

KCA News

KANSAS CATTLEMEN'S ASSOCIATION

July 2018

KCA Comments on FSIS Country of Origin Labeling Docket Petition

KCA recently commented in support for change to the food safety and inspection services standards and labeling policy book on "Product of U.S.A."

The balance of regulatory oversight and pressure to meet market demands is often viewed as a constant swinging pendulum in the beef industry. Anytime imports arrive into the United States, the inspection and labeling of those meat products is integral to ensure food safety standards and consumer health and interest. Food Safety Inspection Service (FSIS) is authorized by the Federal Meat Inspection Act (FMIA) with the regulatory oversight that imported meats be held to the same standards as production within the United States. The act seeks to ensure, not only, the safety and quality of the meat, but also, account for the accurate labeling of origin in order to provide the proper scope of awareness for consumers at the product point of sale.

The reciprocity regulation FSIS, FDA and FMIA have in place on meat inspection, application of medicine(s) on animals prior to slaughter, and the concise language and demands upon US exported meats to foreign countries trigger further consideration. The USA demands reciprocity of standards for imported meats when foreign countries place restrictions and bans on specific medicines, vaccines, and inspection of U.S. exported meats. The notable definition of using scientifically-based, measurable standards and random sampling is imperative and necessary to ensure sufficient inspection and labeling of meat imports.

The drive and desire of consumers to know where their meat comes from exists for numerous reasons, including: health, safety, and quality. FSIS must ensure accurate labeling of origin and inspection standards. Furthermore, the inspection and labeling process should be constantly reviewed and held to stringent standards to solidify the integrity of the labels. Reports in recent years of corruption among foreign governments and meat import and export inspection officials raised red flags in the U.S. Proper oversight and science-based standards must be enforced if COOL is to be taken seriously by, not only, U.S. consumers, but international consumers as well.

While consumers and U.S. cattle producers seek to bring COOL to higher ground by demanding more structured standards and practices of labeling and inspection, FSIS, FDA and FMIA must in turn continue to bring forward an improved system of regulatory oversight with consistent measures of science-based import safety and transparency in Country of Origin Labeling.

A prime example is foreign government corruption. The Brazilian meat inspection case revealed authorities failed to establish procedures to prevent conflict of interest between inspectors and meat plants. Sanitation requirements in plants were inadequate which led to product contamination as well as inadequate post-mortem inspection procedures. The audit further revealed failure to meet FSIS requirements to ensure only "wholesome carcasses, free of contamination and defects" receive the mark of inspection. Further audit revelations uncovered a trend of abnormal container violations at U.S. point of entry. The abnormal container violation is a clear failure of random sampling on imports and scientific testing conducted on the samplings. With these egregious violations of FSIS policy and regulation, ensuring science-based standards and health requirements are met by foreign import countries of origin is more important than ever.

KCA supports the conclusion of the petitioners that the current FSIS policy which allows foreign imported meat and meat products to be brought into the U.S., processed through a USDA inspected plant and labeled "Product of USA" is counter to the legal authority granted to FSIS in federal law and by its own regulations. The current policy is having the very adverse outcomes on farmers and consumers that Congress specifically stated were the outcomes it intended to prevent when enacting the FMIA. Based on the law and the evidence set out above, we respectfully request FSIS change its policy on labeling "Product of USA" as it is set out in the FSIS Policy Book to that recommended in this petition.

KCA urges everyone to comment in support of the petition at <https://www.regulations.gov/docket?D=FSIS-2018-0024>.

Board of Directors

Shawn Mills
President

Grenola, KS
(620)205-8100

shawntmills@gmail.com

Perry Owens
Vice President

(785)392-2184

Minneapolis, KS
ocfi@nckcn.com

Greg Davis
Sec./Treasurer

Madison, KS
(620)340-9534

ranchlandfeeds@gmail.com

Dave Murphy
Emporia, KS

(620)481-9607

davemurphy1720@gmail.com

Tony Anderson
Farlington, KS

(620)362-3238

tylertammytony@gmail.com

Pete Fish
Cosby, MO

(816)289-6168

prfish728@gmail.com

Nicole Pfrang
Goff, KS

(785)285-1066

nicpfrang@gmail.com

Andy Miller
Fall River, KS

(620)289-6168

andymiller2004@gmail.com

Contact KCA

725 N. Washington St.

Junction City, KS 66441

Phone 785-238-1483

Fax 785-238-1518

kansascattlemen.com

cowsrus@kansascattlemen.com



110060188216



@kansascattlemen

HONORABLE MENTION:

Woodson County Fair Premium Sale

The Kansas Cattlemen's Association in conjunction with members DJ Edwards, Lee Robbins, John Petty, Michael Old, and Bill Ireland, purchased Dalton Brittan's beef premium in support of future 4-H projects and education at the 2018 Woodson County Fair 4-H livestock auction. During the auction, buyers pay premiums for animals as recognition for the effort the youth put into their livestock projects.

The exhibitors get to keep their animals and the money from the premium sale. Each 4-H'er is allowed to pick animals to lead through the show ring. Thank you to the mem-

bers across the state for supporting your local 4-H chapters and participants. Congratulations to 4-H'ers for all of your Fair success in 2018!



KCA Convention Opportunities

The 20th Annual Kansas Cattlemen's Association Convention and Trade Show will take place on November 9th & 10th, 2018 at the Meridian Center in Newton, Kansas. KCA is putting together an event where today's ranching and agriculture communities can come together with the state's agri-business leaders for educational seminars, industry updates, and policy meetings.

Exhibitors: Due to the limited space of our venue, it is important to reserve exhibitor space early. Only select locations in the building have power, so if you require an outlet, reserve your space now! We are unable to hold booth space without a signed contract and payment. All spaces will be assigned on a first-come, first-served basis. Exhibitor information, including move-in, move-out, and other details will be sent by October 15, 2018. Outdoor space will be available for displaying equipment and machinery that cannot come into the building.

Sponsors: Promoting your products and services through the sponsorship program or benefit auction is simple and effective. Interested sponsors should contact us early for guaranteed inclusion in all provided marketing opportunities!

Contact Jodie McNutt at 785-238-1483 or visit www.kansascattlemen.com for additional details or to customize a plan that best suits your business needs.

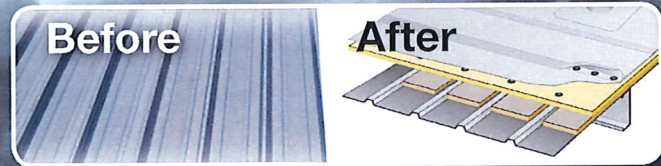


WATER TIGHT
ROOFING

COOLER COWS ARE HAPPIER COWS!

Elastomeric Coating

Single Ply Membrane



Claus Dairy Farm Dalhart



Centramatic

**No tear off and no disruption
to your production.**



"This was a very clean operation. It didn't cost more or take longer. They did exactly what they said they would do."

Dyke Rogers
Owner - CDFD



Serving Kansas, Texas, and Oklahoma



"WaterTight's commitment to excellence is just that - WaterTight!"

Larry Easley
Storage Management Associates, Inc
TSSA Board of Directors 2012-2015

888-809-9976
www.watertightroofinginc.com



Message from the President.....Shawn Mills

County Fairs are wrapping up across the state. I am always so proud of the hard work the kids put into their livestock and projects. Congratulations to everyone that participated in their fair, and thank you to everyone that supports their local premium auctions. Be sure to make plans to attend the Kansas State Fair in September and go view the exhibits.

to endorse candidates, believing the members should choose to vote for whom they feel best represents your interests. The most important thing you can do is get out and vote.



It seems as if we will begin seeing some results out of the Trump Administration's trade negotiations. It is easy to focus on the short-term, but these negotiations are what we need to see long-term gains for U.S. producers. We hope to find fair and balanced trade deals when the ink dries.

If you have not yet done so, mark your calendar and plan to attend the KCA Convention November 9th and 10th. Presentations include topics related to all aspects of the industry from animal health to the Round-table for Sustainable Beef. We will also be committing quite a bit of time to policy review. Trust me, you will be amazed how much is going on, and the impressive range that KCA is covering for the independent cattle producer.

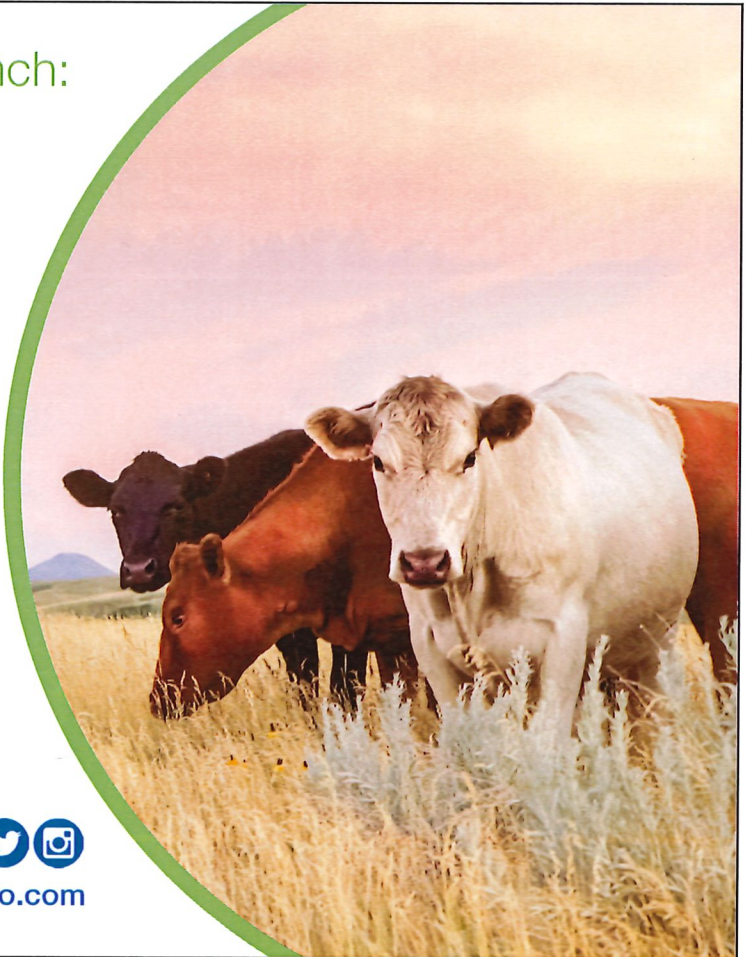
Election season is in full swing with the primary election quickly approaching. KCA has received numerous requests from candidates for endorsements. We seriously considered each request and have made the decision to abstain from any endorsements at this time. Historically, KCA has been apprehensive

Until Next Time,
Shawn Mills

You value two things on your ranch: time and money.

At State Auto, we make it easy to get the right coverages at a competitive price. We have over 80 years of farm and ranch expertise. Your time is important and we know that. As a Kansas Cattlemen's Association member, you'll get exclusive benefits such as specialized coverages, competitive pricing and dividend potential.

Protect what matters most... your family and your farm. Our agents are your friends and neighbors, they get to know you and your ranch. To find a local agent, visit StateAuto.com/FindAnAgent.



USDA Assists Farmers Impacted by Unjustified Retaliation

U.S. Secretary of Agriculture Sonny Perdue announced that the U.S. Department of Agriculture (USDA) will take several actions to assist farmers in response to trade damage from unjustified retaliation. President Trump directed Secretary Perdue to craft a short-term relief strategy to protect agricultural producers while the Administration works on free, fair, and reciprocal trade deals to open more markets in the long run to help American farmers compete globally. Specifically, USDA will authorize up to \$12 billion in programs, which is in line with the estimated \$11 billion impact of the unjustified retaliatory tariffs on U.S. agricultural goods. These programs will assist agricultural producers to meet the costs of disrupted markets.

“This is a short-term solution to allow President Trump time to work on long-term trade deals to benefit agriculture and the entire U.S. economy,” Secretary Perdue said. “The President promised to have the back of every American farmer and rancher, and he knows the importance of keeping our rural economy strong. Unfortunately, America’s hard-working agricultural producers have been treated unfairly by China’s illegal trading practices and have taken a disproportionate hit when it comes illegal retaliatory tariffs. USDA will not stand by while our hard-working agricultural producers bear the brunt of unfriendly tariffs enacted by foreign nations. The programs we are announcing today help ensure our nation’s agriculture continues to feed the world and innovate to meet the demand.”

Background: Of the total unjustified retaliatory tariffs imposed on the United States, a disproportionate amount was targeted directly at American farmers. Trade damage from such retaliation has impacted a host of U.S. commodities, including field crops like soybeans and sorghum, livestock products like milk and pork, and many fruits, nuts, and other specialty crops. High tariffs disrupt normal marketing patterns, affecting prices and raising costs by forcing commodities to find new markets. Additionally, there is evidence that American goods

shipped overseas are being slowed from reaching market by unusually strict or cumbersome entry procedures, which can affect the quality and marketability of perishable crops. This can boost marketing costs and discount our prices, and adversely affect our producers. USDA will use the following programs to assist farmers:

- The **Market Facilitation Program**, authorized under The Commodity Credit Corporation (CCC) Charter Act and administered by Farm Service Agency (FSA), will provide payments incrementally to producers of soybeans, sorghum, corn, wheat, cotton, dairy, and hogs. This support will help farmers manage disrupted markets, deal with surplus commodities, and expand and develop new markets at home and abroad.

- Additionally, USDA will use CCC Charter Act and other authorities to implement a **Food Purchase and Distribution Program** through the Agricultural Marketing Service to purchase unexpected surplus of affected commodities such as fruits, nuts, rice, legumes, beef, pork and milk for distribution to food banks and other nutrition programs.

- Finally, the CCC will use its Charter Act authority for a **Trade Promotion Program** administered by the Foreign Agriculture Service (FAS) in conjunction with the private sector to assist in developing new export markets for our farm products.

The best kept secret in the feed business!

...has reduced pulls and death loss by more than 50% and also reduced antibiotic costs by more than 75%...

Make an impact on your operation.

IMPACT+DRENCH

PROBIOTIC / ENZYME / NUTRITIONAL DRENCH

Steve Garton - 620- 664-0252 Derrick England - 785-263-6488

Hey America! Beef Up!

No. 23

Solve Trade Chaos with New Paradigm For Win-Win Expanded Production. Keep Producers in Business

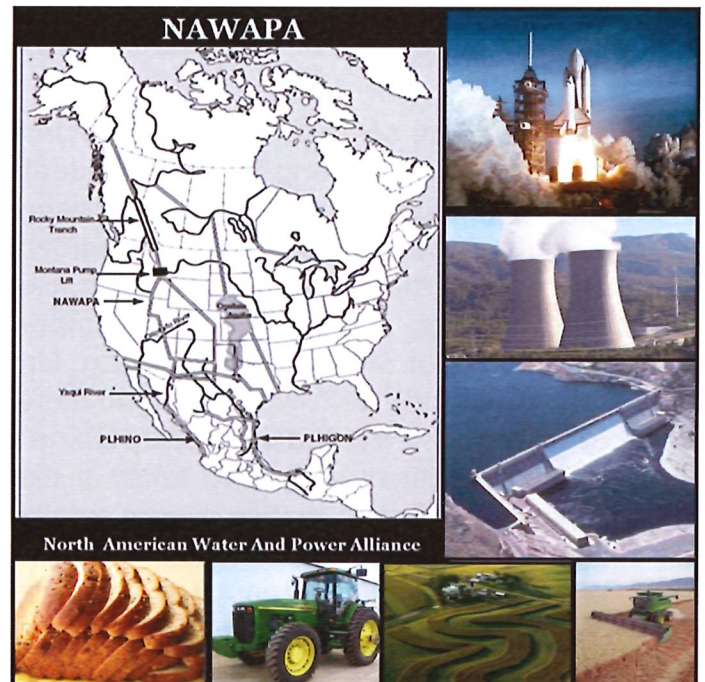
By Robert L. Baker

– As world trade is now the hot issue in the news, it is important to not lose sight of the big picture. President Trump has called the question on ending legacy trade patterns not in the common interest of trade partners, only of the Wall Street interests that foisted them onto many nations in the first place. But using tariffs as a weapon is creating chaos. There is a way to get above this, and take actions for both domestic economy-building and win-win trade. But first, appreciate the context in which the trade “issue” has arisen.

Two philosophies of economics are butting heads like two mad rams or, in this case, like two giant bulldozers. Parts of humanity, on a world scale, are scrambling to throw off trade and economic policies that have looted populations of their production, and imposed warfare and speculative practices undermining skilled farmers and productive workers. The bulldozer of physical production, which we need, is set against the bulldozer of Wall Street mega-speculation. Getting slammed in the fray is one of the most powerfully productive machines in human history called, Modern American Agriculture.

Today’s livestock and grain producers represent a beautiful merger of modern space science and technology with millions of creative man-hours of applied genetics, fertility and biological research that is, through, today’s modern farming practices, providing abundant food, like the Preamble declared, “for ourselves and our posterity.”

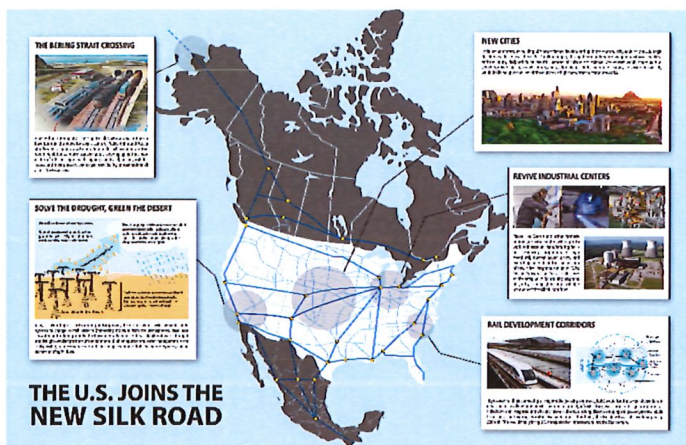
The trade “problem” is an overall policy problem, because Government policy has been directed, for too long a period, to support and protect speculation. The speculation leads to monopolies. These monopolies loot



the labor of the owner operator producers until the producers become employees of mega firms and are forced to accept lower and lower real wages and living standards. This looting process is camouflaged in a discussion lingo called “the market place,” which provides a cover for, in effect, rigged prices through a jungle maze of marketing instruments that cover for speculation and monopolization. Thus, the two bulldozers—productivity vs. looting-- are banging into each other and the philosophy of the right to produce for “ourselves and our posterity” is at stake. We fought the American Revolution for this principle.

How does the battle manifest itself? Well...”Trade War.” Let’s look into this on a world scale, then come back to the local battle.

In the 1930s, FDR’s administration implemented parity pricing law for U.S. farmers. In the 1940’s, under



FDR's guidance, the value of the U.S. dollar was fixed and Wall St./London speculators couldn't drive the dollar's value up or down. With a solid currency value, parity prices and low interest rates, U.S. agriculture grew and excelled. Government-directed; low-interest credit stimulated massive infrastructure. Look at Eisenhower's Atoms for Peace and interstate highways, Kennedy's space program and massive water systems, terracing, etc. But the bulldozer of money changers, speculation and monopolies rammed their blade into America's domestic and worldwide post-WWII economic production revolution.

Starting in the 1960's, Jack Kennedy was shot, Johnson expanded the war in Vietnam, Nixon cancelled our fixed dollar exchange rate policy, oil prices sky-rocketed, and the Reagan/Volker 20% interest rates crashed our agro-industrial economy. We went from a space science driven, low-interest, solid dollar, growing economy, to a war driven, monopoly-oriented system, with low wages and 'magic of the market place' free trade speculation. The entire American System of privately owned farms, factories and skilled labor was pushed off the road by the bulldozer of speculation.

Next came one multi-national "free trade" concoction after another. NAFTA, GATT, WTO, EU--all came into being, Shifting policy from promoting high scientific physical production, to a casino of speculation in, literally, thousands of different Wall Street financial instruments, hedges, puts, calls, CDO's and trillions of dollars of toxic derivatives speculation of all kinds. There is today a worse overhang of this toxic "non-productive" speculative waste than what triggered the 2008 crisis. Coupled with the-Thousand-Pound-Flea-on-a-Thirty-Pound-Dog corporate looting of hundreds of off-shore tax havens, the citizen producers cannot fight monopolies.

New Paradigm: Win Win Economics

Now, the wake-up phase has arrived. Italian, British and other everyday people in the EU are saying no to the old paradigm of looting. In the Americas, U.S. voters want to restore the economy. We can shift course on to a policy favoring production, not looting.

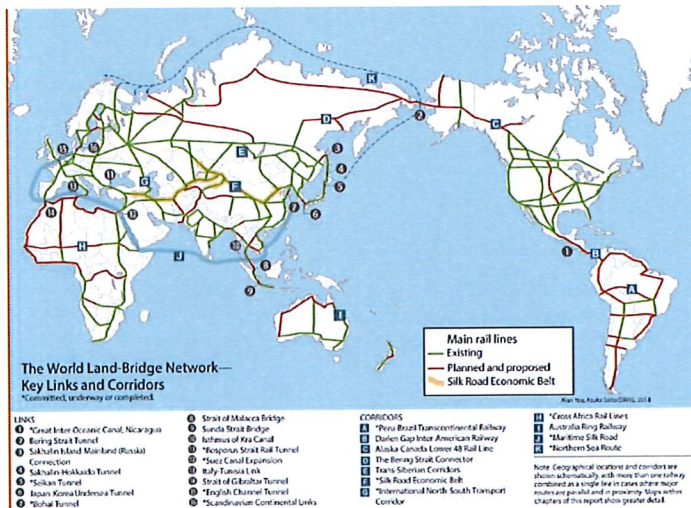
I attended an international conference in Germany June 30-July1 where this was discussed. The European farmers present reported the same picture we have here, impossible prices, the necessity for off-farm income, young people leaving, less and less good farm labor etc. The conference was titled, "The Urgent Need in International Relations: A Peace



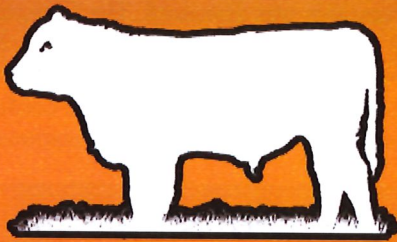
Order Based on the Development of Nations," sponsored by the Schiller Institute. Participants of all backgrounds (from diplomats, to engineers, to farmers, and lawmakers) discussed revving up production in East Europe, new projects for Africa, and the cultural guts and optimism to go with it. There are plans for new water and rail projects, ports, nuclear power and much more. This is reality. It comes under the perspective of what is called the "New Silk Road" idea, proposed five years ago by China, which now is underway in Eurasia, Africa and beginning in South America. We need to get on board.

What must we do? We need stable fixed currency values and prices worldwide—a "New Bretton Woods"—to favor long-term infrastructure and agro-industrial advances. Domestically, our nation (and others) needs a sound banking system in which commercial banking is fostered, and speculative finance is on its own (reinstate the Glass Steagall law.) We need a national bank for infrastructure and other priority projects; and massive credit extension to rev up all sectors; and most importantly, a push for front-end science in space and fusion energy. We need immediate aid to our farm sectors in crisis, with floor prices based on parity; plus anti-trust enforcement and an end to the commodities speculation casino. In this context, we can set trade deals that are mutually beneficial to the trading partners, not based on cheapening labor at either end. We can work together to "un-wind" the bad trade deals, and forge new, beneficial deals. (The tit-for-tat tariff fight is hopeless).

How can this be? The new paradigm of win-win economics can come into being in the same spirit as the example of the Singapore Summit, where, for decades, such a positive development was considered unthinkable. There is a new potential geometry of powers—China, the United States, Russia and India, which can lead the way to a future based on the New Paradigm of the Silk Road, for international collaboration for real development. That's the fight now.



*By Robert L. Baker, Agricultural Research Specialist,
Executive Intelligence Review,
bb888k@gmail.com*



GOBOB PIPE & STEEL

HAY TRAILERS FOR EVERY NEED!



**ECONOMY
HIGH CAPACITY
SELF UNLOADING**



866-531-8472 GobobCattleman.com

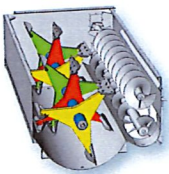
ROTO-MIX

Blend Uniform Rations No One Does it Better.

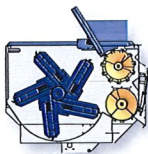
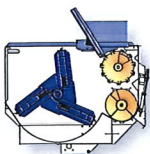


Find the Right Feed Mixer.

Our rotary feed mixers are available with a choice of rotor styles to better mix your specific kind of rations. Commercial series mixers are available in 540 to 920 cu ft. truck, trailer and stationary models.



Staggered Rotor Option GeneRation II is ideal for feeding rations that require wet distillers grains.



3, 5 and 6-Bar Options Rotary Mixer allows more leaves and particle length during mixing with hay.



ROTO-MIX

www.rotomix.com 620.225.1142



SWIHART
Sales Company
- Mist Sprayers -

Excellent for spraying cattle, nurseries, vegetables, vineyards, orchards, Christmas Trees, livestock, mosquitos, chicken houses, etc.
American Made

SPRAY INNOVATIONS



References available in your area

Low Maintenance • High Performance • FREE Shipping

S.I. Feeders

Swihart Sales Company
7240 County Road AA, Quinter, KS



785-754-3513 or 800-864-4595
www.swihart-sales.com



THE BEST BULLS CAN'T TIP THIS...

The Double D Covered Mineral Feeder withstands the most ornery bull and the roughest weather.

Order one today for only \$150.00.

please contact us **DOUBLE D**
FAMILY MAT SHOP, INC.

p. 1.888.377.2879

w. DoubleDMats.com



Health * Life * Investments * Senior Plans

Jim Phillips

"Where Service is #1 Priority"

(785) 945-3610
(800) 373-9559

(620) 727-3883 Mobile
Valley Falls, KS 66088-0160

20th Annual KCA Convention and Trade Show Schedule Planning in Progress

The 20th Annual KCA Convention and Trade Show will take place on November 9th and 10th in Newton, Kansas at the Meridian Center. We have a great line-up of speakers scheduled, delicious meals picked out, incredible entertainment, and much more.

The convention will kick off on Friday, November 9, 2018 with committee meetings. During this time, members will be able to work through resolutions and draft proposed modifications to current policy or write new resolutions for introduction during the annual membership meeting that afternoon.

The Trade Show will open at 12:00pm. Following the committee meetings, Kendal Lothman, the Kansas Brand Inspector will speak as well as Dr. Coover with SEK Genetics. The annual membership meeting will take place at 4:30pm. Friday evening entertainment will be provided by Cowboy Poet and Western Signer, Geff Dawson, as part



of the KCA BBQ and Friday evening social functions.

Saturday is full of excellent presentations including soil conservation, the Schwieterman, Inc. Market update, and a discussion on the Global RoundTable for Sustainable Beef with Tracy Hunt. The evening will include the annual benefit auction and KCA Banquet.

The KCA Convention and Trade Show is always open to the public. There is no charge to attend the presentations or the trade show, however there are charges for any meals. Meals will include the luncheon chicken

fried steak and the dinner filet mignon. Registration received prior to October 15, 2018 will receive a 25% discount. Registration cards will be mailed to all active members. You may also register online at www.kansascattlemen.com/shop or by calling the KCA offices at 785-238-1483.

CIA COPELAND INSURANCE AGENCY

**MANHATTAN - ABILENE - JUNCTION CITY - KANSAS CITY
MARYSVILLE - RILEY - SALINA - TOPEKA - WAMEGO
WE ARE A STATE AUTO LICENSED AGENCY
SERVICING ALL OF KANSAS**

**OUR AGENCY CREATED THE FARM DIVIDEND PROGRAM WITH
YOUR NEEDS IN MIND**

CONTACT US TODAY AND SEE IF STATE AUTO IS A GOOD FIT FOR YOUR OPERATION



JAY COPELAND
785-410-5509



LANCE SHARP
785-656-2686



LINDEN STUEVE
620-794-8359



MIKE SPOHN
785-210-6155

**Specializing in innovative risk management strategies for farmers and
commercial agriculture!**

www.copelandins.com

Schedule of Events

- August 7** Primary Election
- November 6** General Election
- November 9** KCA Annual Membership Meeting
- November 9-10** KCA Annual Convention



Luco Mfg. Co.
 Hydraulic Chutes ~ Working Circles
 Cake Feeders ~ Continuous Fencing
 Panels & Gates
 See Us at www.lucoinc.com
 1-888-816-6707




Offering a CHOICE of companies and risk management solutions tailored to fit YOUR needs since 1947

215 N. Main
 Garden City, KS
 800.633.0746

KFSA
 AGENCY
 More Than Just Insurance!

1515 E. 30th Ave.
 Hutchinson, KS
 800.362.2104



AGRICULTURAL ENGINEERING ASSOCIATES, INC.

John A. George, P.E.
 Chief Engineer

1000 Promontory Drive P 620-756-1000
 PO Box 4 C 620-704-9122
 Uniontown, KS 66779 F 620-756-4600
johng@agengineering.com




1374 Horned Owl Road
 Horton, KS 66439
 785-486-3302
 Fax 785-486-3990
 800-615-0299
www.natures-way.com

Dan Haverkamp
 Producers of MSE
 Direct Fed Microbial
 for livestock

Thank you for your Membership

- | | |
|-----------------------------|------------------------|
| Glen Lieser | Steven Hamlin |
| Kurt Herrel | Ronny Grossnickle |
| Christopher & Andrea Dietel | Gary Barker |
| Doug Koch | Joe Fenske |
| Sam Roberts | Ralph Dick |
| Bill Hansen | Ted Birtell |
| Arnold Hildebrand | Michael Toner |
| Rolan Leniton | Adam & Andrea Arbuckle |
| Randy Davis | Dayle Heft |
| Robert Walker | Kylee Polok |
| Steve Atkins | Morgan Scheffler |
| J.M. Swart | Shawn Mills |
| Ronnie Rogers | Charles Jordan |
| Ross Ardery | Kelly & Amy Jarboe |
| Greg Schultejas | Mark Larson |
| Edwin Lenkner | David Nicholas |
| Lavern Potuzak | Jimmy Horton |
| Kyle Bretton | Marlin Kocher |



DIRKS EARTHMOVING
 Scott City, Kansas
 Dams ~ Site Prep ~ Land Leveling
 ~ Feedlot Construction ~ Terraces ~

Richard Dirks
 770 W. Rd 270, Scott City, KS 67871
 620-872-1793

MIX 30™
 THE HIGH ENERGY "ALTERNATIVE"
 LIQUID FEED

COW-CALF	STARTING CATTLE
GRASS CATTLE	FINISHING CATTLE
CALF-CREEP	DAIRY CATTLE
GRAINS	MIXES

Contact us for information, pricing, or for the location of a dealer near you.

Call us Today at 800-575-7585



900 N. Washington St.
 Abilene, KS 67410

(785) 263-3436
 Fax (785) 263-3101
mary.rawhide@gmail.com
www.rawhideportablecorral.com

Rawhide Portable Corral & Livestock Equipment

**1 Person
 No Lifting
 10 Minutes**



Kansas Cattlemen's Association
725 N. Washington St. Ste. B
Junction City, KS 66441

Presorted Standard
U.S. Postage
PAID
Permit No 122
Junction City, KS 66441
Return Service Requested

-- KCA Feed Yards --

Support KCA and the Independent Producer
Contact a KCA Feed Yard today

Double B&S Cattle Co.
Mike Bartlett
Fowler, KS
(620) 885-4558

Ford County Feed Yard
Danny Herrmann
Ford, KS
(620) 369-2252

Hoxie Feed Yard
Scott Foote
Hoxie, KS
(785) 386-4519

Ottawa County Feeders
Perry Owens
Minneapolis, KS
(785) 392- 2184

Learn more about these fine KCA feed yards on the KCA website!

THIRTY **30** SERIES
HYDRABED
from
TRIPLE C
INC

TRIPLE C
SABETHA, KS
HYDRABED

TRIPLE C
SABETHA, KS
HYDRABED

TRIPLE C
SABETHA, KS
HYDRABED

VISIT OUR WEBSITE TO
FIND A DEALER NEAR YOU!

902 Highway K246 - Sabetha, KS 66534 | Toll Free: 800-530-5624 | 785-284-3674 | www.triple-c-inc.com