

KCA News

KANSAS CATTLEMEN'S ASSOCIATION

August 2018

KCA Raises Questions for Proposed Cattle Trace Program Beginning Soon

The Cattle Trace program project is slated to begin Fall 2018. This collaborative effort is comprised of the Kansas Department of Agriculture, USDA, Kansas State University Beef Cattle Institute, Kansas Livestock Association and individual producer stakeholders. KCA continues to support traceability programs, and their development, but maintains a policy that these programs remain voluntary to producers.

The project's aim is to design, research and effectively store results and inevitably implement a national ID and traceability system. This is just one project among many in the national movement toward mandatory traceability. NCBA developed their own Beef Industry Long Range Plan which debuted January 2018. A caveat of NCBA's plan is the desire for a feasibility study to determine appropriate development of a national ID and traceability system.

While vulnerabilities within the framework, integrity and potential government distribution and access of accumulated and stored data derived from such projects has been an ongoing concern, Mary Soukup, assistant secretary for the Kansas Department of Agriculture assured the Cattle Trace project group is working to "design a system to be privately held and only available to government in the event of a disease outbreak." It remains to be seen, the impact such projects will ultimately have on state and national record-keeping standards and animal health transparency standards across the industry.

The project outlined a test group of approximately 55,000 cattle. The test group would trace from farm to feedlot and through slaughter while implementing mock disease events to test the logistical structure of the system. While projects in the past have tested other equipment required in a traceability program, the Cattle Trace project began at the top, organizationally, and gathered support from three major packers. They are in the process of setting up 10-15 feed yards, a handful of sale barns and then will utilize farm and ranch level producers in an effort to augment and round out the 55,000 head test group of cattle.

There are several key concerns regarding the Cattle Trace project. The first being the collection and storage of accumulated project results allegedly to be held by a "privately held" third party. The question begs to be asked, who is the private party slated to hold such

information and how can producers and industry alike ensure said information will not be passed on to government agencies and private entities such as packers? If there were to be a transparency, in good-faith, and mandated by the government, what effect would the project results have on the industry, and more importantly, independent producers? These questions raise important marketing and production strategy implications for large and small independent producers alike.

In addition, the use of animal tracer tags have been designed to utilize UHF (Ultra High-Frequency) or LF (Low-frequency) technology. This allows communication between the EID animal tags and the hand-held wands and gate readers. There is an on-going and overlooked group of researchers who have been testing and compiling data for over two decades on the impact of EMF (Electromagnetic Frequency) on bovine and other mammal groups, more specifically humans. While there are documented and verifiable results for the effects of EMF on humans and bovine alike, the test studies on bovine are cause for concern when gauging the efficacy of conceptualizing mass application of EID tags.

EID tags require either UHF or low-frequency depending on the tag system being used. Cows are sensitive to the Earth's magnetic field. Bovine magneto-reception can be influenced by external EMF, example: power-lines and cell towers. Cattle are sensitive to Earth currents (stray voltage) associated with transients in particular harmonics. Milk production, health, and behavior seem to be negatively affected. Bovine responses to radio-frequency (RF) exposure include avoidance behavior, reduced ruminating time, and alterations in oxidative stress. These findings indicate possible adverse health effects. Overall, cattle seem to be affected by environmental EMF exposure. Cows align to geomagnetic field lines and are influenced by ELF and EMF.

If mandated cattle trace programs are implemented industry-wide, what would the effects of ELF and EMF have on both the human and bovine populations? What safety measures would need to be implemented to protect both species, and at what cost? Independent producers could potentially be forced to meet mandates and in turn may not be able to sustain the financial investment and on-going maintenance and upgrades as the industry continues to utilize the newest technology available.

Continued Page 2

Board of Directors

Shawn Mills
President

Grenola, KS
(620)205-8100

shawntmills@gmail.com

Perry Owens
Vice President

(785)392-2184
Minneapolis, KS

ocfi@nckcn.com

Greg Davis
Sec./Treasurer

Madison, KS
(620)340-9534

ranchlandfeeds@gmail.com

Dave Murphy
Emporia, KS

(620)481-9607

davemurphy1720@gmail.com

Tony Anderson
Farlington, KS

(620)724-2860

tylertammytony@gmail.com

Pete Fish
Cosby, MO

(816)289-6168

prfish728@gmail.com

Nicole Pfrang
Goff, KS

(785)285-1066

nicpfrang@gmail.com

Andy Miller
Fall River, KS

(620)289-6168

andymiller2004@gmail.com

Contact KCA

PO Box 1489

Junction City, KS 66441

Phone 785-238-1483

Fax 785-238-1518

www.kansascattlemen.com

cowsrus@kansascattlemen.com



110060188216



@kansascattlemen

COOL Comment Period Extended by USDA, Time Left

An FSIS petition regarding COOL, requests the Food Safety and Inspection Service change policy to ensure only U.S. domestic meat products can be labeled "Product of the USA."

The original deadline for comments was Aug. 17, and the agency has received nearly 2,000 — mostly supportive of the change. On Monday, FSIS extended the comment period to Sept. 17.

An FSIS spokesman told Capital Press in an email the deadline was extended due to significant interest from stakeholders.

In their petition, AGA and OCM said current FSIS policy allows foreign meat and meat products that passes through a USDA-inspected plant to be labeled Product of USA.

FSIS policy states that meat can be labeled Product of USA "if the product is processed in the U.S." The petitioners want that changed to "if it can be determined that significant ingredients having a bearing on consumer preference, such as meat, vegetables, fruits, dairy products, etc., are of domestic origin (minor ingredients such as spices and flavorings are not included)."

The petition states that FSIS regulations and the Federal Meat Inspection Act clearly establish that meat product labels must not mislead the consumer or be false, and Congress has given similar protection authority to the Federal Trade Commission, the U.S. Customs Border Protection and the Food and Drug Administration, the pe-

tioners said.

"Through legislative action, Congress has consistently established the law on labeling. Labels must not be misleading, false or misbranded. Domestic origin is one of the attributes of the product that must be truthful," the petition states. In enacting the Federal Meat Inspection Act, Congress fully recognized misbranding not only impacts consumers and processors but can result in "sundry losses to livestock producers," the petitioners said.

"Research consistently demonstrates that consumers support knowing the origin of their food and it clearly indicates that U.S. farmers and ranchers can benefit from this consumer preference," the petition states. Allowing foreign meat and meat products to bear the Product of USA label denies U.S. cattle producers that market opportunity and denies consumers the transparency they are entitled to under the law, the petitioners said.

The top four meatpackers control more than 80 percent of the U.S. beef market. They market globally and often own their own cattle or through contracts control cattle around the world, they said. "These corporations can simply import cheaper foreign beef, pass it through a USDA-inspected plant or blend it with U.S. beef and gain the increased market value that can be attributed to 'Product of USA.'"

KCA has commented in support of the petition. To comment or to view the petition and comments, visit: <https://www.regulations.gov/docket?D=FSIS-2018-0024>

Cattle Trace Test, Continued from Page 1

Cattle Trace expects to have enough testing and data collection completed by late summer 2019 to include an economic analysis. But many questions remain. Who will retain the information, how can they ensure the data will not be released to government agencies without due cause? How safe is the program in terms of health for both bovine and humans? How safe is the data from data miners and hackers?

The project is slated to last two years. The answers to said questions and

the many others that need clarification may not be resolved in any specific time. However, independent producers and industry must maintain thoughtful consideration to all of the potential issues, any adopted system must be presented in a transparent nature.

Kansas Cattlemen's Association is tracking the development of the Cattle Trace program and maintaining communication with development participants in order to gain clarifications to concerns during the process.

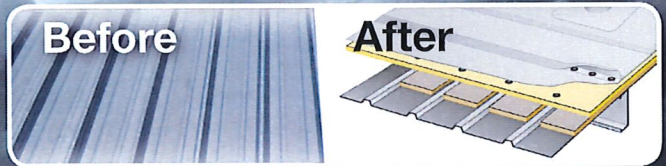


WATER TIGHT ROOFING

COOLER COWS ARE HAPPIER COWS!

Elastomeric Coating

Single Ply Membrane



Claus Dairy Farm Dalhart



Centramatic

**No tear off and no disruption
to your production.**



"This was a very clean operation. It didn't cost more or take longer. They did exactly what they said they would do."

Dyke Rogers
Owner - CDFD



Serving Kansas, Texas, and Oklahoma

888-809-9976

www.watertightroofinginc.com



"WaterTight's commitment to excellence is just that - WaterTight!"

Larry Easley
Storage Management Associates, Inc
TSSA Board of Directors 2012-2015



Message from the President.....Shawn Mills

I read that the Farmer's Almanac is estimating a cold and wet winter ahead. I am not sure about that, but I do know we have been seeing some rains across the state. It was a dry and hot summer, so hopefully we will see some relief for the fall. I also read that the majority of Kansas is at a high risk for West Nile Virus. Make sure you are using your bug spray. The effects from an infection can be long-lasting and devastating.

The numbers for cattle on feed are looking much higher than last year. At the same time, numbers for slaughter are lower, so the markets could be bumpy. The market trends have been lower and lower, and I am guessing that's not changing much in the coming weeks.

Policy-wise, there is quite a bit going on right now. Get on your computer and comment on the COOL petition. This is a common-sense petition, and we need to see some progress made on the labeling

front. R-Calf USA announced its planned expansion of the checkoff lawsuits. KLA President Lee Reeve said if successful it would "silence producer voices" which is an odd thing to say since the beef checkoff is not a lobbying entity. More on that later.

Finally, I hope to see a record turnout to the KCA Convention. The full schedule will be sent out soon, so keep an eye out for that. They will include a registration card. Please return the card and plan to attend.

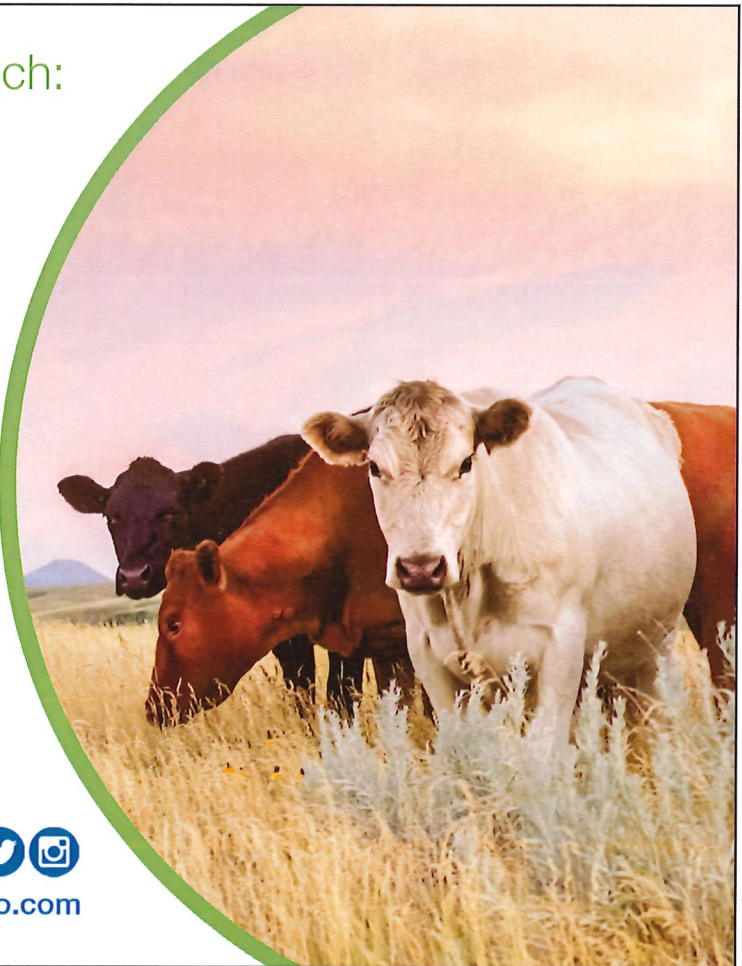


Until Next Time,
Shawn Mills

You value two things on your ranch: time and money.

At State Auto, we make it easy to get the right coverages at a competitive price. We have over 80 years of farm and ranch expertise. Your time is important and we know that. As a Kansas Cattlemen's Association member, you'll get exclusive benefits such as specialized coverages, competitive pricing and dividend potential.

Protect what matters most... your family and your farm. Our agents are your friends and neighbors, they get to know you and your ranch. To find a local agent, visit StateAuto.com/FindAnAgent.



USDA Announces Atypical Bovine Spongiform Encephalopathy

The U.S. Department of Agriculture (USDA) is announcing an atypical case of Bovine Spongiform Encephalopathy (BSE), a neurologic disease of cattle, in a six year old mixed-breed beef cow in Florida. This animal never entered slaughter channels and at no time presented a risk to the food supply, or to human health in the United States.

USDA Animal and Plant Health Inspection Service's (APHIS) National Veterinary Services Laboratories (NVSL) confirmed that this cow was positive for atypical H-type BSE. The animal was initially tested at the Colorado State University (CSU) Veterinary Diagnostic Laboratory (a National Animal Health Laboratory Network laboratory) as part of routine surveillance of cattle that are deemed unsuitable for slaughter. APHIS and Florida veterinary officials are gathering more information on the case.

BSE is not contagious and exists in two types - classical and atypical. Classical BSE is the form that occurred primarily in the United Kingdom, beginning in the late 1980's, and it has been linked to variant Creutzfeldt-Jakob disease (vCJD) in people. The primary source of infection for classical BSE is feed contaminated with the infectious prion agent, such as meat-and-bone meal containing protein derived from rendered infected cattle. Regulations from the Food and Drug Administration (FDA) have prohibited the inclusion of mammalian protein in feed for cattle and other ruminants since 1997 and have also prohibited high risk tissue materials in all animal feed since 2009. Atypical BSE is

different, and it generally occurs in older cattle, usually 8 years of age or greater. It seems to arise rarely and spontaneously in all cattle populations.

This is the nation's 6th detection of BSE. Of the five previous U.S. cases, the first, in 2003, was a case of classical BSE in a cow imported from Canada; the rest have been atypical (H- or L-type) BSE.

The World Organization for Animal Health (OIE) recognizes the United States as negligible risk for BSE. As noted in the OIE guidelines for determining this status, atypical BSE cases do not impact official BSE risk status recognition as this form of the disease is believed to occur spontaneously in all cattle populations at a very low rate. Therefore, this finding of an atypical case will not change the negligible risk status of the United States, and should not lead to any trade issues.

The United States has a longstanding system of interlocking safeguards against BSE that protects public and animal health in the United States, the most important of which is the removal of specified risk materials - or the parts of an animal that would contain BSE should an animal have the disease - from all animals presented for slaughter. The second safeguard is a strong feed ban that protects cattle from the disease. Another important component of our system - which led to this detection - is our ongoing BSE surveillance program that allows USDA to detect the disease if it exists at very low levels in the U.S. cattle population.

Trump Administration Announces US-Mexican Trade Agreement

The United States and Mexico have reached an accord to revise key portions of the North American Free Trade Agreement and expect to finalize it within a few days. Speaking from the Oval Office, Trump promoted the preliminary agreement with Mexico as a deal that could replace NAFTA and threatened to hit Canada with auto tariffs if it did not "negotiate fairly."

Mexican officials have said they wanted to have Canada back in the process and were working toward a trilateral deal by the end of the week. President Enrique Peña Nieto of Mexico, who joined the White House announcement via phone, said, "It is our wish, Mr. President, that now Canada will also be able to be incorporated in all this."

The revised deal with Mexico makes significant

alterations to rules governing automobile manufacturing, in an effort to bring more car production back to the United States from Mexico. U.S. and Mexico agreed not to impose tariffs on each other's agricultural goods, and not to use export subsidies. Free trade in agriculture was firmly established in the original NAFTA, and today's deal preserves most of those provisions.

The best kept secret in the feed business!

...has reduced pulls and death loss by more than 50% and also reduced antibiotic costs by more than 75%...

Make an impact on your operation.

IMPACT+DRENCH

PROBIOTIC / ENZYME / NUTRITIONAL DRENCH

Steve Garton - 620-664-0252 Derrick England - 785-263-6488

Hey America! Beef Up!

No. 24

Urgent: A “New Bretton Woods” Credit System NOW! Prod Leading Nations into Action

By Robert L. Baker

Aug. 20—The world monetary system has now entered a blow-out process. That is what’s driving the headlines we see about so-called foreign nations in crises. For example, the Turkish currency has fallen in value 37% since the beginning of the year; there are similar emergencies in Argentina and elsewhere, and fracturing within the Euro-Zone. But these problems are not confinable to somewhere “over there.” They reflect just one of the many aspects of today’s dangerous condition of instability of the whole system, resulting from 50+ years of casino economics, where huge money flows go into speculation and debt of all kinds, spurred by government bail-outs to Wall Street and City of London mega-banks. In the 2000s, there were the rip-off mortgage-backed-securities bets. Today, there are huge bubbles of unpayable debt, ranging from “emerging market” nations, to U.S. and European corporate and consumer debt. A blow-out, far bigger than 2007-2008 is pending.

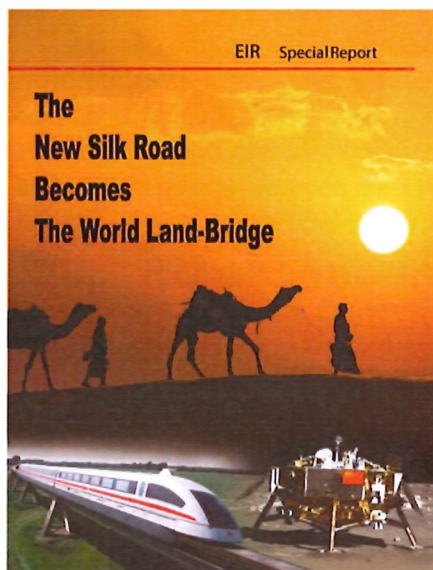
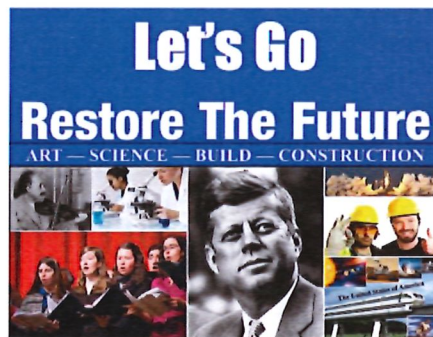
What is urgently needed, is a re-organization of the whole financial system, under the principles guiding the way that the post-WW II “Bretton Woods” “Fixed Exchange rate” System was put together. At the 1944 meeting of delegations of 44 Allied Nations in Bretton Woods, New Hampshire. Institutions were crafted with the intent of maintaining stable currency values, providing credit for infrastructure, agriculture, industry and services, all under the sovereign powers of individual nations. That intent worked for many years, until its opponents—centered in the old neo-British Empire of London money circles, succeeded in subverting, and finally ending it. In 1971, when Nixon ended the Bretton Woods System, the dollar was taken

off gold, and currencies floated and opened to speculation. The dollar collapsed 50%, corn and soybeans went as high as

\$3.45/bu. for corn in October 1974 and \$10.00/bu. for soybeans in June 1973. In the 1980s came more deregulation and the need for more hedging, as the speculators on Wall St. started affecting the prices more than the weather. Brokerage companies started giving free classes to farmers all over the USA, on how to hedge and forward contract. In 1999 came the repeal of the “Glass Steagall Act,” which had worked for 66 years to separate and Federally insure commercial banking, from speculative “banks.” In 2001 came the Commodities Futures Modernization Act, which allowed free-for-all speculation in commodities, currencies and derivatives—bets placed on bets! Within 10 years, the system itself blew up in the 2007-2008 crisis, which was only a pop-gun, compared to the financial nuclear bomb we face now, unless we take action.

In mid-August, the Schiller Institute issued a statement and petition on what to do, titled, “The Leaders of the U.S., Russia, China and India Must Take Action!” The punch line ends, “We the undersigned, appeal to President Trump, President Putin, President Xi Jinping and Prime Minister Modi, to convoke an emergency summit in order to create a New Bretton Woods system.”

The Schiller Institute is an international policy effort founded over 30 years ago, by statesman and economist Lyndon LaRouche, and his wife Helga Zepp-LaRouche to intervene to stay the course for economic development, peace and progress for all nations, in the tradition of the American System of Economics



and to mobilize against the Wall Street/British imperial subversion, who's speculation, has led to the present crisis.

What American farmers and ranchers are in a good position to understand, is that even if we succeed in certain issues-of-the-day, for example, resolving the "tariff conflict" and getting win-win trade; and also, getting a new farm law, before the September 30 expiration (the Congressional conference committee was announced Aug. 20,) we will lose every "issue" if the whole system blows out!

Leaders of the U.S., Russia, China and India Must Take Action!

Across Europe, Africa, Ibero America and Asia, nations are breaking from the straitjacket of London/Wall Street, IMF and the European Union, in favor of collaboration with China and Russia in the spirit of the New Silk road. The "Post-war" liberal order, (as the British bankers and their American Wall Street assets like to call it, which , they claim, must be preserved at all costs, through war or bailouts) is no longer able to restrain the human optimism which is gripping nations, moving them to declare their freedom from forced poverty -- both economic poverty and poverty of spirit. El Salvador, a nation entrapped in poverty and violence of the drug lords feeding the American drug epidemic, has just announced establishment of relations with Beijing, with separate integration projects with Honduras and Guatemala. Panama established relations with Beijing in June 2017 and the potential transformation taking place through out Central and South American through the New Silk Road, is now being seen everywhere.

It is expected that every African head of state, or nearly so, will be attending the Forum on China-Africa Cooperation (FOCAC) in Beijing on Sept. 3-4. As reported in depth in the Schiller Institute report *The New Silk Road Becomes the World Land-Bridge, Vol. 2*. China's Belt and Road has already transformed Africa, with great projects such as the Ethiopia-Djibouti railway and Kenya's Mombasa-Nairobi railway, with much more in the works.

And now, in Europe, the new government in Italy has created a "Task Force China," dedicated to making Italy "stand as privileged partner and leader in Europe in strategic projects such as the Belt and Road Initiative and Made in China 2015." Two government

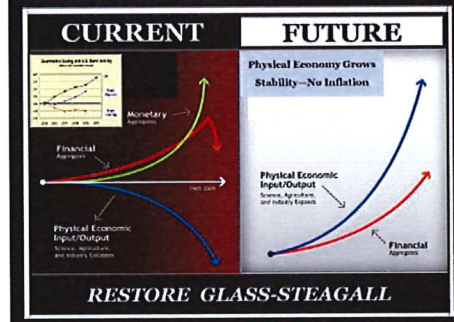
Delegations are going to China from Aug. 27-Sept. 2, to consolidate this new relationship. The EU is no longer the only game in town.

The momentum cannot be stopped, other than through war or uncontrolled disintegration of the Western financial system. A primary driver of war is that bubble in the Trans-Atlantic financial system swamped with \$1.5 quadrillion in speculative derivatives, mostly worthless gambling debts. The west has a choice: Do nothing while the old order explodes in financial chaos and war, or follow the lead of the Schiller Institute initiative calling on Presidents Trump, Putin, Xi and India's Prime Minister Modi to meet immediately, to initiate a New Bretton Woods system, to replace the dying Western monetary system with a new, fixed exchange rate creditary system, to facilitate the new Silk Road process of real economic development reaching into every corner of the globe.

To understand all that is happening in the United States politically and economically, one must see that the world is going through the biggest paradigm shift in human history. An old speculation system is bankrupt and is desperately sucking the blood out of what is left of the "Physical Producers" to prop up the "Speculation Driven Monopoly Systems" that are like "A 1000 Pound Flea on a 30 Pound Dog." The debt is too big and the producer's prices are being squeezed to feed the collapsing debt bubble that is going to blow.

The United States must return to the American System of "sovereign citizen" production, family-type-farms, manufacturing and banking that supports producers, not speculation. Bust up the financial, processing, and trade monopoly mechanisms. Producers and workers have a right to expect a price for their labor, such that, they can improve the social living standards of their families and communities each generation. That is where the American

family farmer/rancher system can rest assured there will be a future for the children of future generations of farmers, ranchers and all the people.



Robert L. Baker, Agricultural Research Specialist, Executive Intelligence Review, bb888k@gmail.com



GOBOB PIPE & STEEL

HAY TRAILERS FOR EVERY NEED!



ECONOMY

HIGH CAPACITY

SELF UNLOADING



ACCREDITED
BUSINESS



facebook

OFFICIAL
SUPPLIER 

866-531-8472

GobobCattleman.com



ROTO-MIX

Designed for Commercial Operation

You'll recognize us by our look.
You'll remember us for our quality!*

* Smooth sided 3 panel look is a registered trademark of FSI Fabrication, LLC.

Fp2 EzSpred

The Fp2 EzSpred Spreader's modular shell design offers versatility in attachment selection and is designed for commercial operators running 6 to 7 days a week with minimal downtime.

- Ease of use cab control panel.
- Micron filtration in the Oil Reservoir keeps foreign debris out of the system.
- All components that make up the brain of an Fp2 EzSpred are protected from the dirt and acids that can cause a system to fail. All electronic controls are transferred via water proof magnetic plug.
- Babbitt Bearings withstand the harsh environment of dirt and acid.
- The two-piece design allows for easy replacement if needed.
- Positive Idlers reduce chain wear and damage.
- Floor Chain—two sets of heavy duty 88C floor chain.
- Ez-Adjust Floor Take-Ups adjust the floor chains to the perfect tension every time.
- Removable Headboard.
- Fender Skirting is built into the bed.
- Horizontal Beaters are designed so that they cannot be overloaded.
- Vertical Beaters also utilize automatic overload prevention and are a power house generating 225 Hyd. HP.
- Available in Truck, Trailer or Semi-Trailer sizes up to 1583 cu. ft. capacity.



www.rotomix.com 620.225.1142



SWIHART
Sales Company
- Mist Sprayers -

Excellent for spraying cattle, nurseries, vegetables, vineyards, orchards, Christmas Trees, livestock, mosquitos, chicken houses, etc.

SPRAY INNOVATIONS



References available in your area

American Made

Low Maintenance • High Performance • FREE Shipping

S.I. Feeders

Swihart Sales Company

7240 County Road AA, Quinter, KS



785-754-3513 or 800-864-4595

www.swihart-sales.com



DOWNED CATTLE?

The Double D Sled 'n' Sling can safely and humanely move downed cattle quickly.

Health * Life * Investments * Senior Plans

Jim Phillips

"Where Service is #1 Priority"

(785) 945-3610
(800) 373-9559

(620) 727-3883 Mobile
Valley Falls, KS 66088-0160

Exhibitor Space Nearly Sold Out for KCA Convention

The 20th Annual Kansas Cattlemen's Association Convention and Trade Show will take place on November 9th & 10th, 2018 at the Meridian Center in Newton, Kansas. KCA is putting together an event where today's ranching and agriculture communities can come together with the state's agri-business leaders for educational seminars, industry updates, and policy meetings.

"As of now, I only have a few spaces left inside of the ballroom area, which is where exhibitors can watch the presentations from their tables. I have a couple tables left in the hallway as well. We are excited to see so many new exhibitors expressing interest this year," stated Jodie McNutt, KCA Administrative Coordinator.

Exhibitors: Due to the limited space of our venue, it is important to reserve exhibitor space early. Only select locations in the building have power, so if you require an outlet, reserve your space now! We are unable to hold booth space without a signed contract and payment. All spaces will be assigned on a first-come, first-served basis. Exhibitor information, including move-in, move-out, and other details will be sent by October 15, 2018. Outdoor space will be available for displaying equipment and machinery that cannot come into the building.

Sponsors: Promoting your products and services through the sponsorship program or benefit auction is simple and effective. Interested sponsors should contact us early for guaranteed inclusion in all provided marketing opportunities!

Contact Jodie McNutt at 785-238-1483 or visit www.kansascattlemen.com for additional details or to customize a plan that best suits your business needs.



**MANHATTAN - ABILENE - JUNCTION CITY - KANSAS CITY
MARYSVILLE - RILEY - SALINA - TOPEKA - WAMEGO
WE ARE A STATE AUTO LICENSED AGENCY
SERVICING ALL OF KANSAS**

**OUR AGENCY CREATED THE FARM DIVIDEND PROGRAM WITH
YOUR NEEDS IN MIND**

CONTACT US TODAY AND SEE IF STATE AUTO IS A GOOD FIT FOR YOUR OPERATION



JAY COPELAND
785-410-5509



LANCE SHARP
785-656-2686



LINDEN STUEVE
620-794-8359



MIKE SPOHN
785-210-6155

**Specializing in innovative risk management strategies for farmers and
commercial agriculture!**

www.copelandins.com

www.kansascattlemen.com

Schedule of Events

- November 6** **General Election**
- November 9** **KCA Annual Membership Meeting**
- November 9-10** **KCA Annual Convention**
- December** **Maple Hill Winter Meeting**



Luco Mfg. Co.
 Hydraulic Chutes ~ Working Circles
 Cake Feeders ~ Continuous Fencing
 Panels & Gates
 See Us at www.lucoinc.com
 1-888-816-6707

Thank you for your Membership

- | | |
|-------------------------|-----------------------|
| Farmers State Bank | Gregg Curry |
| Wayne Niehues | John Ney |
| Ronald Say | Tom Haffner |
| Lee Isaac | Greg Carey |
| Stanley Kliesen | Justin Clark |
| Tim Nordell | Jesse Jones |
| Gerald Cox | Wildcat Feeds, LLC |
| Phil Hesse | Bill Mellies |
| Eugene Shapland | Steen & Twila Lister |
| Ken Danzer | Chasen Gann |
| Chris Kearney | Pat Kerschen |
| Gayle Brock | Alan Long |
| Justin Brazle | DJ Edwards |
| Charley Chambers | Frank Miller |
| Jeff Lackey | Dennis McKinney |
| Scott Besler | Ibbetson Brothers LLC |
| Paola Livestock Auction | Jimmy Carter |



Offering a CHOICE of companies and risk management solutions tailored to fit YOUR needs since 1947

215 N. Main
 Garden City, KS
 800.633.0746



1515 E. 30th Ave.
 Hutchinson, KS
 800.362.2104



Dams ~ Site Prep ~ Land Leveling
 ~ Feedlot Construction ~ Terraces ~

Richard Dirks
 770 W. Rd 270, Scott City, KS 67871
 620-872-1793



AGRICULTURAL ENGINEERING ASSOCIATES, INC.

John A. George, P.E.
 Chief Engineer

1000 Promontory Drive P 620-756-1000
 PO Box 4 C 620-704-9122
 Uniontown, KS 66779 F 620-756-4600
johng@agengineering.com

MIX 30™
 THE HIGH ENERGY "ALTERNATIVE"
 LIQUID FEED

COW-CALF	STARTING CATTLE
GRASS CATTLE	FINISHING CATTLE
CALF-CREEP	DAIRY CATTLE
GRAINS	MIXES

Contact us for information, pricing, or for the location of a dealer near you.

Call us Today at 800-575-7585



1374 Horned Owl Road
 Horton, KS 66439
 785-486-3302
 Fax 785-486-3990
 800-615-0299
www.natures-way.com

Dan Haverkamp
 Producers of MSE
 Direct Fed Microbial
 for livestock



900 N. Washington St.
 Abilene, KS 67410

(785) 263-3436
 Fax (785) 263-3101
mary.rawhide@gmail.com
www.rawhideportablecorral.com

Rawhide Portable Corral & Livestock Equipment

*1 Person
 No Lifting
 10 Minutes*



Kansas Cattlemen's Association
PO Box 1489
Junction City, KS 66441

Presorted Standard
U.S. Postage
PAID
Permit No 122
Junction City, KS 66441
Return Service Requested

-- KCA Feed Yards --

Support KCA and the Independent Producer
Contact a KCA Feed Yard today

Double B&S Cattle Co.
Mike Bartlett
Fowler, KS
(620) 885-4558

Ford County Feed Yard
Danny Herrmann
Ford, KS
(620) 369-2252

Hoxie Feed Yard
Scott Foote
Hoxie, KS
(785) 386-4519

Ottawa County Feeders
Perry Owens
Minneapolis, KS
(785) 392- 2184

Learn more about these fine KCA feed yards on the KCA website!

THIRTY **30** SERIES

HYDRABED

from **TRIPLE C** INC

TRIPLE C
SABETHA, KS
HYDRABED

TRIPLE C
SABETHA, KS
HYDRABED

TRIPLE C
SABETHA, KS
HYDRABED

VISIT OUR WEBSITE TO
FIND A DEALER NEAR YOU!

902 Highway K246 - Sabetha, KS 66534 | Toll Free: 800-530-5624 | 785-284-3674 | www.triple-c-inc.com