

# KCA News

KANSAS CATTLEMEN'S ASSOCIATION

December 2018

## KCA Hosts Final Regional Meeting of the Year in Maple Hill

Independent cattle producers gathered in downtown Maple Hill in the meeting room of NextGen's Chophouse, the evening of December 12, 2018, for an animal health and policy seminar put together by Kansas Cattlemen's Association (KCA). Dr. Justin Smith, Kansas Animal Health Commissioner, provided an update on the Animal Health Department and Tyler Dupy, KCA, provided a legislative and policy update to the 50 producers in attendance.

Dr. Justin Smith began with an explanation of the departments which fall under the Division of Animal Health within the Kansas Department of Agriculture (KDA), including: Animal Disease Control, Branding Department, and Animal Facility Inspection. He continued by discussing a collaboration between U.S. Department of Agriculture (USDA) and KDA to provide field veterinarian support throughout the state on a region by region basis.



Dr. Smith continued, touching on Trichomoniasis, Rabies, Anaplasmosis, Johne's disease, amongst others before moving into topics of traceability and foreign animal disease response plans. Finally, Dr. Smith discussed the Livestock and Brand Investigation Unit. This law enforcement unit headed under the Kansas Attorney General's office is capable of investigating legal cases in situations of felony livestock theft, felony livestock pharmaceutical theft, and brand violations.

Tyler Dupy, KCA CEO and Executive Director, gave a brief explanation of how KCA focuses its attention on producer-driven policy within the state of Kansas and nationally. He discussed the transition to a new administration will bring some changes to the upcoming legislative session set to begin January 14, 2019 and a concern KCA has with regard to the platform supporting corporate farming for Kansas by the Kelly/Rogers campaign.

Kansas, as an import state, receives in excess of 5 million head of cattle over our borders each year. In addition, producers buy and sell over 2 million head of cattle each year through Kansas livestock markets. With so many cattle and other livestock moving around each day, disease prevention and treatment is critical to keeping the Kansas cattle herd healthy. Dr. Smith discussed the facts of African Swine Fever, including how it can survive for a considerable and perhaps infinite amount of time outside of its host. The effects of an African Swine Fever outbreak in the U.S. could be disastrous, including an estimated loss of \$16.5 billion to the swine industry and even up to an \$8 billion loss for beef due to cheap pork flooding the domestic market.

Federally, Dupy explained that there are significant things going on right now, including the passage of the new Farm Bill just that day, and the soon to be published new WOTUS rule to the Federal Registry. He went on to explain other updates on the Beef Checkoff, value-added programs, Electronic Logging Devices, and more.

A free beef supper was served and made possible by these generous sponsors of the meeting: Water-Tight Roofing, Ag Partners COOP, Inc., Gee Tire, Inc., Heritage Tractor, Inc., Wildcat Feeds, LLC, Farmers State Bank, Tarwater Farm & Home Supply, and State Auto Farm & Ranch Insurance.

## Board of Directors

**Shawn Mills**  
President

Grenola, KS

(620)205-8100

shawntmills@gmail.com

**Perry Owens**

Vice President

(785)392-2184

Minneapolis, KS

ocfi@nckcn.com

**Greg Davis**

Sec./Treasurer

Madison, KS

(620)340-9534

ranchlandfeeds@gmail.com

**Dave Murphy**

Emporia, KS

(620)481-9607

davemurphy1720@gmail.com

**Tony Anderson**

Farlington, KS

(620)724-2860

tylertammytony@gmail.com

**Nicole Pfrang**

Goff, KS

(785)285-1066

nicpfrang@gmail.com

**Andy Miller**

Fall River, KS

(620)289-6168

andymiller2004@gmail.com

**Bill Ireland**

Yates Center, KS

(620)625-2814

Contact KCA

PO Box 1489

Junction City, KS 66441

Phone 785-238-1483

Fax 785-238-1518

www.kansascattlemen.com

cowsrus@kansascattlemen.com



110060188216



@kansascattlemen

## Ballot Results

The Kansas Cattlemen's Association Board of Directors met on December 17, 2018 to certify the ballot results of the 2018 KCA Annual Membership Policy Ballot. The ballot consisted of fourteen existing policy renewals, two policy modifications, four proposed resolutions, a membership directive, and election of officers.

### Ballot Item

Ballot Item #1: Value Added Programs

Ballot Item #2: COOL

Ballot Item #3: Packer Ban

Ballot Item #4: National ID Plan

Ballot Item #5: KS Anti-Trust Law

Ballot Item #6: KS Brand Law

Ballot Item #7: Energy

Ballot Item #8: Humane Horse Handling

Ballot Item #9: Animal Welfare

Ballot Item #10: Water Rights

Ballot Item #11: Wild & Feral Horses

Ballot Item #12: KCA as a Plaintiff WTO

Ballot Item #13: KS Corporate Farming Law

Ballot Item #14: Beef Checkoff FOIA

Ballot Item #15: Bio-Security

Ballot Item #16: Disaster Assistance

Ballot Item #17: Silk Road

Ballot Item #18: Glass-Steagall

Ballot Item #19: Test Tube Meat

Ballot Item #20: Alternative Proteins

Ballot Item #21: USCA Affiliation

### Action

Renewed

Renewed

Renewed

Renewed

Renewed

Renewed

Renewed

Renewed

Renewed

Renewed

Renewed

Renewed

Renewed

Renewed

Approved

Approved

Adopted

Adopted

Adopted

Adopted

Rejected

### Board of Directors

Brian Stewart

Elected

Daryl Larson

Elected

John Ney

Elected

Full versions of the updated membership resolutions and bylaws will be posted to the KCA website on January 1, 2019. You may also request a copy of the resolutions by emailing KCA at cowsrus@kansascattlemen.com.

The best kept secret in the feed business!

**Liquid+**  
FEEDS

...has reduced pulls and death loss by more than 50% and also reduced antibiotic costs by more than 75%...

Make an impact on your operation.

**IMPACT+DRENCH**

PROBIOTIC / ENZYME / NUTRITIONAL DRENCH

Steve Garton - 620- 664-0252      Derrick England - 785-263-6488

**Happy  
New  
Year  
2019!**

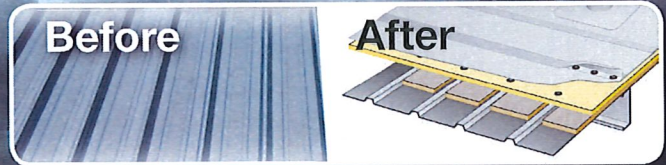


# WATER TIGHT ROOFING

**COOLER COWS ARE HAPPIER COWS!**

### Elastomeric Coating

### Single Ply Membrane



Claus Dairy Farm Dalhart



Centramatic

**No tear off and no disruption  
to your production.**



Serving Kansas, Texas, and Oklahoma

"This was a very clean operation. It didn't cost more or take longer. They did exactly what they said they would do."

Dyke Rogers  
Owner - CDFD

"WaterTight's commitment to excellence is just that - WaterTight!"

Larry Easley  
Storage Management Associates, Inc  
TSSA Board of Directors 2012-2015

# 888-809-9976

[www.watertightroofinginc.com](http://www.watertightroofinginc.com)



Oklahoma Self Storage Association

# Message from the President.....Shawn Mills

Merry Christmas and a Happy New Year! It is amazing the holidays are here and we are already closing out another year. As we head into the 2019 calendar year, we will be facing some tough legislative pressures from the new Governor for corporate farming restriction repeals and possible tax increases. Although my term as KCA President is two-thirds over, the legislative session is where we roll up our sleeves and really get to two-thirds of the work.

the new space. Prior to the move, the networks, phones, and other technology needed to be installed. It will take some time to get fully moved and settled. When you are in the Junction City area, take time to stop by and visit with the staff and see the new office.



Thank you to everyone that returned a ballot. We received more ballots this year than we have seen in many years. It was nice to see so many members taking part in the election and getting involved. Setting policy is a critical part of what keeps KCA relevant in today's industry discussions with regulators and legislators. Your vote guides the board in the decisions we make on your behalf.

Finally, keep an eye out for more information regarding the Kansas Cattlemen's Beef Cooperative. The goal is to push forward with action on the branded beef program and possibly begin light operations sometime this year. There is still a lot of work to do on that front.

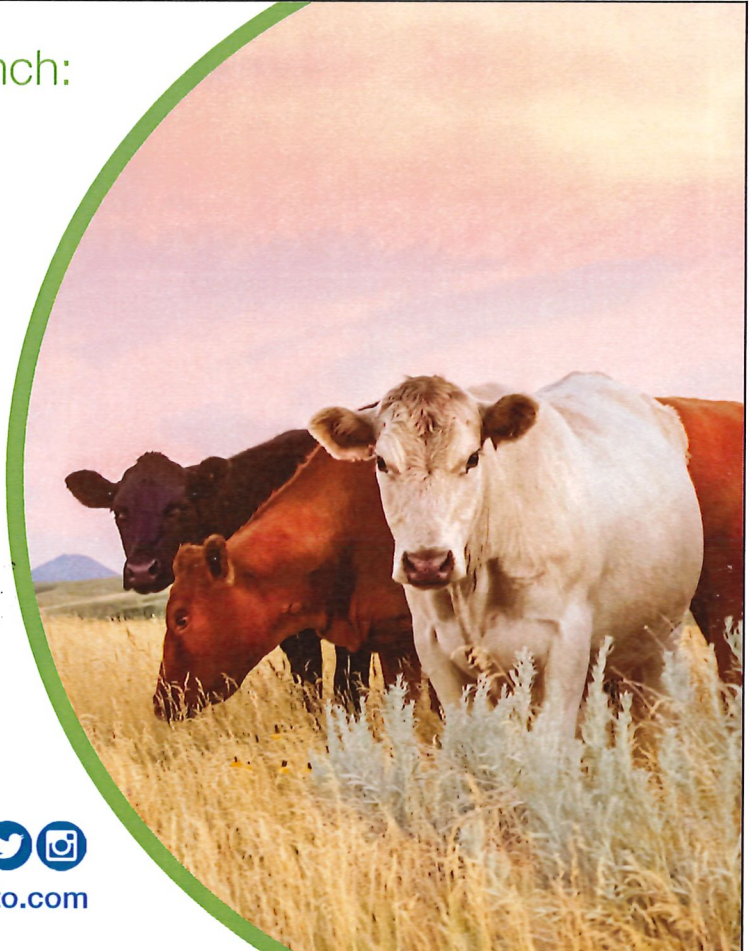
Until Next Time,  
Shawn Mills

KCA is in the process of moving into our new and permanent location. Upon construction completion, we were able to begin the transition into

## You value two things on your ranch: time and money.

At State Auto, we make it easy to get the right coverages at a competitive price. We have over 80 years of farm and ranch expertise. Your time is important and we know that. As a Kansas Cattlemen's Association member, you'll get exclusive benefits such as specialized coverages, competitive pricing and dividend potential.

Protect what matters most... your family and your farm. Our agents are your friends and neighbors, they get to know you and your ranch. To find a local agent, visit [StateAuto.com/FindAnAgent](http://StateAuto.com/FindAnAgent).



# **Kansas Cattlemen's Association Scholarship Programs**

## **KCA & GoBob Pipe & Steel Scholarship**

### **Nathan Pike Memorial Scholarship**

As a "for producers, by producers" non-profit organization, KCA offers education scholarship programs designed to give back to the communities that support KCA and the independent producer. Funding of these programs is made possible by contributions from KCA partnering organizations, membership donations, and county meeting support.

#### **Purpose**

The Kansas Cattlemen's Association and the Go Bob Pipe & Steel Scholarship are designed to ease the financial burden of qualified scholars seeking higher education, including: four-year college/university, junior college, vocational/trade, or technical training for the school year beginning the Fall 2019.

#### **Qualifications:**

The following must be met or completed to be considered:

1. Applicant must be a high school or college student with a GPA of 2.5 or higher. Applicant must plan to attend a junior college, 4+ year college/university, vocational/trade school or enrolled in technical training for the fall of 2019.
2. Applicant must write a short essay on one of the following topics. The essay must be 250 - 500 words.
  - a. How do alternative proteins compare to conventionally produced wholesome beef?
  - b. Explain the positives and negatives of Animal Disease Traceability programs. Provide your own original arguments for and against such programs.
  - c. A popular buzzword in today's industry speak is "Sustainability". How would you define "Sustainable Agriculture" and how does your definition apply to independent beef production?
3. Applicant must completely fill out the application, including signatures from respective schools, and return it to the KCA office by March 31, 2019. Parent signature is required for high school students.
4. Include the applicants most-recent school transcript.
5. Provide an updated single-page student resume that outlines education achievements, related work experience, and extra-curricular activities.

#### **Completed applications are to be returned by March 31, 2019 to:**

Kansas Cattlemen's Association  
Attn: Scholarship Program  
P.O. Box 1489  
Junction City, KS 66441

Scholarship recipients will be chosen by the KCA Board of Directors. Recipients will be announced in the Spring of 2019. Awards will be issued directly to the attended institution or a check will be made payable to the student and the institution provided by the recipient in their application. Recipients are responsible for providing enrollment verification prior to the July 1, 2019 disbursement date.

**For the Full application, please visit [www.kansascattlemen.com/scholarships](http://www.kansascattlemen.com/scholarships)**

# Hey, America! Beef-Up! No. 27

## Focus for the New Year: A New Economic System

by Robert L. Baker



(Dec. 18, 2018) As we head toward a 2019 New Year and say goodbye to the 2018 old year, our nation and the world is confronting one of the most powerful transformations in history. This will be a proud time to reflect on the great foresight of the founding fathers of the United States. The world is seeing more and more clearly the serious magnitude of a confrontation between the destructive power of global-mega corporate monopolies vs. the idea of businesses owned by sovereign citizens as was established as a national - serving goal by the American System of Economics, established and defended by our national government, until, in August 1971, Nixon stopped defending the dollar and removed the U.S. from the fixed exchange rate system known as the Bretton Woods System. (*Look it up*).

There is a fight. A new anti-monopoly economic spirit, modeled on the American System is growing exponentially around the world. Remember the Tractor-cades of 1979. (*Look it up*). Lyndon LaRouche, the world's leading American System economist, kept this American economics spirit alive as mega-globalization and deregulation destroyed the policies that maintained a rock-solid basis and spirit for strong rural communities, family farms, privately owned businesses and manufacturing. Nations are being called upon to defend the people.

Wyoming rancher, Tracy Hunt, who gave an excellent in-depth presentation at the recent KCA State Convention, exposing the Global Roundtable for Sustainable Beef, is traveling around the nation laying out a vital discussion of the control mechanism that, Old-Money Colonial-European-Oligarch families are using, indirectly, through a massive network of organizations, food and retail corporations and institutions in the U.S., led by the World Wildlife Fund (WWF), to brainwash the masses into believing the "Sky is Falling" environmentally and that the big money Wall Street and London control is invincible.



Guess what? They are now very weak and the majority of the world's population is moving against this unhuman policy called globalization, and wants policy for human beings. The family farm, for instance.

A March 2018 the Gallop Poll asked Americans the question, who is the leading economic power in the world. 44% said China, 42% said the United States.

What needs to be done? History shows us the answer and it works. It is called the American System of Economics. Lyndon LaRouche summed it up in what he called The Four Economic Laws. They work. They are simple.

First the focus must be on creating communities that prioritizes the development of the minds of the children all the way to a wise old age, because it is human. Like a family farmer. That means you have to protect the citizens from institutions with "buzzer-stick" marketing programs that condition humans, as livestock, because we need a fair parity wage and compensation to develop the minds of those kids. We need a government policy that defends the people not the making money is-the-only-thing corporations.

So what do you do? **1st: Study the Glass-Steagall Act** and restore it...(*Look it up*) **2nd: Restore a Hamiltonian Credit System** to finance massive infrastructure building...(*Look it up*) **3rd: Restore a National Bank,** (*Look it up*) like our nation has had before, to direct the credit in a coordinated way to

build the infrastructure the nation needs into the future. Not to make money, but for the children in the future. **4th: Build the Biggest Infrastructure Projects in History**, including One Million New Family Farmers. Coast to Coast High Speed Rail, Space Exploration and Education, etc. Then: we anchor the U.S. Dollar to a **New Fixed Rate Bretton Woods System**.

Does it sound too lofty—"a new economic system"—but unless our nation makes some key shifts in that direction in

2019, we face chaos, maybe even war. As of year end, look where we are.

OK, we have a farm bill awaiting the President's signature; that ends the uncertainty. But the economic system itself is out of whack. That deserves thought and action as the New Year comes in. That gives us grounds for hope.

First, take a hard look at the Wall Street/City of London-serving financial system we've had for the last half-century. The size of today's financial bubbles are worse now than before the 2008 blowout: risky debt (corporate, consumer, etc.) daily speculation, and derivatives (betting). Going along with this, the U.S. physical and social economy has been hollowed out. Infrastructure is decrepit. Farmers and ranchers are hit with the price crisis; while mega-consolidation takes place. U.S. industry is not what it should and could be. Rates of drug use and suicides are soaring. One telling metric is that the U.S. life expectancy is now in decline.

### Tumult in Europe

This is how to make sense of what is happening across the Atlantic. The Wall Street/London financial system has imposed the same conditions in Europe as in the U.S., of bail-outs to the megabanks, and furthering speculation, while conditions for citizens to be productive are looted. The European Union head office in Brussels is backing everything London wants, including conducting dangerous provocations and accusations against Russia and China.

But as of December, there are strong reactions against all this in the major EU nations of Germany, Britain and France. In 2016, British voters elected to exit the EU—the Brexit, to try to escape the EU austerity and looting. Now, Theresa May, the U.K. Prime Minister, may be booted out of office this month for not implementing Brexit; there will be a new Brexit vote Jan. 3. In Germany, Chancellor Angela Merkel is a has-been. She had to step down this month, as head of her party, the Christian Democrats, amidst opposition to her going along with destructive EU/London policies.

In France, masses of people have taken to the streets every Saturday since mid-November, to protest the unlivable conditions. It's called the "Yellow Vest" movement, because many protestors wear the reflective traffic vests. Gasoline prices have risen 25% in a year, which hits many who have moved out from the cities, seeking affordable housing, and now



can't afford to get to work. For farmers, diesel is up even more than that. The French Farmers Union, FNSEA, is engaged in the protest. President Emmanuel Macron doesn't get it, nevertheless, on Dec. 10, he had to announce postponing more fuel price increases, in the face of the mass wrath against him. Macron has near zero support for his greenie goal to tax fossil fuels, "decarbonize" France, and shut down its nuclear power sector by 30 percent.

### Showing the Way ---

#### Credit for Growth

The only answer is for citizens to put forward the content of policies that will get out of this disaster. Stop the speculation and restore sound banking by putting back the Glass Steagall Law.

Take Federal action to direct plentiful credit to infrastructure-building, through a national bank, as has been done several times in our history. Restore parity-based pricing for farming. Make a priority of advanced science—R & D in space and in nuclear fusion. Put the corrupt bankers in jail!

The time is right. In November, an Italian Member of the European Parliament, Marco Zanni, came to Washington DC and met with many Congressmen, especially from the Farmbelt, about supporting this perspective. Zanni delivered a petition calling for Glass Steagall and related policies in the Transatlantic, signed by 217 European leaders. Many leaders of the Italian government support this, much to EU fury in Brussels. Italy leaders want to build up their agriculture in new "Silk Road" trade.

The crisis calls out for citizens to lead the way. The KCA Resolutions from our November conference are right on the mark. One is, "Re-enact Glass Steagall Law for Sound banking and Credit to Rebuild the Nation;" and another, "Stop Low Prices and Speculation; Collaborate with the Silk Road for Win-Win Prosperity."

In this light, the December meeting between President Trump and Chinese President Xi Jinping in Argentina was favorable. The 90-day period they mandated to resolve trade issues between our two nations can likewise be the time we can use for overall policy shifts, away from the banksters, and back to the people. Let's make a Happy New Year! Peace, good will to all!

*Robert L. Baker, Agricultural Research Specialist, Executive Intelligence Review, [bb888k@gmail.com](mailto:bb888k@gmail.com)*

# RANCHERS:

## DO YOU OWE 2018 TAXES?



# GOBOB

PIPE & STEEL

### Cattle Equipment qualifies for

# SECTION 179



**FIND OUT MORE:**



**844-304-4779**

**GobobCattlemen.com**



**ROTO-MIX**

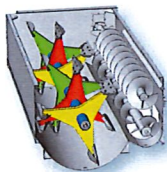
# Blend Uniform Rations

## No One Does it Better.

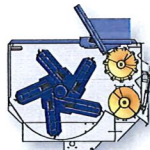
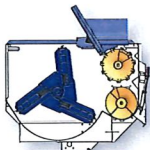


### Find the Right Feed Mixer.

Our rotary feed mixers are available with a choice of rotor styles to better mix your specific kind of rations. Commercial series mixers are available in 540 to 920 cu ft. truck, trailer and stationary models.



**Staggered Rotor Option**  
GeneRation II is ideal for feeding rations that require wet distillers grains.



**3, 5 and 6-Bar Options**  
Rotary Mixer allows more leaves and particle length during mixing with hay.



[www.rotomix.com](http://www.rotomix.com) 620.225.1142



**SWIHART**  
Sales Company  
- Mist Sprayers -

Excellent for spraying cattle, nurseries, vegetables, vineyards, orchards, Christmas Trees, livestock, mosquitos, chicken houses, etc.



References available in your area

American Made  
Low Maintenance • High Performance • FREE Shipping

### S.I. Feeders

Swihart Sales Company  
7240 County Road AA, Quinter, KS



785-754-3513 or 800-864-4595  
[www.swihart-sales.com](http://www.swihart-sales.com)



## DOWNED CATTLE?

The Double D Sled 'n' Sling can safely and humanely move downed cattle quickly.

Health \* Life \* Investments \* Senior Plans

**Jim Phillips**

"Where Service is #1 Priority"

(785) 945-3610  
(800) 373-9559

(620) 727-3883 Mobile  
Valley Falls, KS 66088-0160

## William "Bill" Ireland Appointed to KCA Board of Directors to Fill Vacancy

From Yates Center, Kansas, William "Bill" Ireland is a life-long cattleman and family man. Bill was born and raised in Yates Center and has spent all of his life there except for when he served his country in the U.S. Air Force. Bill and his wife, Yvonne, were married in 1977 and have three sons, Zach, Jon, and Joel, and a daughter, Beth, and six grandchildren. Although she passed away in 2004, for Bill, Yvonne will always be the love of his life. "She was a great singer, gifted with children, and dedicated to her family," Bill professed.

Keeping the family in the ranch operation is important to Bill. Bill's children are still involved in the family operation. The family runs a cow/calf operation as well as backgrounds a couple hundred steers and sells them when they come off of grass in late summer. Bill joined KCA in 2006 when he attended a meeting in Gas where Leo McDonnell spoke about the importance of country of origin labeling.

Then and even now, Bill continues to believe that KCA stands up for what cattlemen believe in, one issue being the promotion of USA BEEF. Other topics

that are important to Bill are environmental issues when it comes to protecting producers and ensuring that a safe wholesome product reaches consumers.

Bill has previously served on the Board of Directors from April 2013 to April 2016. During his time on the board, Bill held firm to the belief that KCA remain an independent organization and represent cattle producers based on the KCA membership views. He also pushed for COOL regulations and Beef Checkoff reorganization. He could be seen at numerous KCA events throughout the years, including convention, regional meetings, annual meetings, cattlemen's days, and more.

In 2014, Bill traveled to Washington, D.C. to lobby for independent cattle producers. During his time there, he met with members of congress and the USDA regarding the Beef Checkoff.

Bill was appointed by the KCA Board of directors by unanimous vote. He accepted the appointment and immediately began his term in December. The term will expire in April 2020.



**MANHATTAN - ABILENE - JUNCTION CITY - KANSAS CITY  
MARYSVILLE - RILEY - SALINA - TOPEKA - WAMEGO  
WE ARE A STATE AUTO LICENSED AGENCY**

**SERVICING ALL OF KANSAS**

**OUR AGENCY CREATED THE FARM DIVIDEND PROGRAM WITH  
YOUR NEEDS IN MIND**

**CONTACT US TODAY AND SEE IF STATE AUTO IS A GOOD FIT FOR YOUR OPERATION**



**JAY COPELAND**  
785-410-5509



**LANCE SHARP**  
785-656-2686



**LINDEN STUEVE**  
620-794-8359



**MIKE SPOHN**  
785-210-6155

**Specializing in innovative risk management strategies for farmers and  
commercial agriculture!**

[www.copelandins.com](http://www.copelandins.com)

[www.kansascattlemen.com](http://www.kansascattlemen.com)

## KCA Scheduling 2019 Regional Meetings: Seeking Recommendations

The Kansas Cattlemen's Association (KCA) hosts county and regional meetings throughout the year around the state of Kansas. The purpose of these meetings is to bring social and educational opportunities to the members of the association and for the public, as well as recruit new members. We are currently seeking recommendations from throughout the state for meeting locations and topics. If you are interested in helping to coordinate a meeting or would like to recommend specific speakers or topics in your area, we'd love to hear from you.

Hosts help KCA staff by recommending locations for meetings, possible local sponsors, and by spreading the word of the meeting to friends and neighbors. KCA does the bulk of the heavy lifting by setting up presentations, finding sponsors, and arranging for meals.

Give us a call to arrange for a regional meeting in your area. Please contact the KCA offices at 785-238-1483 or send an email to Jodie McNutt at [jodie@kansascattlemen.com](mailto:jodie@kansascattlemen.com).



**Luco Mfg. Co.**  
 Hydraulic Chutes ~ Working Circles  
 Cake Feeders ~ Continuous Fencing  
 Panels & Gates  
 See Us at [www.lucoinc.com](http://www.lucoinc.com)  
 1-888-816-6707

**KCA Has Moved!**  
 Stop by and visit us at our new physical location at 930 West 6th Street in Junction City, Kansas. Our mailing address will remain the same:  
**P.O. Box 1489, Junction City, KS 66441**



Offering a CHOICE of companies and risk management solutions tailored to fit YOUR needs since 1947

215 N. Main Garden City, KS 800.633.0746	<b>KFSA</b> AGENCY <i>More Than Just Insurance!</i>	1515 E. 30th Ave. Hutchinson, KS 800.362.2104
--	---	---

**DIRKS EARTHMOVING**  
 Scott City, Kansas  
 Dams ~ Site Prep ~ Land Leveling  
 ~ Feedlot Construction ~ Terraces ~

**Richard Dirks**  
 770 W. Rd 270, Scott City, KS 67871  
 620-872-1793



**AGRICULTURAL ENGINEERING ASSOCIATES, INC.**

John A. George, P.E.  
 Chief Engineer

1000 Promontory Drive PO Box 4 Uniontown, KS 66779 <a href="mailto:johng@agengineering.com">johng@agengineering.com</a>	P 620-756-1000 C 620-704-9122 F 620-756-4600
--	--

**MIX 30™**  
 THE HIGH ENERGY "ALTERNATIVE"  
 LIQUID FEED

COW-CALF GRASS CATTLE CALF-CREEP GRAINS	STARTING CATTLE FINISHING CATTLE DAIRY CATTLE MIXES
--	--

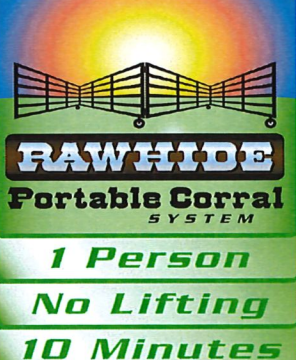
Contact us for information, pricing, or for the location of a dealer near you.

**Call us Today at 800-575-7585**



1374 Horned Owl Road  
 Horton, KS 66439  
 785-486-3302  
 Fax 785-486-3990  
 800-615-0299  
[www.natures-way.com](http://www.natures-way.com)

**Dan Haverkamp**  
 Producers of MSE  
 Direct Fed Microbial  
 for livestock



900 N. Washington St.  
 Abilene, KS 67410

(785) 263-3436  
 Fax (785) 263-3101  
[mary.rawhide@gmail.com](mailto:mary.rawhide@gmail.com)  
[www.rawhideportablecorral.com](http://www.rawhideportablecorral.com)

**Rawhide Portable Corral & Livestock Equipment**

*1 Person  
 No Lifting  
 10 Minutes*



Kansas Cattlemen's Association  
P.O. Box 1489  
Junction City, KS 66441

Presorted Standard  
U.S. Postage  
PAID  
Permit No 122  
Junction City, KS 66441

Return Service Requested

**-- KCA Feed Yards --**

Support KCA and the Independent Producer  
Contact a KCA Feed Yard today

**Double B&S Cattle Co.**  
Mike Bartlett  
Fowler, KS  
(620) 885-4558

**Ford County Feed Yard**  
Danny Herrmann  
Ford, KS  
(620) 369-2252

**Hoxie Feed Yard**  
Scott Foote  
Hoxie, KS  
(785) 386-4519

**Ottawa County Feeders**  
Perry Owens  
Minneapolis, KS  
(785) 392- 2184

Learn more about these fine KCA feed yards on the KCA website!

THIRTY **30** SERIES  
**HYDRA BED**  
from  
**TRIPLE C**  
INC

TRIPLE C  
SABETHA, KS  
HYDRA BED

SABETHA, KS  
HYDRA BED

VISIT OUR WEBSITE TO  
FIND A DEALER NEAR YOU!

902 Highway K246 - Sabetha, KS 66534 | Toll Free: 800-530-5624 | 785-284-3674 | [www.triple-c-inc.com](http://www.triple-c-inc.com)