

KCA News

KANSAS CATTLEMEN'S ASSOCIATION

May 2018

KCA Regional Meeting in Moline Explored Effects of Neospora and BVD

Kansas Cattlemen's Association (KCA) hosted a regional cattle producer's meeting in Moline, Kansas on May 2, 2018. The meeting took place at the Moline Grade School/Hornet's Nest gymnasium. A free USA-Beef meal was served.

The meeting included a policy presentation with KCA as well as a presentation by expert veterinarian and President of SEK Genetics, Dr. Don Coover. Coover discussed managing risks of BVD and Neospora. Ron Kramer of Idexx Laboratories was also in attendance to answer questions.

Dr. Coover discussed *Neospora caninum*, a disorder found worldwide, and considered the most common cause of abortion in dairy and beef cattle in many parts of the

USA. Infections are most common from eating infected material, generally spread through contaminated feces. One control method is to test for the disease and remove infected cattle from the herd. Dr. Coover recommended to test and be aware of Neospora, remember animals that test positive are at much higher risk of pregnancy loss, males are dead end hosts, and to always test recips for Neospora.

Next Dr. Coover discussed BVD. According to Merck, BVD was the most commonly diagnosed virus in bovine abortion cases. Persistent infection is of critical importance. Persistently infected (PI) calves are born that way and they will die that way. Coover recommended getting educated, stating, "if you aren't scared to death of BVD, you don't know enough about it."

Dr. Coover discussed the importance of testing for BVD. Key elements included: a PI cow will always have a PI calf, you must test every animal directly or indirectly, don't test the cow, test the calf, pooling samples is a bad technique for testing, and the tests must be accurate. Observations of herds can be somewhat misleading when considering BVD, however if things aren't adding up, too much pinkeye, scours, foot-rot, pneumonia, and sudden death, think BVD.

KCA staff provided a policy presentation update of active legislation and regulations during the meeting. CEO and Executive Director, Tyler Dupy, discussed KCA and its work for independent cattle producers. He also discussed projects in the pipeline for KCA and answered attendee questions.



Linden Stueve with Copeland Insurance discussed the new State Auto Indemnity Program and Partnership with KCA. Through the program, members of KCA are potentially eligible to receive a dividend back for their State Auto farm and ranch coverage, at no extra cost.

This event was made possible by these generous sponsors: Goode Ranch, Mills Cattle, PrairieLand Partners, Flyin' 3 Veterinary Service, Idexx Laboratories, RCB Bank, SEK Genetics, Eureka Livestock Sales, Family Tree Meats, Prairieland Vet Services, Mills Feed & Supply, Howard State Bank, State Auto Farm & Ranch Insurance, WaterTight Roofing, R-Bar Cattle Co. - Ronnie & Wah-Leeta Rogers, Jacot Ranch, and Steen Lister Livestock Transportation.

Board of Directors

Shawn Mills
President

Grenola, KS
(620)205-8100
shawntmills@gmail.com

Perry Owens
Vice President

(785)392-2184
Minneapolis, KS
ocfi@nckcn.com

Greg Davis
Sec./Treasurer

Madison, KS
(620)340-9534
ranchlandfeeds@gmail.com

Dave Murphy
Emporia, KS

(620)481-9607
davemurphy1720@gmail.com

Tony Anderson
Farlington, KS

(620)362-3238
tylertammytony@gmail.com

Pete Fish
Cosby, MO

(816)289-6168
prfish728@gmail.com

Nicole Pfrang
Goff, KS

(785)285-1066
nicpfrang@gmail.com

Andy Miller
Fall River, KS

(620)289-6168
andymiller2004@gmail.com

Contact KCA

725 N. Washington St.
Junction City, KS 66441

Phone 785-238-1483

Fax 785-238-1518

kansascattlemen.com

cowsrus@kansascattlemen.com



110060188216

@kansascattlemen

KCA To Host Regional Meeting in McPherson, KS June 5

Kansas Cattlemen's Association (KCA), in partnership with PrairieLand Partners-John Deere, will host a regional cattlemen's meeting in McPherson, Kansas to discuss industry topics on the evening of June 5, 2018 at 6:00pm. The meeting will take place at the PrairieLand Partners dealership. The meeting will include presentations by Dr. Justin Smith, Kansas Animal Health Commissioner, and Craig Kerbs, SmartLic. The presentations and meal are free and open to the public. KCA will provide a presentation on organization information.

Craig Kerbs with SmartLic, will present "Competition, the Silent Killer". Kerbs will demonstrate how to identify signs that cattle do not have proper access to essential minerals. Concerns of over-crowding of mineral feeders, insufficient number of mineral feeders and salt blocks, and the signs to look for that indicate it is time to make a change or seek expert advice with mineral feeding.



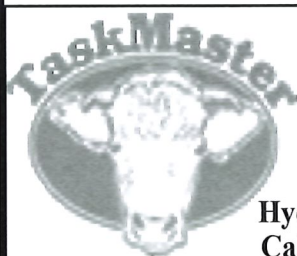
Dr. Justin Smith

Dr. Smith replaced Dr. Bill Brown as Animal Health Commissioner in May 2017. He has been a valuable part of the agency, leading the animal disease control team, helping organize and execute foreign animal disease preparation efforts, and engaging industry in the work of the division along with many other duties. Prior to coming to KDA as a field veterinarian in 2011, Smith managed a western Kansas ranch, worked as a private practicing veterinarian and as a livestock Extension agent.

The animal health commissioner serves as the executive officer of the KDA Division of Animal Health, overseeing the agency's three program areas: disease control and traceability, animal facilities inspections and brands, all of which work to ensure the health and welfare of Kansas livestock and domestic animals.

KCA is actively supporting independent producers in Topeka and Washington, D.C. Our staff will update attendees on current legislative work.

The meeting includes a free USA beef brisket dinner prepared by Meat Rubbers BBQ and Catering. To help ensure enough of the meal for everyone, please RSVP to 785-238-1483.



Luco Mfg. Co.

Hydraulic Chutes ~ Working Circles
Cake Feeders ~ Continuous Fencing
Panels & Gates

See Us at www.lucoinc.com
1-888-816-6707

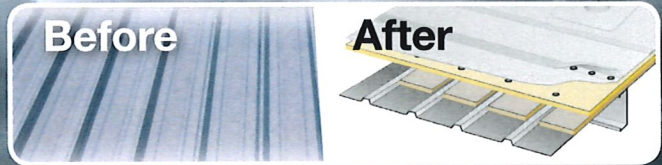


WATER TIGHT ROOFING

COOLER COWS ARE HAPPIER COWS!

Elastomeric Coating

Single Ply Membrane



Claus Dairy Farm Dalhart



Centramatic

**No tear off and no disruption
to your production.**



"This was a very clean operation. It didn't cost more or take longer. They did exactly what they said they would do."

Dyke Rogers
Owner - CDFD



Serving Kansas, Texas, and Oklahoma



"WaterTight's commitment to excellence is just that - WaterTight!"

Larry Easley
Storage Management Associates, Inc
TSSA Board of Directors 2012-2015

888-809-9976

www.watertightroofinginc.com



Message from the President.....Shawn Mills

It is an honor to be selected by my fellow board members to serve as KCA President this year. I look forward to continuing the great work that KCA does for the independent cattle producers of Kansas.

today's cattle production and can have a significant effect on your herd.



I would like to thank everyone that took the time to attend the KCA regional meeting in Moline at the beginning of the month. If you haven't had the opportunity to hear Dr. Coover speak, I recommend attending a future presentation with him. The information he provides is relevant to

As we go through the next year, I urge everyone to get involved with KCA by attending regional meetings, joining a policy committee, calling on your legislators in support of Kansas cattle producers, and finally by attending the annual meeting and convention in November. It is our influence as cattle producers that encompasses everything that is KCA. We are stronger when our voice is of the many and not just a few.

Until Next Time,
Shawn Mills

The best kept secret in the feed business!



...has reduced pulls and death loss by more than 50% and also reduced antibiotic costs by more than 75%...

Make an impact on your operation.

IMPACT+DRENCH

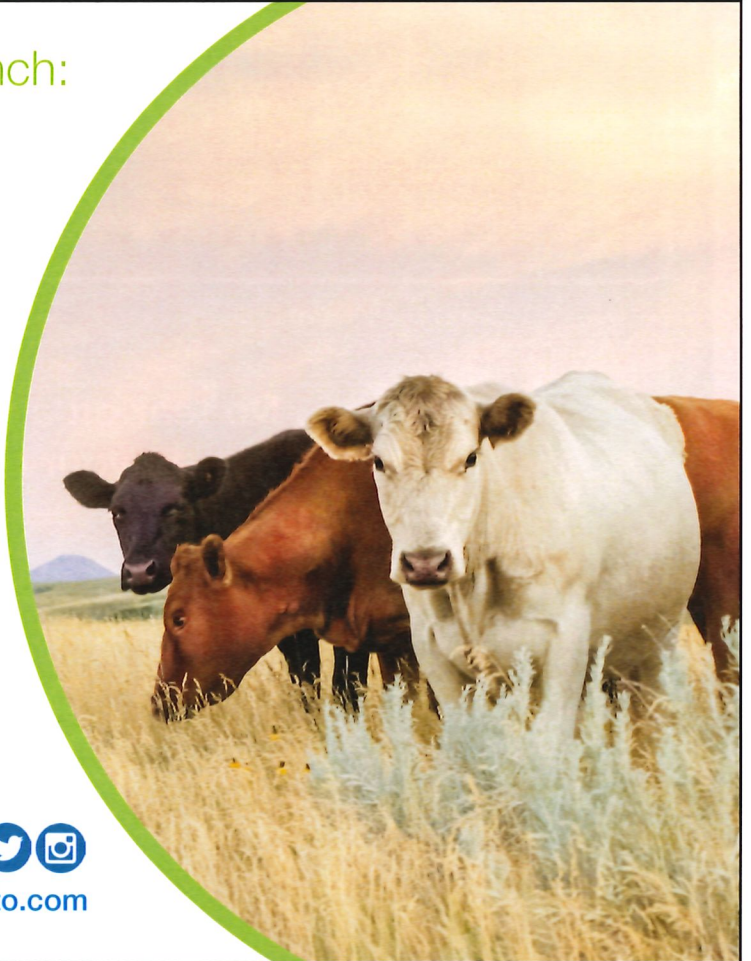
PROBIOTIC / ENZYME / NUTRITIONAL DRENCH

Steve Garton - 620- 664-0252 Derrick England - 785-263-6488

You value two things on your ranch: time and money.

At State Auto, we make it easy to get the right coverages at a competitive price. We have over 80 years of farm and ranch expertise. Your time is important and we know that. As a Kansas Cattlemen's Association member, you'll get exclusive benefits such as specialized coverages, competitive pricing and dividend potential.

Protect what matters most... your family and your farm. Our agents are your friends and neighbors, they get to know you and your ranch. To find a local agent, visit StateAuto.com/FindAnAgent.





Cattle First.

You may only have them a short time.
**BUT YOUR *commitment* IS
 LONG-TERM.**

**That's Why You Need LongRange® (eprinomectin)
 For Up To 150 Days Of Parasite Control.¹**

Looking out over your herd, the sight is full of potential. But if you used a short-term dewormer like Cydectin® (moxidectin) or Dectomax® (doramectin) on your stockers, you're not getting the most out of your pasture. That's because cattle were probably reinfected with parasites just halfway through the grazing season.

Only LONGRANGE delivers true season-long control.¹

40 lbs.

In just 104 days, LONGRANGE steers gained 40 lbs. more over those treated with CYDECTIN + SAFE-GUARD (fenbendazole).²

Out here, there is no time for shortcuts. This year, think LONGRANGE.

theLONGRANGElook.com

Caution: Federal law restricts this drug to use by or on the order of a licensed veterinarian. Warnings and Precautions: For use in cattle only, not for use in humans or other animal species. Keep out of reach of children. Not for use in breeding bulls, or in calves less than 3 months of age. Not for use in cattle managed in feedlots or under intensive rotational grazing. Not for use in female dairy cattle 20 months of age or older, including dry dairy cows, or in veal calves. Post injection site damage (e.g., granulomas, necrosis) can occur; these reactions have disappeared without treatment. Not for intravenous or intramuscular use. Do not underdose. Do not treat within 48 days of slaughter.



Available in 500 mL, 250 mL and 100 mL bottles. Administer subcutaneously at 1 mL/110 lbs.



¹Dependent upon parasite species, as referenced in FOI summary and LONGRANGE product label.
²Results based on actual on-farm comparative demonstration. Individual herd results may vary. Data on file at Boehringer-Ingelheim. Consult with your veterinarian to discuss expectations for your operation.
 Merial is now part of Boehringer Ingelheim. LongRange and the Cattle Head Logo are registered trademarks of Merial. All other marks are the property of their respective owners.
 ©2018 Boehringer Ingelheim Vetmedica, Inc. B0V-1129-ANTH0418

785-238-1483

KCA Board of Directors Welcomes New Members-Elects New Officers

The Kansas Cattlemen's Association (KCA) Board of Directors annual transition took place during the April board meeting. KCA membership voted in November 2017 for members Greg Davis, Nicole Pfrang, and Andy Miller to replace Alan Stewart, Landon Shaw, and Spencer Crowther at the expiration of their three-year terms on the board. Stewart previously served as President.

his wife, Carla. They have one son, Sam, who currently attends Kansas State University. Davis grew up on a ranch in Texas, and attended college there before going to work for Iowa Beef Processors. After a 20-year career with IBP, and eventually Tyson, the division Davis worked for closed in Emporia, and the family was reluctant to move. They stayed in Kansas,

Andy Miller is a multi-generational rancher residing in Wilson county, Kansas north of Fredonia. He runs a cow/calf operation, backgrounding and preconditioning yard, as well as custom hay bale business, producing over 3,500 rounds per year. He and his wife Patty have two children: Allison, 16, and Wyatt, 13.



L-R: Spencer Crowther, Alan Stewart, Landon Shaw following April Board Meeting

where Davis runs his feed and seed business as well as a livestock operation

Nicole Pfrang, a rancher in Nemaha county, is a recent graduate from Kansas State University with her bachelors of science in Animal Science – Production Management. Pfrang grew up on her family's ranch with her parents David and Ginny. She has been a KCA fixture, having attended nearly all of the conventions, and often volunteers with KCA events across the state.

Greg Davis runs RanchLand Feed, LLC, an ADM distributor, in Greenwood county. He resides there with

ly's ranch with her parents David and Ginny. She has been a KCA fixture, having attended nearly all of the conventions, and often volunteers with KCA events across the state.

LONGRANGE (epinomectin) Extended-Release Injectable Parasiticide: 5% Sterile Solution, NADA 141-327, Approved by FDA for subcutaneous injection. For the treatment and control of Internal and External Parasites of Cattle on Pasture with Persistent Effectiveness. CAUTION: Federal law restricts this drug to use by or on the order of a licensed veterinarian. INDICATIONS FOR USE: LONGRANGE, when administered at the recommended dose volume of 1 mL per 110 lb (50 kg) body weight, is effective in the treatment and control of 20 species and stages of internal and external parasites of cattle.

Gastrointestinal Roundworms	Lungworms	Parasites	Durations of Persistent Effectiveness
<i>Bunostomum phlebotomum</i> – Adults and L ₁	<i>Dicrocoelium viviparus</i> – Adults	<i>Bunostomum phlebotomum</i>	150 days
<i>Cooperia oncophora</i> – Adults and L ₁		<i>Cooperia oncophora</i>	100 days
<i>Cooperia punctata</i> – Adults and L ₁		<i>Cooperia punctata</i>	100 days
<i>Cooperia sumabata</i> – Adults and L ₁		<i>Haemonchus placei</i>	120 days
<i>Haemonchus placei</i> – Adults	Grubs	<i>Oesophagostomum radiatum</i>	120 days
<i>Oesophagostomum radiatum</i> – Adults	<i>Hypoderma bovis</i>	<i>Ostertagia lyrata</i>	120 days
<i>Ostertagia lyrata</i> – Adults		<i>Ostertagia ostertagi</i>	120 days
<i>Ostertagia ostertagi</i> – Adults, L ₁ , and inhibited L ₁	Mites	<i>Trichostrongylus axei</i>	100 days
<i>Trichostrongylus axei</i> – Adults and L ₁		Lungworms	
<i>Trichostrongylus colubriformis</i> – Adults	<i>Sarcoptes scabiei</i> var. <i>bovis</i>	<i>Dicrocoelium viviparus</i>	150 days

DOSE AND ADMINISTRATION: LONGRANGE® (epinomectin) should be given only by subcutaneous injection in front of the shoulder at the recommended dosage level of 1 mg epinomectin per kg body weight (1 mL per 110 lb body weight).

WARNINGS AND PRECAUTIONS

Withdrawal Periods and Residue Warnings

Animals intended for human consumption must not be slaughtered within 48 days of the last treatment. This drug product is not approved for use in female dairy cattle 20 months of age or older, including dry dairy cows. Use in these cattle may cause drug residues in milk and/or in calves born to these cows. A withdrawal period has not been established for pre-ruminating calves. Do not use in calves to be processed for veal.

Animal Safety Warnings and Precautions: The product is likely to cause tissue damage at the site of injection, including possible granulomas and necrosis. These reactions have disappeared without treatment. Local tissue reaction may result in trim loss of edible tissue at slaughter. Observe cattle for injection site reactions. If injection site reactions are suspected, consult your veterinarian. This product is not for intravenous or intramuscular use. Protect product from light. LONGRANGE® (epinomectin) has been developed specifically for use in cattle only. This product should not be used in other animal species.

When to Treat Cattle with Grubs: LONGRANGE effectively controls all stages of cattle grubs. However, proper timing of treatment is important. For the most effective results, cattle should be treated as soon as possible after the end of the heel fly (warble fly) season.

Environmental Hazards: Not for use in cattle managed in feedlots or under intensive rotational grazing because the environmental impact has not been evaluated for these scenarios.

Other Warnings: Underdosing and/or subtherapeutic concentrations of extended-release anthelmintic products may encourage the development of parasite resistance. It is recommended that parasite resistance be monitored following the use of any anthelmintic with the use of a fecal egg count reduction test program.

TARGET ANIMAL SAFETY: Clinical studies have demonstrated the wide margin of safety of LONGRANGE® (epinomectin). Overdosing at 3 to 5 times the recommended dose resulted in a statistically significant reduction in average weight gain when compared to the group tested at label dose. Treatment-related lesions observed in most cattle administered the product included swelling, hyperemia, or necrosis in the subcutaneous tissue of the skin. The administration of LONGRANGE at 3 times the recommended therapeutic dose had no adverse reproductive effects on beef cows at all stages of breeding or pregnancy or on their calves. Not for use in bulls, as reproductive safety testing has not been conducted in males intended for breeding or actively breeding. Not for use in calves less than 3 months of age because safety testing has not been conducted in calves less than 3 months of age. **STORAGE:** Store at 77° F (25° C) with excursions between 59° and 86° F (15° and 30° C). Protect from light. Made in Canada. Manufactured for Merial, Inc., Duluth, GA, USA. ©The Cattle Head Logo and LONGRANGE are registered trademarks of Merial, Inc. ©2015 Merial, Inc. All rights reserved. 1050-2889-06, Rev. 2/2015, 8LON016C

The board re-elected Perry Owens as Vice President. It will be Owens' third term as Vice President. Greg Davis was elected Secretary/Treasurer. Davis will serve his first term as Secretary/Treasurer, replacing three-term Secretary/Treasurer, Landon Shaw. The board selected Shawn Mills as the new President to replace Alan Stewart.

Mills joined the KCA Board of Directors in April 2016. A life-long Kansan, Shawn was born into the cattle industry in Moline, Kansas. He currently resides in Elk County and is married to his wife Dana. Together, they have two young sons, TJ and Emery ages 10 and 8. Shawn is a leader of the Moline Community Shining Star 4-H Club, where his family is involved. At home on the ranch, Shawn operates a cow/calf herd, that specializes in two-year heifer/calf pair replacements and breed development. Shawn also works with Eureka Livestock Sales as a fieldman.

Nominees to the Board of Directors are received during the KCA Annual Business meeting. Nominees are then elected via mail-in ballot by the membership. Directors serve three-year terms. Executive committee members are elected each year in April.

Hey America! Beef Up! No. 21

**Solve Trade Disputes with
“Win-Win” Economic Benefit-Restore
The American System of Economics**
By Robert L. Baker

(April 30)—President Trump has called the question on foreign trade, but the answer lies—not in hopeless ‘who wins, who loses’ disputes—but in the domain of principle concerning, how do we develop our economy, and work with others to do likewise. Our farm and food systems are urgently in need of emergency measures. There are three aspects to consider for essential background. First, our own agriculture system has been ‘de-structured,’ that is, progressively downgraded for nearly 50 years. We need to reverse that. Secondly, China, since 1978 (the start of its “reform period”) has progressively re-structured its agriculture and food system to higher and higher levels. Thirdly, we should determine trade based on the reality of these situations, which also goes for trade in all other categories of economic activity, from industrial to medical and technological, and for trade between other nations, not just the U.S. and China.

U.S. Farm / Food System “De-structured”

Since approximately the 1970s—the period when “de-regulation” was pushed strongly throughout the U.S. economy by the casino-type financial circles, for transportation, health care, etc.—policies have been introduced to undercut agriculture. That is, to structurally downgrade the condition of farming and the food chain. The principle of sovereign responsibility for farming and the food supply was set aside, in favor of Wall Street-serving practices of commodity speculation, out-sourcing key parts of the food supply, and blocking any provision of fair, parity-based, prices for the farmer's output.

We all know how this was sold to farmers and ranchers. It was asserted that “risk management” and insurance were the more modern ways to deal with uncertainty than traditional parity-based pricing, production management, and such measures, despite the fact that those measures had succeeded so well during WW II, in Lend-Lease and up through the 1960s, when a farmer could still support a household by farming. We were told that we had to back “demand-side” programs, like biofuels, to prop up corn and soybean prices. We were told that we had to back “free trade” so we could prop up prices by selling corn and soybeans to China and elsewhere, whether they wanted to buy it or not. Our fruit and vegetable growers were told, “Too bad,” when these operations were financed by Wall Street to move to Mexico, Southeast Asia and Africa. We are also told by Wall Street: no more money for infrastructure—not for disaster defense, upkeep on the waterways, nor a modern rail system. We and our fellow citizens stood back and let it happen.



“They claim to be super-patriots, but they would destroy every liberty guaranteed by the Constitution. They demand free enterprise, but are the spokesman for monopoly and vested interest. Their final objective, toward which all their deceit is directed, is to capture political power so that, using the power of the state and the power of the market simultaneously, they may keep the common man in eternal subjection.”

by Henry A. Wallace, 33rd Vice-President and 11th Secretary of Agriculture of the United States

Now we look around. Farm counties have been de-populated; infrastructure is decaying; and rural areas suffer from high rates of poverty, suicide, and drug abuse. The average farm family must depend on off-farm jobs, to continue to farm, while losing money.

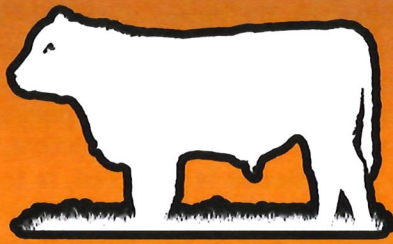
Figure out Win-Win Trade

China made some good-will trade commitments with the U.S. in November, 2017, that included, in agriculture, Montana-brand beef for internet sales in China; and tons more imports of U.S. soybeans. These deals—along with many other trade categories, are now in question, because of the flap over trade, whose passion is fanned by the political side of the Wall Street/City of London crowd, who want to continue their loser system. In fact, we can work things out with China and with every other nation. We should proceed by deciding what serves the win-win interests involved. That means tackling our own mess at home, beginning with emergency measures for the farm sector. It also means organizing credit for infrastructure-building, for which we can proceed by reinstating Glass Steagall, and creating a national infrastructure and credit bank. Get back to tried and true.

South Dakota Rancher Throws Hat in the Ring Calls for LaRouche's Four Economic Laws

In April, a prominent cattleman in South Dakota declared his bid to run for the state's one seat in the U.S. House of Representatives, on exactly that approach. Rancher Ron Wiczorek, who runs a Charolais breeding herd in Davison County, filed as an Independent. Saying, “I'm a Roosevelt Democrat and an Abraham Lincoln Republican,” Wiczorek said that, our problem today is a financial system that is, “based on speculation, usury and gambling, rather than productivity and building infrastructure.” He calls for implementing LaRouche's Four Economic Laws, for reinstatement of Glass Steagall, and an end to the “British free trade” system, which he says has resulted in, “the destruction of agriculture and laboring people in the United States...” He filed nearly 4,000 signatures for ballot status, which came from volunteer petitioners backing his stated ideas to return to the “American political economic system that promoted production agriculture and the uplifting of human beings with a classical education, teaching our young people how to solve problems in the school system, educating their subconscious, instead of turning them into fodder for these predatory capitalists as cheap labor...”

*By Robert L. Baker, Agricultural Research
Specialist, Executive Intelligence Review,
www.larouchepub.com*



GOBOB

PIPE & STEEL

HAY TRAILERS FOR EVERY NEED!

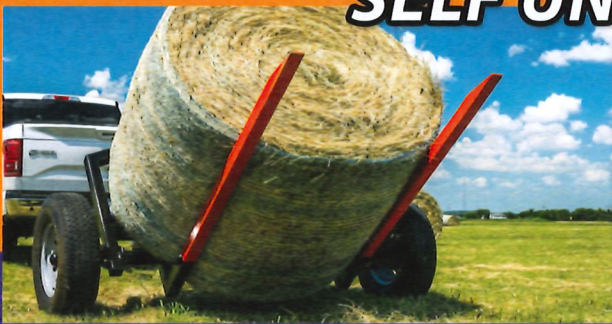


RED RHINO Trailers

THE BEST TRAILERS BUILT, PERIOD.



SELF UNLOADING



ECONOMY



HIGH CAPACITY



facebook



OFFICIAL SUPPLIER

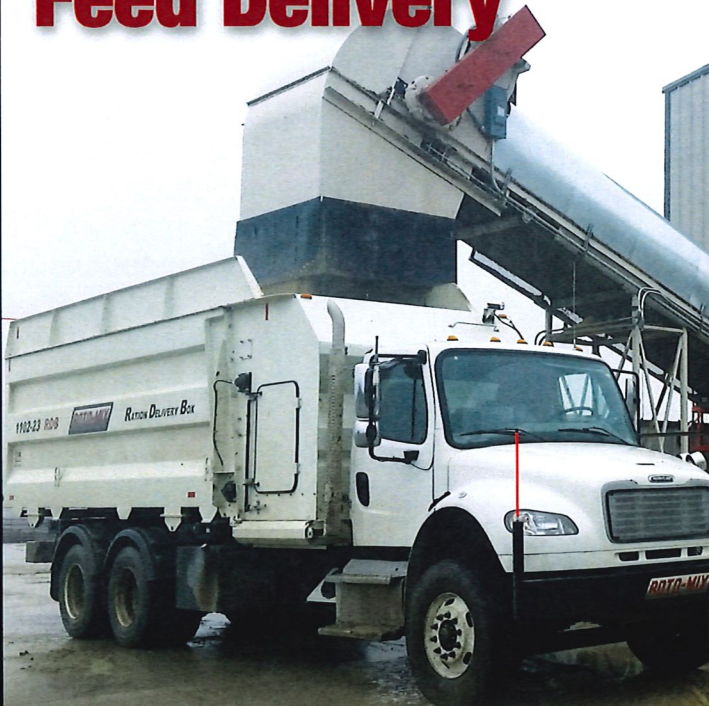


844-304-4779

GobobCattlemen.com



Commercial Feed Delivery



Two Better Ways to Deliver Rations



Ration Delivery Box

- Rubber belt floor
- 1100-1200 cu. ft. capacity
- 48" wide stainless steel conveyor body unloads at high speeds

Commercial Feeder Box

- Choice of Two or Three Separate Sets of Chain and Slat Floor
- 760-1900 cu. ft. capacity
- Conveyor unloading for bunks or rear unloading for feed mill commodities

You'll recognize us by our look.* You'll remember us for our quality!
* Smooth sided 3 panel look is a registered trademark of FSI Fabrication, LLC.



www.rotomix.com 620.225.1142



SWIHART
Sales Company
- Mist Sprayers -

Excellent for spraying cattle, nurseries, vegetables, vineyards, orchards, Christmas Trees, livestock, mosquitos, chicken houses, etc.
American Made



References available in your area
Low Maintenance • High Performance • FREE Shipping

S.I. Feeders

Swihart Sales Company
7240 County Road AA, Quinter, KS



785-754-3513 or 800-864-4595
www.swihart-sales.com

CATTLE MATS WITH PROVEN PREVENTION

Non-slip and durable cattle mats from Double D Mats make unforgiving surfaces comfortable for all your cattle.



please contact us

p. 1.888.377.2879
w. DoubleDMats.com

Health * Life * Investments * Senior Plans

Jim Phillips

"Where Service is #1 Priority"

(785) 945-3610
(800) 373-9559

(620) 727-3883 Mobile
Valley Falls, KS 66088-0160

USDA Seeks Comments on Proposed Rule for National Bioengineered Food Disclosure Standard

May 3, 2018 – The U.S. Department of Agriculture today invited public comment on the proposed rule to establish the National Bioengineered Food Disclosure Standard mandated by Congress in 2016. The standard will provide a uniform way to offer meaningful disclosure for consumers who want more information about their food and avoid a patchwork system of state or private labels that could be confusing for consumers and would likely drive up food costs.

“This rulemaking presents several possible ways to determine what foods will be covered by the final rule and what the disclosure will include and look like,” said Agriculture Secretary Sonny Perdue. “We are looking for public input on a number of these key decisions before a final rule is issued later this year.”



The proposed rule is open for comment for 60 days. Due to the Congressionally mandated time-line for this rule-making, the comment period will not be extended, so it is important that anyone interested file comments in a timely manner.

Comments may be submitted online through the Federal eRulemaking portal www.regulations.gov. Comments may also be filed with the Docket Clerk, 1400 Independence Ave., SW, Room 4543-South, Washington, DC 20250; Fax: (202) 690-0338.

The deadline for comments is July 3, 2018.

The National Bioengineered Food Disclosure Standard Law was enacted by Congress on July 29, 2016. The proposed rule previewed in the May 3, Federal Register.

CIA COPELAND INSURANCE AGENCY

**MANHATTAN - ABILENE - JUNCTION CITY - KANSAS CITY
MARYSVILLE - RILEY - SALINA - TOPEKA - WAMEGO
WE ARE A STATE AUTO LICENSED AGENCY
SERVICING ALL OF KANSAS**

**OUR AGENCY CREATED THE FARM DIVIDEND PROGRAM WITH
YOUR NEEDS IN MIND**

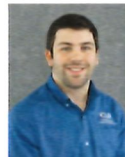
CONTACT US TODAY AND SEE IF STATE AUTO IS A GOOD FIT FOR YOUR OPERATION



JAY COPELAND
785-410-5509



LANCE SHARP
785-656-2686



LINDEN STUEVE
620-794-8359



MIKE SPOHN
785-210-6155

**Specializing in innovative risk management strategies for farmers and
commercial agriculture!**

www.copelandins.com

www.kansascattlemen.com

Schedule of Events

- June 5** **Regional Meeting**
McPherson, Kansas
- July 20 - 22** **Four State Farm Show**
Pittsburg, Kansas
- August 7** **Primary Election**
- November 6** **General Election**
- November 9** **KCA Annual Membership Meeting**
- November 9-10** **KCA Annual Convention**
Newton, Kansas


Thank you for your Membership

- | | |
|-----------------------------|----------------------|
| John Jacot | David Scott |
| Lyle Katz | Richard Sailors |
| Joe Myers | Don Coover, DVM |
| Kenneth Dawson | Michael Vandevord |
| Dale Goetz | Brian Bitter |
| Steve Reinhardt | Mark Berry |
| Rod Durler | Jim Kissel |
| Brad Haun | Brian Hastings |
| Superior Livestock Auctions | Lester Laue |
| Michael Hoover | Larry Manhart |
| Mike Steinlicht | Tyrone Kamphaus |
| Marvin Strube | Dan & John Rempe |
| Robert Heiman | Warren Schepmann |
| Steven Schild | David Peterson |
| Darwin Deets, DVM | Darrel Nagel |
| Douglas Edelman | Randy Bunnel |
| Paul Hambelton | Holopirek Cattle Co. |



Offering a CHOICE of companies and risk management solutions tailored to fit YOUR needs since 1947

215 N. Main Garden City, KS 800.633.0746	KFSA AGENCY <i>More Than Just Insurance!</i>	1515 E. 30th Ave. Hutchinson, KS 800.362.2104
--	---	---



DIRKS EARTHMOVING
Scott City, Kansas

Dams ~ Site Prep ~ Land Leveling
~ Feedlot Construction ~ Terraces ~

Richard Dirks
770 W. Rd 270, Scott City, KS 67871
620-872-1793



AGRICULTURAL ENGINEERING ASSOCIATES, INC.

John A. George, P.E.
Chief Engineer

1000 Promontory Drive PO Box 4 Uniontown, KS 66779 johng@agengineering.com	P 620-756-1000 C 620-704-9122 F 620-756-4600
---	--

MIX 30™
THE HIGH ENERGY "ALTERNATIVE" LIQUID FEED

COW-CALF GRASS CATTLE CALF-CREEP GRAINS	STARTING CATTLE FINISHING CATTLE DAIRY CATTLE MIXES
--	--


Contact us for information, pricing, or for the location of a dealer near you.

Call us Today at 800-575-7585



1374 Horned Owl Road
Horton, KS 66439
785-486-3302
Fax 785-486-3990
800-615-0299
www.naturs-way.com

Dan Haverkamp
Producers of MSE
Direct Fed Microbial
for livestock



900 N. Washington St.
Abilene, KS 67410

(785) 263-3436
Fax (785) 263-3101
mary.rawhide@gmail.com
www.rawhideportablecorral.com

Rawhide Portable Corral & Livestock Equipment

**1 Person
No Lifting
10 Minutes**



Kansas Cattlemen's Association
725 N. Washington St. Ste. B
Junction City, KS 66441

Presorted Standard
U.S. Postage
PAID
Permit No 79
Manhattan, KS 66502
Return Service Requested

-- KCA Feed Yards --

Support KCA and the Independent Producer
Contact a KCA Feed Yard today

Double B&S Cattle Co.
Mike Bartlett
Fowler, KS
(620) 885-4558

Ford County Feed Yard
Danny Herrmann
Ford, KS
(620) 369-2252

Hoxie Feed Yard
Scott Foote
Hoxie, KS
(785) 386-4519

Ottawa County Feeders
Perry Owens
Minneapolis, KS
(785) 392- 2184

Learn more about these fine KCA feed yards on the KCA website!

THIRTY **30** SERIES

HYDRABED

from
TRIPLE C
INC

**VISIT OUR WEBSITE TO
FIND A DEALER NEAR YOU!**

902 Highway K246 - Sabetha, KS 66534 | Toll Free: 800-530-5624 | 785-284-3674 | www.triple-c-inc.com