

KCA News

KANSAS CATTLEMEN'S ASSOCIATION

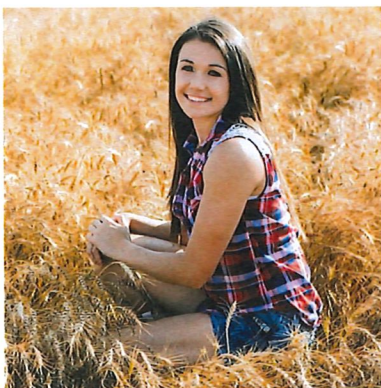
June 2018

KCA & GoBob Pipe & Steel Announce Scholarship Program Recipients

The Kansas Cattlemen's Association (KCA) and GoBob Pipe & Steel Scholarship Program recently awarded scholarship offers for 2018. Applicants were required to submit a completed application form detailing their secondary education plans, focus of future study, a formal resume as well as an essay of 250-500 words covering one of three topics. Those topics ranged from the value of beef or protein in a well-balanced diet, the value of independent cattle producers in their community and how the lack of effective market competition has affected independent cattle marketing.

KCA received forty applications from highly qualified scholars. We were pleased to see that students today are doing some really amazing things, achieving exceptional academic success, and building promising futures for themselves and their generation. After careful consideration and review, the KCA Board of Directors offered six scholarship awards. All non-awardees were also offered a complimentary membership to KCA for a year.

Chelsey Bieberle, Bushton, daughter of Jerry and Audria



Bieberle has been awarded a \$400 scholarship. Chelsey intends to continue pursuing a degree in Feed Science and Management at Kansas State University this fall. She attributes her work ethic and responsibility to her parents and their mentorship as she began working around the farm as a youngster. She

dedicates time and community service as a member of Sigma Alpha, Feed Science Club and the Pre-Vet Club at K-State, Hands On K-State and is a member of the National Society of Collegiate Scholars. Chelsey currently works in the K-State Vet Diagnostic Lab assisting lab workers as well as working for her family at Bieberle Farms.

Jaylenn Pfeifer, Ellis, daughter of Sheldon and April Pfeifer has been awarded a \$400 scholarship. Jaylenn plans to attend Fort Hays State University in the fall to pursue a degree

in Agricultural Communications. Her accolades include Miss



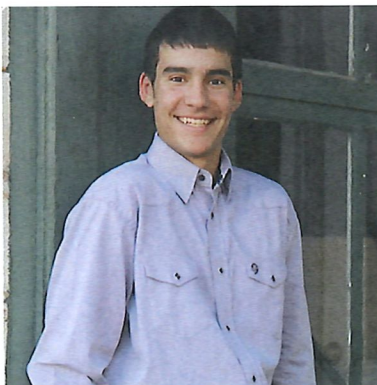
Teen Rodeo Kansas 2018, Ambassador for Ellis County 4-H, 4-H Equine Instructor, NW District FFA Officer. Jaylenn continues to work as a show hand and groomer for Harvest Moon Show Cattle of Ellis.

Melanie Robbins, Yates Center, daughter of Lee and Janet



Robbins has been awarded a \$400 scholarship. Melanie plans to attend Allen County Community College in the fall to pursue a degree in Cattle Management/Production, majoring in Animal Science. She has credited her community relationships with independent ranchers of Woodson

County with her aspiration to return to Woodson County as a cattle producer in the future. She served three years as the Class of 2018 Student Council Representative while also dedicating her time to Art for the Heart, Fellowship of Christian Athletes, Eager Beavers 4-H Club, Woodson County 4-H Council and the National Art Honor Society. Melanie continues to work as a ranch hand for JL Angus Ranch of Yates Center.



Samuel Davis, Madison, son of Greg and Carla Davis has been awarded a \$300 scholarship. Sam will continue pursuing his degree in Animal Science and Industry (Production Management Option) at Kansas State University this fall. He enjoys

Board of Directors

Shawn Mills

President

Grenola, KS

(620)205-8100

shawnmills@gmail.com

Perry Owens

Vice President

(785)392-2184

Minneapolis, KS

ocfi@nckcn.com

Greg Davis

Sec./Treasurer

Madison, KS

(620)340-9534

ranchlandfeeds@gmail.com

Dave Murphy

Emporia, KS

(620)481-9607

davemurphy1720@gmail.com

Tony Anderson

Farlington, KS

(620)362-3238

tylertammytony@gmail.com

Pete Fish

Cosby, MO

(816)289-6168

prfish728@gmail.com

Nicole Pfrang

Goff, KS

(785)285-1066

nicpfrang@gmail.com

Andy Miller

Fall River, KS

(620)289-6168

andymiller2004@gmail.com

Contact KCA

725 N. Washington St.

Junction City, KS 66441

Phone 785-238-1483

Fax 785-238-1518

kansascattlemen.com

cowsrus@kansascattlemen.com



110060188216

@kansascattlemen

Scholarship Recipients Continued from Page 1

competing as a member of the K-State Meat Judging Team, serving as a student board member of the Kansas Junior Livestock Show Board of Directors as well as a club member and advocate for the K-State Collegiate Farm Bureau. Sam currently works as a Livestock Manager for the K-State Sheep and Goat Unit and as Feed Delivery/Warehouse Maintenance staff for RanchLand Feed of Madison.

Jade Edwards, Hamilton, daughter of DJ and Arlene Edwards has been awarded a \$300 scholarship. Jade plans to attend Oklahoma State University this fall to pursue a double major in Agriculture Education and Animal Science. She hopes to have a chance to return to her home county as an Ag Teacher, so she may foster and prepare future generations of agriculturalists in Greenwood County. Jade also hopes to take over the family ranch, Edwards Cattle Company, when the time arises. She has dedicated time and community service as an FFA President and Reporter, 4-H Vice-President, Secretary and Reporter as well



as a member of National Honor Society. Jade continues to work as a ranch hand on both her family's ranch as well as Beeman Backgrounding, Madison.

Alena Pfrang, Goff, daughter of David and Ginny Pfrang, has been awarded a \$300 scholarship. Alena plans to attend Kansas State University this fall to pursue a double major in Applied Mathematics and English Literature. Her accolades include Wetmore National Honor Society Vice-President, Student Council Treasurer, Class Treasurer, Kansas Association for Youth Treasurer and Scholars Bowl, Journalism and Yearbook Staffer, member of Students Against Destructive Decisions: Cardinal Kiddos Program and volunteering for Goff Lions Club activities. Alena's interests include theatre, mathematics, writing and



hopes of studying abroad. She continues to work for Sonic Drive-In and as a farm and ranch hand on the family farm.

KCA would like to thank all of the applicants for taking part in the scholarship program. Also, thank you to Bob Studebaker and GoBob Pipe and Steel for their generous financial support of the scholarship program.



Luco Mfg. Co.

**Hydraulic Chutes ~ Working Circles
Cake Feeders ~ Continuous Fencing
Panels & Gates**

See Us at www.lucoinc.com

1-888-816-6707

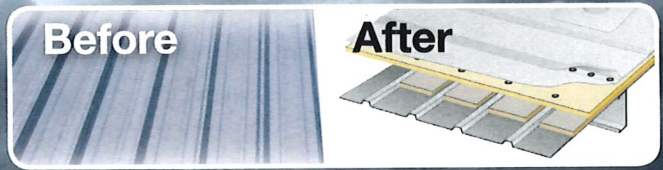
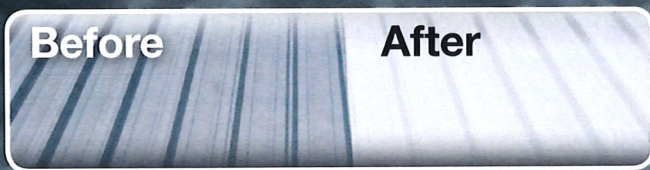


WATER TIGHT
ROOFING

COOLER COWS ARE HAPPIER COWS!

Elastomeric Coating

Single Ply Membrane



Claus Dairy Farm Dalhart



Centramatic

**No tear off and no disruption
to your production.**



"This was a very clean operation. It didn't cost more or take longer. They did exactly what they said they would do."

Dyke Rogers
Owner - CDFD



Serving Kansas, Texas, and Oklahoma



"WaterTight's commitment to excellence is just that - WaterTight!"

Larry Easley
Storage Management Associates, Inc
TSSA Board of Directors 2012-2015

888-809-9976

www.watertightroofinginc.com



Message from the President.....Shawn Mills

It seems like not enough hours in the day! I would like to mention my family is headed out for "summer vacation" to the Maine-Anjou Jr. Nationals in Grand Island, NE. A week full of learning activities & contests for the youth. Taking 2 heifers and 2 steers to show.

The rains have been very spotty, but we are fortunate to have gotten some and grass doing very well! The weather across the state has been unforgiving in some areas and relentless in others. Our thoughts and prayers are with our flooded neighbors in the west.

Cattle market seems to be building some strength. A lot of slaughter cows coming to town which will help us down the road. We hopefully will get a farm bill passed in the near future, and see some fairness built into future trade deals with the foreign markets.

Movement on the "Fake Meat" front is being seen in Washington D.C. Big players are pushing millions of dollars of investment into the alternative protein markets. We need a big win here with the labeling. We cannot permit this impostor food to be labeled as beef.

With 4th of July coming up grill some USA Beef and enjoy with family and friends to celebrate our independence!

Until Next Time,
Shawn Mills



Are You Interested in saving money?

KCA members are eligible for potential dividends! You could see a return on your insurance premiums.

- State Auto Farm and Ranch offers:
- A local agent
 - Specialized coverages
 - Competitive pricing
 - Dividend potential
 - Expertise with over 80 years writing farm insurance

Visit StateAuto.com/FindAnAgent to find a local agent and learn more.



This brochure is intended for general information purposes only, and is not an insurance policy. Eligibility, coverages, discounts, exclusions and benefits may vary by state. Coverages described are subject to definitions, limitations, exclusions and conditions. Please read the policy forms and endorsements for details.

Animal Health Commissioner Provides Updates During KCA Regional Meeting

Independent cattle producers gathered together at PrairieLand Partners-John Deere in McPherson, Kansas for a Kansas Cattlemen's Association regional industry meeting on June 5th, 2018. KCA industry policy topics were reviewed, Dr. Justin Smith presented an update on the Animal Health Department's activities, and Craig Kerbs provided valuable information on animal nutrition.

Tyler Dupy, KCA Executive Director, briefly reviewed policy topics KCA is currently focused on, including: Meat (Protein) Alternatives, the 2018 Farm Bill, Country of Origin Labeling, Beef Check-off Redirection and Reform, and the Food Safety Modernization Act.

"Although the Kansas Legislature is now out of session, there is plenty going on at the federal and regulatory levels that require our attention. Producer involvement and awareness with these issues is critical to maintain the effectiveness of our responses. We certainly appreciate the producers taking the time to come out to the regional meeting in McPherson," Dupy stated.

Dr. Justin Smith, Kansas Animal Health Commissioner, discussed the Kansas Animal Health Organization, and the various areas of the department that provide critical services to producers. These areas include the Brands Program and the Livestock and Brand Investigation Unit, Secure Food Supply Plans, and the Animal Facilities Protection Program. Smith also reviewed statistics of Animal Disease Control as well as Animal Disease Traceability.

Dr. Smith represented that Kansas is in decent shape relative to other states where disease is concerned. Even still, there are areas of the state affected by Anaplasmosis, Cow-Calf Johne's Disease, Rabies, Bovine Tuberculosis, and Trichomoniasis. Smith discussed how proper preventative measures and a disease response plan helps to keep operations safe and productive.


Craig Kerbs with SmartLic Supplements reviewed Veterinary Feed Directives and Animal Husbandry. Kerbs presented four ways to improve cattle operation bottom lines. The steps involved decreasing animal competition, increasing forage utilization, improving reproduction efficiency, and increasing gains on pasture.

Mike Spohn with Copeland Insurance Agency provided an overview of the State Auto Farm Dividend Program. The meeting included a USA Beef dinner prepared by Meat Rubbers BBQ and Catering.



Proud sponsors of the event included: Allan & Deanna Sents, A5 Western, LLC., Central Prairie Co-Op, Central Livestock, Countryside Feed, LLC., Farmers Alliance Mutual Ins. Co., First Bank Kansas, PrairieLand Partners-John Deere, SmartLic-New Generation Supplements, State Auto Farm & Ranch Insurance, SweetPro Feeds, Te-Pe Oil & Gas, WaterTight Roofing, and Zeitlow Distributing Company. Numerous door prizes were donated by Key Feeds, Tractor Supply Co., and Orscheln Farm & Home.

The best kept secret in the feed business!



Liquid+
FEEDS

...has reduced pulls and death loss by more than 50% and also reduced antibiotic costs by more than 75%...

Make an impact on your operation.

IMPACT+DRENCH

PROBIOTIC / ENZYME / NUTRITIONAL DRENCH

Steve Garton - 620-664-0252

Derrick England - 785-263-6488

Hey America! Beef Up!



No. 22

**Wealthy High-Tech
"Astronaut" Farmers**



**Create Wealthy Rural Communities
Which Create Wealthy Nations
Wall Street Did Not Make America Great.
The American System of Economics did.
By Robert L. Baker**

Twenty-One Hey America! Beef Up! Articles

The previous 21 monthly issues of "Hey America, Beef-Up!" articles have focused on why our nation must return to the Four American System Economic Principles as discussed by world renowned American System economist Lyndon LaRouche. These principles were discussed historically, to show how the United States rapidly developed early on. How the founding fathers of our nation, Hamilton, Washington, Ben Franklin and others, designed these principles and then, to keep our nation on these American System policies, political battles have been non-stop up to the present fight we see every day in Washington D.C, our nation's capital and the disgusting, low level, mega-media, that covers it.

As the Apollo 13 Astronauts said, "We have a problem, Houston," then heroically solved their life or death problem. Crammed into a little space capsule, they fixed it. Now, we the people must do the same, for our nation. It can only come from the people.

In upcoming articles, the spider-web of rotten financial forces will be exposed to show why U.S. agriculture, manufacturing, business and finance are being monopolized and consolidated faster and faster, while family farming becomes more difficult.

The good news, the solution has started. A massive international economic shift is now happening, especially in Asia, around China's New Silk Road economic development. A show-down between the historic American System polices of production, family farms and human sovereignty vs the old financial empire policy of mega-global-monopolies and low-wage poverty.

Most important, we will discuss why the American population is not pulling together at a very high and profound level. What is it that we are up against? We



should all ask the question, "If you were brainwashed, would you know it." Because it is not human to allow the family farm, the rural communities, cities, schools and health care systems to continue on a slow sort of "controlled disintegration" and not see masses of citizens coming together to stop it. Something is psychologically wrong. As you continue reading, ask yourself, "What is the solution?"

High-Tech Astronaut Farmers Should Mean High Wages and More Family Farmers Not Worker Poverty and Monopolies

The U.S. farm and food sector has been caught in a bad paradox well into the 21st Century. Some of the world's highest technological practices are now found at locations throughout the U.S. food chain--and in Canada and Mexico, from farm fields and barns, to the dinner plate; but at the same time, the overall physical and social organization of agriculture and the food supply has been degraded over decades of the "free" (rigged) trade era, to the point that rural areas are suffering depopulation and poverty. Instead of having prosperous farm counties, with many, many family-scale farms and food processing, and modern transportation, the agriculture sector, over the 1970-2018 half century has trended to mega-farms and livestock operations, controlled in various ways (concentration, commodity speculation, etc.) directly or indirectly, by a small cohort of giant corporations and related banks. Large areas of monoculture--from soybean fields, to apples have come to typify U.S. production. This is not by accident, but by design.

Of the 2.1 million farms in the U.S. (both small and large,) 10 percent produce 77 percent of the value of U.S. farm commodity output (as of 2016.) For example, 40 mega-hog farm operations produce two-thirds of all the pork in the U.S. Half of the raw milk produced in the U.S.

comes from 1,200 mega-milk cow operations. Likewise, food processing is extremely concentrated. Walmart just opened its first directly owned and operated mega-milk processing facility in Indiana. Four cattle slaughtering companies, account for over 80 percent of beef processed.

At the same time, some basic commodity sectors were shifted abroad (frozen and fresh vegetables and fruit,) shutting down whole regions of U.S. farming, while the U.S. became increasingly import-dependent for many foods in the daily diet. Once active local farm communities are now ghost towns, with decaying farmsteads, drug epidemics and high suicide rates. Where there are jobs in the mega-livestock and food processing operations, the pay is low, and conditions harsh, despite some of the world's highest technology in use. Displaced foreign labor--legal or not, is the rule.

This downgrade in physical production has been imposed by financial deregulation of all kinds, in particular, the ending of the concept of "parity" pricing for farmers, which had given security to the public food supply; the furtherance of commodity speculation, and unregulated trade; the ending of anti-trust enforcement, and similar practices. This kind of de-regulation was the inherent nature of the North American Free Trade Act, beginning in 1995, which served to benefit Wall Street, but harm the entire continent. There is no way to make NAFTA "better," while the Wall Street principle governs.

Thus, U.S. agriculture capacity has remained significant in terms of output potential, but degraded in its patterns of production in terms of social and ecological costs. This can all be put right with agriculture policy changes to benefit the population of the U.S., and at the same time, that of Mexico and Canada, and internationally. There is a "win-win" way ahead for agriculture. Three areas of policy are involved.

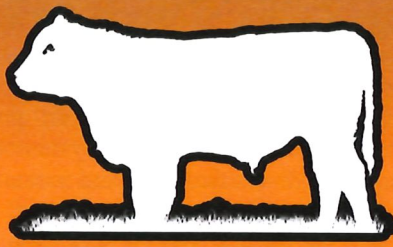
First, continue the advanced scientific and high-technology based practices, that can be called the "astronaut farmer" approach. The name refers in particular, to the use of satellite guidance and data-analysis systems, but more generally to all the R&D applications affecting agriculture production, from seed genetics, to drones, to aeroponics. The way is wide open for international collaboration on this, especially in the new agriculture zones developing in Africa.

Secondly, unwind the detrimental NAFTA and other "free" (rigged) trade practices, which served no nation's farmers nor population, only the Wall Street/City of London financial networks of speculators and mega-corporations. Concretely, this can mean such new patterns of activity on the continent, such as fostering resumed corn production in Mexico, while transforming the corn and soy monoculture areas of the U.S., into more diversified crop and animal operations, new industrial centers and towns, with special support for young farmers and the most advanced education. While U.S.

soybeans are useful for China's livestock production, China is steadily increasing its own output of animal rations, and the U.S. can start working on diversifying the current soybean base area, as well as contribute to international food chain needs elsewhere, in win-win trade deals.

Thirdly, support farmers and rural areas in the course of this, by re-establishing the principle of parity pricing. This means that the price farmers receive for their output, must cover, or bear relation to, their costs of production, with some decent profit, in order to provide stability and future food output potential. As of 2018, this was again under discussion in Washington, D.C. in terms of reactivating the 1930s parity pricing mechanism called the CCC--Commodity Credit Corporation. These measures will enable farmers to support a family, and set up the conditions for dramatically increasing the number of smaller, but very high-technology farming enterprises. Not only restoring the social fabric of rural life, these measures will result in farmers making even more creative innovations in agro-science itself.

*By Robert L. Baker, Agricultural Research Specialist,
Executive Intelligence Review, www.larouchepub.com
bb888k@gmail.com*



GOBOB

PIPE & STEEL

HAY TRAILERS FOR EVERY NEED!



SELF UNLOADING



ECONOMY

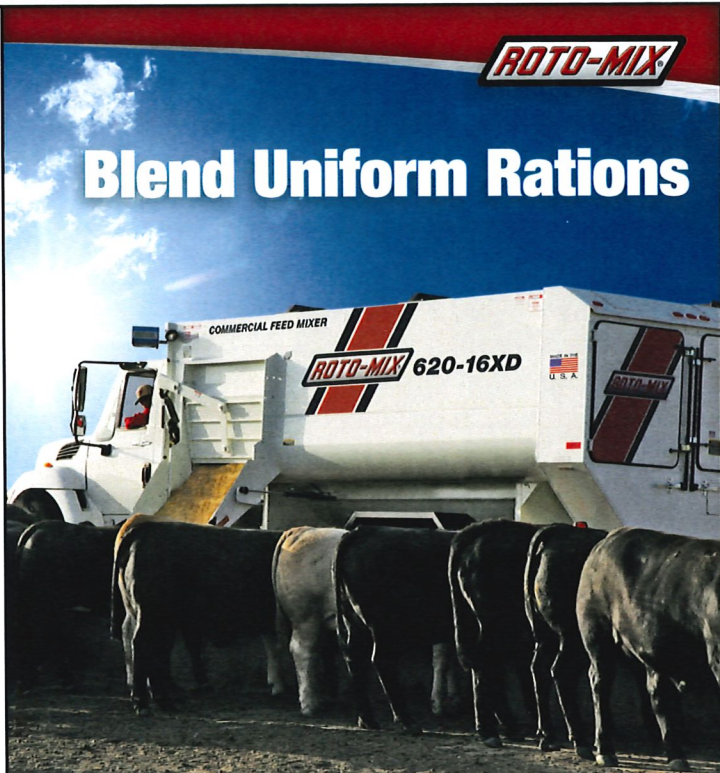


HIGH CAPACITY



844-304-4779

GobobCattlemen.com



Blend Uniform Rations

ROTO-MIX



SWIHART
Sales Company
- Mist Sprayers -

Excellent for spraying
cattle, nurseries, veg-
etables, vineyards, orchards,
Christmas Trees, livestock, mos-
quitos, chicken houses, etc.

SPRAY
INNOVATIONS



References available in
your area

Low Maintenance • High Performance • FREE Shipping

S.I. Feeders

Swihart Sales Company

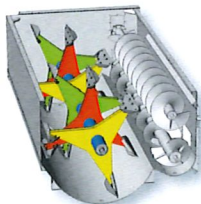
7240 County Road AA, Quinter, KS



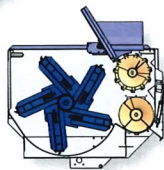
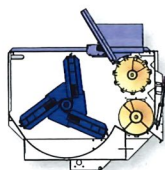
785-754-3513 or 800-864-4595

www.swihart-sales.com

**Producers from
Cow/Calf and
Stockers to
Commercial
Feeders rely
on Roto-Mix
for the right
feed mixer
to fit their
operation.**



Patented Staggered
Rotor Option
GeneRation II is ideal
for feeding rations that
require wet distillers grains.



Our rotary feed
mixers are available
with a choice of rotor
styles to better mix
your specific kind of
rations. Commercial
series mixers are
available in 540 to 920
cu ft. truck, trailer and
stationary models.

3, 5 and 6-Bar Option
Rotary Mixers allow more
leaves and particle length
during mixing with hay.



www.rotomix.com 620.225.1142



THE BEST BULLS CAN'T TIP THIS...

The Double D Covered Mineral
Feeder withstands the most ornery
bull and the roughest weather.

Order one today for only \$150.00.

please contact us **DOUBLE D**
FAMILY MAT SHOP, INC.

p. 1.888.377.2879

w. DoubleDMats.com



Health * Life * Investments * Senior Plans

Jim Phillips

"Where Service is #1 Priority"

(785) 945-3610
(800) 373-9559

(620) 727-3883 Mobile
Valley Falls, KS 66088-0160

KCA Begins Plans on 20th Annual KCA Convention and Trade Show, Nov 9 & 10

The Kansas Cattlemen's Association (KCA) has begun planning for the 20th Annual KCA Convention and Trade Show. The event will take place in Newton, Kansas on November 9th and 10th at the Meridian Center. Numerous presentations and policy meetings are being planned, as well as the annual benefit auction and banquet.

Friday, November 9th will begin with policy committee meetings, providing time for the KCA membership to review KCA resolutions, draft proposed modifications, and to collaborate with fellow members on the creation of new policy. Presentations will begin in the early afternoon and will include a presentation regarding branding and cattle theft investigations as well as a presentation on livestock genetics. Closing out Friday will be the annual membership business meeting followed by the KCA BBQ with social time and entertainment.

Saturday, November 10th will be packed full of some incredible presentations designed to help producers be profitable in their operations. We will

learn key steps to returning moisture to the soil and other conservation techniques, updates on the cattle markets, cattle handling techniques, and much more. Saturday will close with the annual KCA benefit auction and banquet.

The KCA Trade Show will take place during the convention beginning at 12:00 pm on Friday. The trade show will consist of products and services relating to cattle production and other ag services. If you or your business is interested in exhibiting during the trade show, please contact the KCA office at 785-238-1483.

Registration cards will be mailed out to all members beginning in August. The KCA Convention and Trade Show is free and open to the public. Attendees must be active and in good-standing members in order to attend committee meetings and to engage during the Annual Business Meeting. For additional information, please visit the convention page on the KCA website www.kansascattlemen.com.



**MANHATTAN - ABILENE - JUNCTION CITY - KANSAS CITY
MARYSVILLE - RILEY - SALINA - TOPEKA - WAMEGO
WE ARE A STATE AUTO LICENSED AGENCY
SERVICING ALL OF KANSAS**

**OUR AGENCY CREATED THE FARM DIVIDEND PROGRAM WITH
YOUR NEEDS IN MIND**

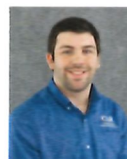
CONTACT US TODAY AND SEE IF STATE AUTO IS A GOOD FIT FOR YOUR OPERATION



JAY COPELAND
785-410-5509



LANCE SHARP
785-656-2686



LINDEN STUEVE
620-794-8359



MIKE SPOHN
785-210-6155

**Specializing in innovative risk management strategies for farmers and
commercial agriculture!**

www.copelandins.com

Schedule of Events

- July 20 - 22** **Four State Farm Show**
Pittsburg, Kansas
- August 7** **Primary Election**
- November 6** **General Election**
- November 9** **KCA Annual Membership Meeting**
- November 9-10** **KCA Annual Convention**
Newton, Kansas

Thank you for your Membership

- | | |
|----------------------|------------------------|
| Mason Greene | Donald Rife |
| David Burdette | Dave Bowman |
| Dallas & Sarah Luthi | Michael Baughn |
| Brad Kroeker | Mike & Beth Deters |
| Shawn Tasset | Jerry Bieberle |
| Greg Niehues | Jim & Janie Barber |
| Bill Hansen | Kenneth Senn |
| Alvin Matzke | Jared Delaney |
| Ted Brickey | Chris Thomsen |
| Mark LeSage | Marty Loving |
| Dusty Graves | Joe Colglazier |
| Wayne Erichsen | Wayne Rieschick |
| Norm Oeding | Keith Bacon |
| B & B Drilling, Inc. | Gates Family Sales Co. |
| Grant Glessner | Doug Parham |
| Greg McKanna | Tim Bailey |
| Gilbert Ellis | Klint Henke |
| Barry Kort | Don Goetz |

We wish you a full and complete recovery Jay Copeland!



Offering a CHOICE of companies and risk management solutions tailored to fit YOUR needs since 1947

215 N. Main Garden City, KS 800.633.0746	 <i>More Than Just Insurance!</i>	1515 E. 30th Ave. Hutchinson, KS 800.362.2104
--	---	---



DIRKS EARTHMOVING
Scott City, Kansas

Dams ~ Site Prep ~ Land Leveling
~ Feedlot Construction ~ Terraces ~

Richard Dirks
770 W. Rd 270, Scott City, KS 67871
620-872-1793



AGRICULTURAL ENGINEERING ASSOCIATES, INC.

John A. George, P.E.
Chief Engineer

1000 Promontory Drive PO Box 4 Uniontown, KS 66779 johng@agengineering.com	P 620-756-1000 C 620-704-9122 F 620-756-4600
---	--

MIX 30™
THE HIGH ENERGY "ALTERNATIVE"
LIQUID FEED

COW-CALF	STARTING CATTLE
GRASS CATTLE	FINISHING CATTLE
CALF-CREEP	DAIRY CATTLE
GRAINS	MIXES


Contact us for information, pricing, or for the location of a dealer near you.

Call us Today at 800-575-7585



1374 Horned Owl Road
Horton, KS 66439
785-486-3302
Fax 785-486-3990
800-615-0299
www.natures-way.com

Dan Haverkamp
Producers of MSE
Direct Fed Microbial
for livestock



1 Person
No Lifting
10 Minutes

900 N. Washington St.
Abilene, KS 67410

(785) 263-3436
Fax (785) 263-3101
mary.rawhide@gmail.com
www.rawhideportablecorral.com

Rawhide Portable Corral & Livestock Equipment



Kansas Cattlemen's Association
 725 N. Washington St. Ste. B
 Junction City, KS 66441

Presorted Standard
 U.S. Postage
 PAID
 Permit No 79
 Manhattan, KS 66502
 Return Service Requested

-- KCA Feed Yards --

Support KCA and the Independent Producer
 Contact a KCA Feed Yard today

Double B&S Cattle Co.
 Mike Bartlett
 Fowler, KS
 (620) 885-4558

Ford County Feed Yard
 Danny Herrmann
 Ford, KS
 (620) 369-2252

Hoxie Feed Yard
 Scott Foote
 Hoxie, KS
 (785) 386-4519

Ottawa County Feeders
 Perry Owens
 Minneapolis, KS
 (785) 392-2184

Learn more about these fine KCA feed yards on the KCA website!

THIRTY **30** SERIES

HYDRABED

from
TRIPLE C
INC

**VISIT OUR WEBSITE TO
FIND A DEALER NEAR YOU!**

902 Highway K246 - Sabetha, KS 66534 | Toll Free: 800-530-5624 | 785-284-3674 | www.triple-c-inc.com