

KCA News

KANSAS CATTLEMEN'S ASSOCIATION

July 2017

KCA Takes to the Halls of Congress and the Trump Administration

KCA Executive Director, Tyler Dupy, took part in a fly-in to Washington D.C. in June. He met with numerous departments of the Trump Administration and visited Capitol Hill for meetings with members of Congress and the Senate Agriculture Committee. The fly-in was arranged by staff of the United States Cattlemen's Association. The group of cattle producers involved included over 30 representatives from across the country.

"At KCA, we are in constant communication with our elected officials and their staff there in D.C. nearly every day. Getting boots on the ground, and meeting one-on-one is by far the best way to communicate and have our message heard," commented Dupy.

The first day, meetings started with the Senate Agriculture staffs for Ranking Member Debbie Stabenow and Chairman Pat Roberts. Topics discussed included the 2018 Farm Bill, concerns of Brazilian beef imports, Farmer Fair Practices Rules, Electronic Logging Devices, and Animal Disease Traceability.

KCA met with Senator Jerry Moran's Legislative Assistant Tom Bush. Senator Moran is a member of the Environment and Public Works Committee and Commerce, Science and Transportation Committee. Topics discussed included the Electronic Logging Device, Waters of the US, and Brazilian beef imports.

KCA met with Will Stafford, Legislative Assistant for Senator Pat Roberts on agriculture and EPA. Topics included the ELD mandate as well as Country of Origin Labeling. Easily irritated, Stafford did not appreciate being asked if Senator Roberts position on COOL has changed.

"Will indicated that every industry group brings up COOL, and Roberts pushed to repeal COOL because of the threat of retaliation by Canada and Mexico," Dupy said. "I asked if

the damage to the cattle markets was worth it. The conversation ended without comment."

Representative Roger Marshall met with KCA and the Kansas delegation to discuss topics ranging from the ELD mandate to Farm Bill development. Representative Marshall, as a freshman congressman, has been assigned to the House Agriculture Committee. Dupy requested that he keep communication open between his office and KCA as

the development of the Farm Bill moves through committee.

The first day wrapped up with a meeting with the Commodity and Futures Trading Commission's Senior Agriculture Economist, Christa Lachenmayr. Topics discussed included increased cattle market volatility, need for CFTC funding, and Mandatory Price Reporting reform.

While in Washington D.C. the entire group for the fly-in had a conference call with Craig Morris of AMS. He was unable to meet with us in person, because he was in China negotiating the terms for

opening the beef trade with the Chinese. He reported that they had come to an agreement, and that the terms would go out in a statement the following day. The US has been banned from the Chinese Beef Trade since 2003. In 2016, China imported \$2.5 billion worth of beef. The details of the verification program with China has been published on the AMS website.

Additional meetings were held with APHIS, FSIS, Agricultural Marketing Service, and the Department of the Interior. Details of these meetings have been included in other articles throughout the KCA News.

KCA would like to thank Jess Peterson, Lia Biondo, Jordan Ebert, Cooper Little, and Kyle Sinn for all of their hard work organizing the fly-in.



Board of Directors

Alan Stewart
President
Bronson, KS
(620) 939-4906
charlottes@ckt.net

Perry Owens
Vice President
(785) 392-2184
Minneapolis, KS
ocfi@nckcn.com

Landon Shaw
Sec./Treasurer
Galva, KS
(806) 543-7904
landonshaw82@gmail.com

Spencer Crowther
Hanover, KS
(785) 212-0520
scrowther32@gmail.com

Shawn Mills
Grenola, KS
(620) 205-8100
shawntmills@gmail.com

Dave Murphy
Emporia, KS
(620)481-9607
davemurphy1720@gmail.com

Tony Anderson
Farlington, KS
620-362-3238
tylertammytony@gmail.com

Pete Fish
Cosby, MO
816-289-6168
prfish728@gmail.com

Contact KCA
725 N. Washington St.
Junction City, KS
66441
Phone 785-238-1483
Fax 785-238-1518
kansascattlemen.com

We're Social!

 110060188216
 @kansascattlemen

Advertise with us and support KCA!
The Kansas Cattlemen's Association has advertising and sponsorship opportunities available. As a non-profit 503c(5), KCA depends on your contributions to help independent producers receive representation in Topeka and Washington, D.C. KCA is fully funded by member and sponsor donations. KCA News is the regular KCA publication, and is circulated throughout the state to members, vendors, advertisers, feed yards, and sale barns as well as online. For more information regarding advertising, sponsorship, and more, please contact the KCA offices at 785-238-1483 or online at www.kansascattlemen.com.

Lone Star Tick Makes Vegetarians Out of Those Bitten

Lone Star tick has recently been making news. Symptoms of a Lone Star Tick bite can mimic food poisoning or a severe allergic reaction. One possible result of getting bitten by this insect is developing an allergy to red meat. If the tick has had a meal of cow blood or mammal blood, the tick may carry Alpha-Gal, which activates the allergy immune system. The allergic response is triggered by the consumption of red meat, because the body creates Alpha-Gal antibodies, and rewires itself to fight Alpha-Gal sugar molecules, which are prevalent in red meat.



The ticks are mostly found in the Midwest, East Coast, and in southern parts of the United States. While not everyone who is bitten will develop the red-meat allergy, there are other illnesses you can contract from the ticks. If you think you've been bitten by the Lone Star tick, some symptoms include: hives, vomiting and diarrhea, fever and body aches, shortness of breath, skin

ulcers and swollen glands, chills, and dizziness or blurred vision.

Avoid tick bites with some simple preparation prior to tick-infested areas. Use repellent that contains 20 percent or more DEET, picaridin, or IR3535 on exposed skin for protection that lasts several hours. Upon returning indoors, bathe or shower sooner than later to wash off and find the presence of ticks. Check your body with a mirror. Be sure to check scalp and behind your ears. Tumble clothing in the dryer on high heat for 10 minutes to kill any ticks. Finally, vaccinate and regularly check pets for ticks.

GRAB SOME KCA MERCHANDISE ONLINE!



CAPS

Stickers

USA-BEEF TAGS

PENS

CUSTOM SHIRTS



Judge Affirms Montana Checkoff Injunction, Barring Involuntary Collection

A federal judge in Montana has ruled the state's Beef Council must first obtain the approval of ranchers before spending checkoff money it collects.

U.S. District Judge Brian Morris upheld an injunction that bars the Montana Beef Council from automatically collecting funds from the Beef Checkoff Program. The court affirmed a ruling from December that suspended fund collections in a suit filed by Ranchers Cattlemen Action Legal Fund United Stockgrowers of America (R-CALF USA).

The group's lawsuit, filed in May 2016, claims the involuntary collection without the payer's consent violated the First Amendment of the Constitution. R-CALF argued the MBC must first obtain permission from those who pay the \$1 checkoff before the funds could be spent for advertising or promotion.

"We hope this will be just the first step of correcting over a decade's worth of beef checkoff program mismanagement," R-CALF CEO Bill Bullard said in a statement.

R-CALF has opposed the MBC marketing programs because the ads do not distinguish domestic from foreign beef, but rather promote beef consumption in general. The group is also opposed to the automatic payment of checkoff funds to the MBC, which is a private entity with some oversight from USDA.

USDA Agriculture Marketing Service accepted comments regarding producer ability to redirect contributions to the Cattlemen's Beef Board in 2016. KCA made comment in opposition to the consideration by AMS, arguing that the Beef Act does not authorize the Kansas Beef Council to automatically keep the contribution, and therefore the producer should actually have to "opt-in" to the state's contribution.

"During a recent trip to Washington, D.C., I sat down with AMS, and we discussed the law and how it is written versus applied in the state of Kansas. Unfortunately, the process is so convoluted, that some on the Cattlemen's Beef Board (CBB) are not even aware the control the Federation of State Beef Councils (the Federation) has over the money. It is, however, as simple as if you're not choosing to redirect your Beef Checkoff contribution to Cattlemen's Beef Board,

AMS and CBB loses all oversight of that money, and very little is being done to hold the Federation accountable for how they spend the money," stated Tyler Dupy, KCA Executive Director.

The CBB is made up of representatives from across the country, nominated by organizations like KCA, and then appointed by the Secretary of Agriculture. CBB board members have 50% voting control of the Beef Checkoff. The other 50% vote is controlled by the Federation, which is made up of board members whose seats are purchased by the individual Qualified State Beef Councils and other affiliated organizations by forwarding Beef Checkoff contributions withheld by state beef councils, upon collection, to the Federation. The national Federation funds are not overseen or allocated by CBB.

KCA supports a mandatory/refundable producer controlled Beef Checkoff which will provide funding for efforts having the effect of increasing profit per head to the producer, such as research, promotion, and funding for other efforts including the preservation and maintenance of competitive markets.



Message from the President.....Alan Stewart

Tyler and I had the opportunity to tour the wildfire areas of southwest Kansas and to meet with people. While visiting with some of the leadership of the Ashland Community Foundation, they shared some stories about the fire and the resulting relief in forms of cash, hay, manpower, and other supplies. To date, they have received \$1.3 million in cash and established the additional value of hay around the \$1 million mark. They were humbled by the outpouring of support from all across the country. Caravans from the east to west swept into Ashland within hours of the fire.

Every dollar donated will be distributed. The Ashland Community Foundation released some early funds to those that lost homes. They are now processing applications from ranchers for relief from their losses.

A rancher we met mentioned a trip to the local feed store; he received a bill for half the cost of the mineral he needed to supplement his herd. When he questioned the store of who he needs to thank for



Santa Fe Ag Service

1003 West Main ~ Council Grove, Kansas 66846
800-875-6191

Email: agmapping@tctelco.net

Crop and Livestock Protection

Don Peterson	Council Grove	620-767-6191
Don Cress	Council Grove	620-767-6191
Todd Hein	Tampa	620-732-3675

their generosity, he was told to "Thank the World!" He was baffled by their response until later learning that donations came in from as far away as New Zealand, stating that it literally was "The World" that had contributed.



Tyler and I visited with a KCA member in southeast Meade County. He ranches 3,000 acres that he runs his cows on. The fire crossed through his ranch on the first day, destroying half of his grassland. The winds changed and it came back the second day and took the rest. He was blessed to have had the opportunity to move his livestock onto some wheat, but all of his grass was lost. With his grazing grasses gone, and time to rotate his herd every couple of days, he was facing sell of cattle to afford feed and hay for the rest of the herd. Within a week of the fire, he had enough donated hay on the ground to maintain his entire herd to spring. It was rotation day, and we were happy to help him move his herd while we were there.

While in Medicine Lodge, we visited Barber County and asked how best to disburse the KCA funds to their fire department. After speaking with the County Clerk and other staff, it was determined best to allow the Department itself to figure out how best to allocate the funds between the districts of the Rural Fire Department.

I would like to close with these words, God Bless America.

Alan



LAUE CHAROLAIS RANCH

12 - 24 month Registered Charolais & Angus Bulls For Sale
Spencer A. Crowther 785/212/0520

Hanover, Kansas 66945
www.laueranch.com



PRIVATE TREATY



Blend Uniform Rations

No One Does it Better.

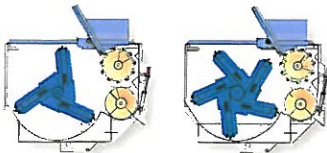


Find the Right Feed Mixer.

Our rotary feed mixers are available with a choice of rotor styles to better mix your specific kind of rations. Commercial series mixers are available in 540 to 920 cu ft. truck, trailer and stationary models.



Staggered Rotor Option
GeneRation II is ideal for feeding rations that require wet distillers grains.



3, 5 and 6-Bar Options
Rotary Mixer allows more leaves and particle length during mixing with hay.



www.rotomix.com 620.225.1142

Negotiated Cash Slaughter Cattle

National

Period	Current	Prior Year	3yr Avg
May 22	82,419	87,102	93,416
May 29	93,123	88,188	95,300
June 05	114,795	124,344	82,707
June 12	108,366	100,697	91,558
June 19	88,587	58,830	79,228

Kansas

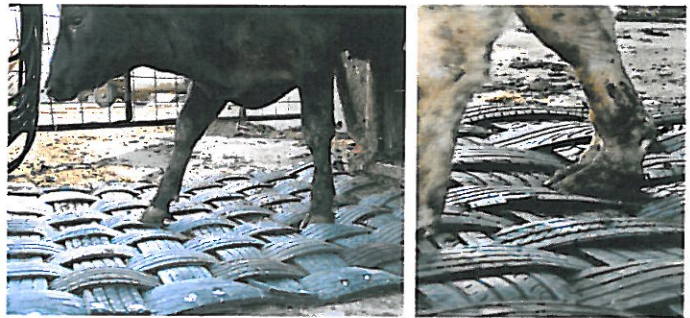
Period	Current	Prior Year	3yr Avg
May 22	17,023	19,547	18,168
May 29	21,720	17,684	13,778
June 05	24,878	22,824	12,248
June 12	24,572	14,834	12,769
June 19	17,627	8,916	8,772

Data Courtesy of USDA AMS



CATTLE MATS WITH PROVEN PREVENTION

Non-slip and durable cattle mats from Double D Mats make unforgiving surfaces comfortable for all your cattle.



please contact us

p. 1.888.377.2879
w. DoubleDMats.com



1374 Horned Owl Road
Horton, KS 66439
785-486-3302
Fax 785-486-3990
800-615-0299

www.natures-way.com

Dan Haverkamp
Producers of MSE
Direct Fed Microbial
for livestock



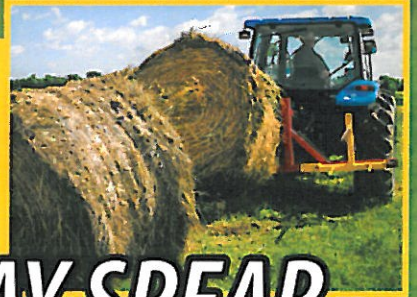
Got? COWS! **Get GOBOB**

OFFICIAL SUPPLIER   ACCREDITED BUSINESS  

ARE YOU READY FOR HAY SEASON?



NEED HAY HANDLING EQUIPMENT:



BIG HOSS HYDRAULIC HAY SPEAR

844-304-4779

GobobCattlemen.com

Electronic Logging Device Mandate Threatens Cattle Hauling

The Kansas Cattlemen's Association Board of Directors has voted to endorse the United States Cattlemen's Association's position on the Electronic Logging Device (ELD) Mandate. Currently set to be effective December 18, 2017, the ELD mandate is considered by livestock haulers to be inconsiderate of the cattle hauling industry.

Cattle haulers argue that the regulation was written with no consideration of livestock. Hours of service regulations, when hauling grain and mineral commodities, is not typically an issue, but when you introduce a living being to the equation, reaching the final destination becomes a serious matter of


animal wellness and health. USCA argues that the HOS rules applying to livestock haulers must be made more flexible so that drivers can safely do their jobs while preserving the welfare of the animals in their care.

Livestock and cattle haulers receive special animal handling training, and use specialized equipment specific to the transportation of living animals. Upon the effective date of the ELD mandate, their will immediately become an exaggerated shortage of qualified haulers.

As a consequence of the regulation, cattle will be required to be off-loaded during periods of rest, increasing stress on the animals and enhancing the risk of disease.

USCA has called for the enforcement deadline to be delayed for a period of no less than three years to allow adequate time for the industry concerns to be addressed as well as necessary educational programming to be conducted.

KCA will continue to keep you informed of the status on the ELD mandate.



PROFIT POTENTIAL

CREEP FEEDING WITH LIQUID PLUS

THESE CALCULATIONS DEMONSTRATE A 250% RETURN ON YOUR INVESTMENT.

CREEP FEEDING WITH LIQUID PLUS + ASSURES THAT CALVES WILL BE IN CONDITION TO CONTINUE GAINING PROFITABLY FOR THEIR BUYERS.

	Average Daily Gain	Weaning Weight*	Gross Value at Weaning
Calves not Creep Fed	2.3 lbs	550 lbs	550 lbs x \$2.00/lb = \$1,100
Creep Fed Calves (115 days)	2.6 lbs	584.5 lbs	584.5 lbs x \$2.00/lb = \$1,169
Difference Between Programs	.3 lbs	34.5 lbs	34.5 lbs x \$2.00/lb = \$69.00

HE 15-5+ LIQUID SUPPLEMENT

Liquid Plus+ creep feed products provide nutrients and minerals needed to help increase gains.

www.LiquidPlusFeeds.com - 620.664.0252

THE RESULT?

Heavier calves at weaning!



Luco Mfg. Co.

Hydraulic Chutes ~ Working Circles
Cake Feeders ~ Continuous Fencing
Panels & Gates

See Us at www.lucoinc.com
1-888-816-6707



Offering a CHOICE of insurance companies and risk management solutions tailored to fit YOUR needs since 1947

215 N. Main
Garden City, KS
800.633.0746



KFSa
INSURANCE AGENCY

1515 E. 30th Ave.
Hutchinson, KS
800.362.2104

Health * Life * Investments * Senior Plans

Jim Phillips

“Where Service is #1 Priority”

(785) 945-3610
(800) 373-9559

(620) 727-3883 Mobile
Valley Falls, KS 66088-0160

DIRKS

EARTHMOVING

Scott City, Kansas

Dams ~ Site Prep ~ Land Leveling
~ Feedlot Construction ~ Terraces ~

Richard Dirks

770 W. Rd 270, Scott City, KS 67871
620-872-1793

Hey America! Beef Up! #12

We did it in the past, let's do it again.

Washington, Lincoln, FDR

China, Russia, India

By Robert L. Baker



U.S. agriculture today is caught in a clash between two international systems, and lessons from our past are essential. On one side, is our impulse for modern technology and thinking to uplift the rural productive and social platform, in line with the Preamble of the Constitution, to benefit "ourselves and our posterity." On the other side, big financial forces and money cartels on Wall Street and in London are financing the consolidation of bigger and bigger corporate food structures, from farm field to the city dinner table. These powers have transformed the pricing process of U.S. farm commodities into speculator, split-second computerized trades, best seen as the casino of the "Magic of the Marketplace." This is the enemy of the American System of economics. This is the system we fought a revolution to get rid of.

Look back at history.

In 1750 to 1775, prior to the American Revolution, the British East India Company/banks and government, were always artificially yanking the farm prices up and down and treating colonists like serfs. They got fed up and we know what happened in 1776 and afterward. Through what became known in the 1800s as the American System of economics, the new nation built vast new infrastructure--canals, rail, new farmland and cities. The principles were laid down by the first U.S. Treasury Secretary Alexander Hamilton, in his reports on manufacturing, banking and credit.

In 1812, the British tried again to thwart the Americans and their system, and lost.

In 1861, the Civil War started. with the British on the side of the South, slavery and "free" trade. The outbreak of war was preceded by years of Wall Street and London money boys subverting the American System, by looting farm prices, creating land and bank bubbles, and other speculation, which caused an historic depression.

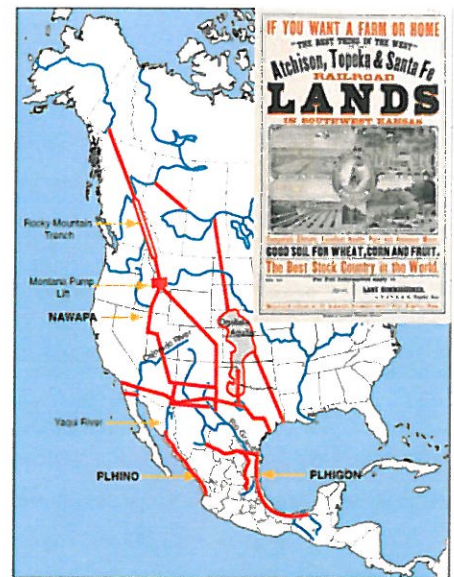
President Lincoln restored the American System, stopped slavery and re-established Hamilton's credit system. With Greenback credit, Lincoln launched the Trans-Continental Railroad, passed the Homestead Act of 1862, providing land and credit for new Midwest farm and industrial development. Plus, the Land Grant colleges, extension service and what is now the United States Department of Agriculture. The U.S. became an industrial giant, which continued until Wall Street and London interests began shifting the U.S. back to speculation and World War I, one marker for which was the assassination of President McKinley in 1898.

Then came the 1920s crash of farm commodity prices, ruining many farmers and banks; and the Great Depression hit in the 1930s.

In 1932, Franklin Roosevelt was elected and immediately put the U.S. back on The American System. He had written his college thesis on Hamiltonian economics! First he went after Wall Street and implemented the Glass-Steagall Act. Then he created American System style credit mechanisms through the Resolution Trust Corporation, and the United States Department of Agriculture. The new financing policies funded infrastructure like the TVA, the Hoover Dam, and the Rural Electrification. A moratorium was put on farm foreclosures; Farm Credit System was set up to help refinance farmers, Henry Wallace ran the USDA, setting up Soil Conservation Service. The Civilian Conservation Corps put people to work., Farm prices rose with the passing of a parity pricing system through the Agricultural Adjustment Acts of 1933 and 1938 and commodity price floors were established overnight. The American System of Economics turned the nation around in record time. Research advanced into atomic science, plant genetics and other frontiers.

In 1950's, Pres. Eisenhower's Interstate Highway program built 40,000 miles of interstate in 10 years. He launched the Atoms for Peace nuclear program.

In the 1960's, Pres. Kennedy launched the space program and put a



man on the moon in less than 10 years. He also planned to build NAWAPA, the biggest water project in human history.

Since the 1990's, After the Soviet Union collapsed and the Berlin wall came down, Lyndon and Helga LaRouche called for the United States to return to the American System of economics, and apply the same principle to foreign relations, to cooperatively build worldwide "corridors" of development, for the benefit of all nations.

He spoke of a "World Land-Bridge" of corridors of development, across Eurasia, into Africa, through the Americas and around the globe. Fifty miles on each side of the modern rail "spine" would become industrial, agricultural and residential concentrations to jump start economic activity and bring poor people into the 21st Century. This is now underway, since 2013, as the "New Silk Road," announced first by China, and

proceeding with Russia and 60 more nations. It is like the post-WW II Marshall Plan, 20-times over.

In China, it is reported that China poured more concrete in the last 10 years than the United States the previous 100 years; China produces as much steel in one month, as the United States does in one year. New modern cities are being built in record speed. Airports, ports,

nuclear power plants, high-speed rail, universities and research centers are being built on a scale that boggles the mind. 600 million people have been lifted out of poverty in 30 years. China has the biggest space program in the world. How? Their banking and credit system is modeled after the Hamiltonian system of our founding fathers. Pres. Xi Jinping, calling for spreading this

interationally, refers to it as a “Win-win” policy for all concerned.

Russia is transforming itself in a similarly rapid way. Agricultural / industrial production is growing rapidly. They have relatively little national debt.

India has made major development agreements and is getting more and more involved in the One Belt, One Road program.

Beyond the New Farm Bill—Lead the Way into a New World Development Era

This summer, “Listening Sessions” have been started by the House of Representatives Agriculture Committee for input from the Farm belt into a new farm bill. OK, but, this only goes so far, because our problem is “the whole shebang.” What’s needed are “shouting sessions” to make known the nature of our crisis, and activate farmers, ranchers and all citizens on what the world situation is, and what can and must be done.

In short, we have an urgent need in the US, North America and Europe—the “Transatlantic”—to dump our deadly financial system (too-big-to-fail banks, bail-outs, wild speculation, toxic debt, etc.)—and replace it, before it crashes, with new arrangements for credit, sound banking and a drive to rebuild and advance our declining economy. The crisis is visible in the rural areas with the boarded up towns, and declining population; and in our formerly great cities, with real and dangerous breakdown, like the entire New York City transportation system. We are in a “Minneapolis Bridge” phase in our nation, referring to the 2007 sudden collapse of the bridge over the Mississippi, killing over 100 people in the crash. Our infrastructure and our people are hurting.

Secondly, tied to the special interests that steered us into this mess—for shorthand, Wall Street and the City of London—are pushers for geopolitical confrontation around the world, that can potentially ignite end-game nuclear war. The regime-change policy NATO is pursuing across the Mideast into Afghanistan, and the crazy policy of encirclement and threats to Russia, and also China.

Pres. Donald Trump is on record for financial and economic change, and good relations with Russia, China and other nations. But we are at dead center, when it comes to making it happen. He has stated support for the critical measure, of reinstating Glass Steagall (the 1933 law, separating and giving Federal insurance to normal commercial banking, and walling off, and not protecting speculative financial activities.



This worked for over 65 years, until repealed in 1999.) Trump met in May in Florida with Chinese Pres. Xi Jinping, mandating consultations over 100 days to work out mutually beneficial trade, security and other relations. This is all to the good, but citizens must make it all happen.

The enemies of our nation and mankind are going all out to deploy a “regime change” dirty operation against the presidency itself, to prevent the real policy shift we can otherwise make. That’s how to make sense of what otherwise seems to be an inexplicable mass “coincidence” of smears, dirty allegations, investigations and hysteria, including open assassination threats against the President.

But, the very good news is that a huge part of humanity is on the move, into a fabulous development era, and we can get on board. There is an unprecedented, deliberate development

drive, called the ‘New Silk Road’—or Belt and Road Initiative, that is underway, formally called for in Fall, 2013, by Xi Jinping in Central Asia, and since that time, going like gangbusters across Eurasia, into Africa and even South America. The idea is to build land corridors—the “Belt”—and sea lanes—the “Maritime Silk Road”—of high-tech transportation, and new cities, factories, nuclear power complexes, and even new agriculture areas, such as the Far East of Russia.

Keeping that in mind, now look at our own immediate situation, in terms of the imminence of a blow-out and chaos, if we don’t do anything.

The good news is that there are forces taking action. Glass Steagall reinstatement bills are ready in both the House and Senate, with many co-sponsors and resolutions in seventeen states. The idea of setting on a bank to direct credit for infrastructure, on the principles of Alexander Hamilton, our first Treasury Secretary, who laid it all out, is under discussion. None of this is a “financial reform” matter. It is a matter of saving our nation. In the 1930s, we were in a very similar position of economic crisis, and war danger, and FDR pulled it out. We can succeed again today.

Spread the word: Reinstate the Glass Steagall law, take the necessary economic measures and get credit going for mass infrastructure construction. Give the Listening Sessions an earful of orders on what to do!

Robert L. Baker, is an economic research specialist for *The Executive Intelligence Review* - bb888k@gmail.com

Congressional Directory

House of Representatives

Roger Marshall
202-225-2715

Lynn Jenkins
202-225-6601

Kevin Yoder
202-225-2865

Ron Estes
202-225-6216

Senate

Pat Roberts
202-224-4774

Jerry Moran
202-224-6521

State Wraps Session with New Budget and School Finance Bill, Taxes to Rise

It took 113 days instead of the scheduled 100, but Kansas lawmakers finally ended their 2017 session.

Their final act was to approve a two-year budget plan that supporters say will start the process of repairing damage done by Republican Gov. Sam Brownback's tax cuts. But the session's climactic moment occurred a week earlier when lawmakers overrode Brownback's veto of a bill that largely reversed those cuts.

The \$1.2 billion tax increase passed over Brownback's objections raises individual income tax rates and restores a third tax bracket eliminated by the 2012 bill. It also repeals a tax exemption given to more than 300,000 business owners and farmers.

The budget includes approximately \$30 million for state employees, who haven't had an across-the-board pay increase since 2008. Employees who have worked for the state for five or more years will get a 5 percent bump. Others, including all employees in the state's court systems, will get a 2.5 percent increase.

Brazilian Corruption Admitted - Sec. Perdue Halts Imports on Concern for Quality

U.S. Secretary of Agriculture Sonny Perdue announced the suspension of all imports of fresh beef from Brazil because of recurring concerns about the safety of the products intended for the American market. The suspension of shipments will remain in place until the Brazilian Ministry of Agriculture takes corrective action which the USDA finds satisfactory.

Since March, USDA's Food Safety and Inspection Service (FSIS) has been inspecting 100 percent of all meat products arriving in the United States from Brazil. FSIS has refused entry to 11 percent of Brazilian fresh beef products. That figure is substantially higher than the rejection rate of one percent of shipments from the rest of the world. Since implementation of the increased inspection, FSIS has refused entry to 106 lots (approximately 1.9 million pounds) of Brazilian beef products due to public health concerns, sanitary conditions, and animal health issues. It is important to note that none of the rejected lots made it into the U.S. market.

The Brazilian government had pledged to address those concerns, including self-suspending five facilities from shipping beef to the United States. The action to suspend all fresh beef shipments from Brazil supersedes the self-suspension.

The budget plan authorizes state general fund spending of \$6.4 billion in the fiscal year that begins July 1 and \$6.3 billion the following year. Those spending levels wouldn't have been possible without the tax increase that lawmakers approved.

The three brackets are as follows:

- Taxable income from \$0 to \$30,000 would be taxed at 3.1 percent, up from 2.6 percent. Before the 2012 tax cuts, this income was taxed at 3.5 percent.
- Taxable income from \$30,001 to \$60,000 would be taxed at 5.25 percent, up from 4.6 percent. Before the 2012 tax cuts, this income was taxed at 6.25 percent.
- Taxable income above \$60,001 would be taxed at 5.7 percent, up from 4.6 percent. Before the 2012 tax cuts, this income was taxed at 6.45 percent.

Lawmakers returned later in June for the ceremonial end to the session. At 114 days, it tied the record-long session in 2015.

Secretary Perdue issued the following statement: "Ensuring the safety of our nation's food supply is one of our critical missions, and it's one we undertake with great seriousness. Although international trade is an important part of what we do at USDA, and Brazil has long been one of our partners, my first priority is to protect American consumers. That's what we've done by halting the import of Brazilian fresh beef. I commend the work of USDA's Food Safety and Inspection Service for painstakingly safeguarding the food we serve our families."

During a meeting with FSIS, KCA raised concern of the exposed political corruption with JBS and the Brazilian Government. USDA officials told KCA and others in the meeting that their focus is on the results of their inspections, not on the political forces at play in Brazil.

The inspections are largely based on US standards being enforced and certified by the Brazilian government inspectors. KCA argued that enough is not being done to ensure the imports from Brazil meet US standards and are, in fact, safe.

Brazil is an FMD free country by vaccination. A drawback to vaccination is the inadvertent consequence of making the animal a carrier of the disease with no symptoms.


Schedule of Events

- July 6 **KCA Regional Meeting**
McPherson, Kansas
- July 21-23 **4 State Farm Show**
Pittsburg, Kansas
- October 28 **KCA Annual Meeting**
Newton, Kansas
- October 28-29 **KCA Annual Convention**
Meridian Center
Newton, Kansas

Thank you for your Membership

- | | |
|----------------------|--------------------|
| Mark Strathman | Dan Schaffer |
| Paul Weyer | Barry Kort |
| Greg Niehues | Anthony Livestock |
| Ted Birtell | Kurt Israel |
| Holopirek Cattle Co. | Christopher Dietel |
| Marty Loving | Ted Birtell |
| Kenneth Senn | Sam Mosshart |
| Ronald Rife | David Pfeifer |
| Greg McKanna | Mike & Beth Deters |
| Philip Hodson | Roger Gilbert |
| W.L. Neu | Mike Steinlicht |
| Jim & Janie Barber | Jerry Bieberle |
| Leo Rau | Doug Koch |
| Joe Colglazier | Greg Schultejans |
| Gilbert Ellis | Gregg Curry |
| Brad Haun | Sam Roberts |
| Don Goetz | Arnold Hildebrand |
| Tonya Combes | Jared Delaney |
| Richard Sailors | Edwin Lenkner |
| Bob Davis | Joe Fenske |
| Tim Bailey | Kyle Johnston |
| Wayne Rieschick | Doug Parham |

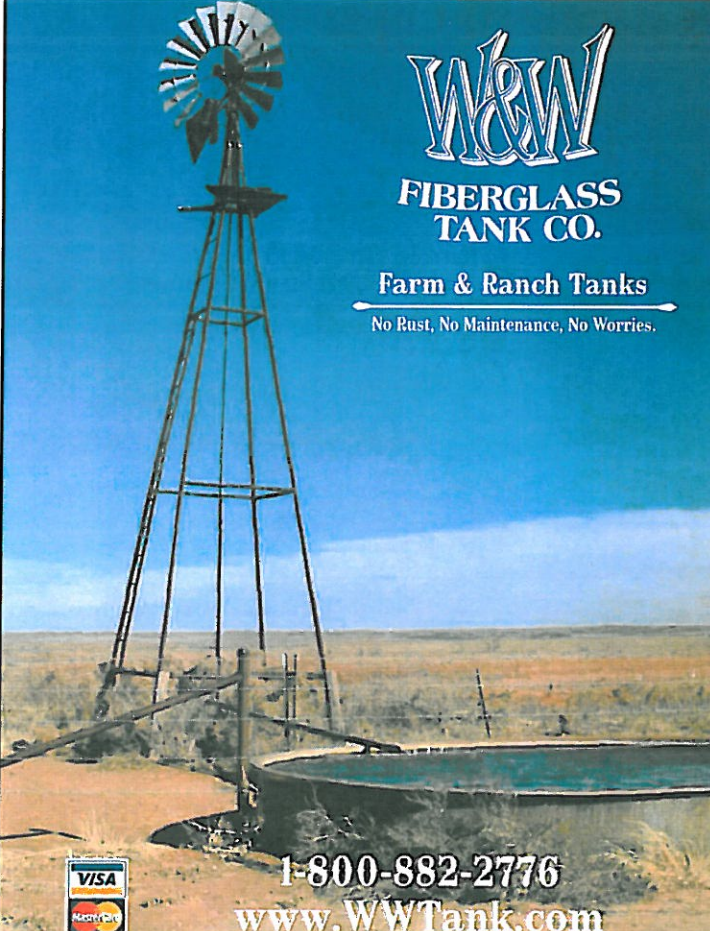




**AGRICULTURAL
ENGINEERING
ASSOCIATES, INC.**

John A. George, P.E.
Chief Engineer


1000 Promontory Drive	P 620-756-1000
PO Box 4	C 620-704-9122
Uniontown, KS 66779	F 620-756-4600
johng@agengineering.com	



W&W
**FIBERGLASS
TANK CO.**

Farm & Ranch Tanks
No Rust, No Maintenance, No Worries.

1-800-882-2776
www.WWTank.com

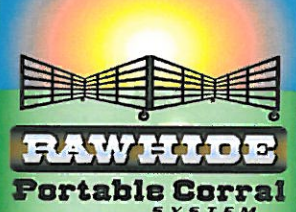


MIX 30™
THE HIGH ENERGY "ALTERNATIVE"
LIQUID FEED

COW-CALF	STARTING CATTLE
GRASS CATTLE	FINISHING CATTLE
CALF-CREEP	DAIRY CATTLE
GRAINS	MIXES

Contact us for information, pricing, or for the location of a dealer near you.

Call us Today at 800-575-7585



1 Person
No Lifting
10 Minutes

Rawhide Portable Corral & Livestock Equipment

900 N. Washington St.
Abilene, KS 67410

(785) 263-3436
Fax (785) 263-3101
mary.rawhide@gmail.com
www.rawhideportablecorral.com



Kansas Cattlemen's Association
 725 N. Washington St. Ste. B
 Junction City, KS 66441

Non-Profit Organization
 U.S. Postage
 PAID
 Permit No 79
 Manhattan, KS 66502
 Return Service Requested

-- KCA Feed Yards --

Support KCA and the Independent Producer
 Contact a KCA Feed Yard today

Double B&S Cattle Co.
 Mike Bartlett
 Fowler, KS
 (620) 885-4558

Ford County Feed Yard
 Danny Herrmann
 Ford, KS
 (620) 369-2252

Hoxie Feed Yard
 Scott Foote
 Hoxie, KS
 (785) 386-4519

Ottawa County Feeders
 Perry Owens
 Minneapolis, KS
 (785) 392- 2184

Learn more about these fine KCA feed yards on the KCA website!

THIRTY **30** SERIES

HYDRABED

from
TRIPLE C
INC

VISIT OUR WEBSITE TO
FIND A DEALER NEAR YOU!

902 Highway K246 - Sabetha, KS 66534 | Toll Free: 800-530-5624 | 785-284-3674 | www.triple-c-inc.com