

KCA News

Sept 2018

KANSAS CATTLEMEN'S ASSOCIATION

KCA Supports Food and Agribusiness Merger Moratorium and Antitrust Review Act of 2018

Kansas Cattlemen's Association has signed on in support of a bill set to slow the feverish tide of large agribusiness mergers and acquisitions.

The "Food and Agribusiness Merger Moratorium and Antitrust Review Act of 2018" introduced by Sen. Cory Booker (D-NJ) would impose an 18-month moratorium on "large" agribusiness, food and beverage manufacturing, and grocery retail mergers and acquisitions. The legislation would impact any company with annual net sales or total assets of more than \$16 million.

The legislation would also establish a commission to study ways to strengthen antitrust oversight of the farm and food sectors and recommend improvements to merger enforcement.

While the largest multinational agribusiness corporations are posting record earnings, farmers are facing desperate times. Since 2013, net farm income for U.S. farmers has fallen by more than half and median on-farm income is expected to be negative in 2018.

In just the past two years, chemical and seed company acquisitions and mergers have allowed three companies to control two thirds of the crop seed and nearly 70% of the agricultural chemical markets. When these acquisitions and mergers were announced it led U.S. Senator Chuck Grassley (R-IA) to call the wave of mergers a "tsunami."

Over the last three decades, the growth of market concentration and market power has spun out of control. During this period, the four largest multinational corporations have gained control of 71% of the pork market, 85% of the beef market and 90% of the grain market.

The Food and Agriculture Concentration and Market Power Review Commission which would be established by this legislation will develop recommendations to establish a fair marketplace for family farmers and their communities. The commission would be specifically required to review the impact of vertical integration, packer ownership of livestock, and contracting practices by large agribusinesses on family farmers and suppliers.

2018 Farm Bill in Limbo as Legislators Most Likely to Complete Following Expiration

The 2014 Farm Bill will expire on September 30, 2018. Though the Farm Bill conference committee has been working to settle the difference between the House and Senate versions of the legislation, there are still outstanding disagreements about funding for conservation and nutrition programs as well as payment limitations for commodity programs.



FARM BILL

their time and get it right. That being said, it renews every five years, there is plenty of time to get it done prior to its expiration. Using Agriculture as a political bargaining chip should be avoided," stated Tyler Dupy, KCA CEO/ Executive Director.

Congress may vote to extend the current Farm Bill or allow it to expire. If expiration occurs, several programs will lose authorization and funding, including: Value-Added Producer Grants and the Beginning Farmer and Rancher Development Program.

"We will have to live with the 2018 Farm Bill for a long time, so we want the legislators to take

Board of Directors

Shawn Mills
President

Grenola, KS
(620)205-8100

shawntmills@gmail.com

Perry Owens
Vice President
(785)392-2184

Minneapolis, KS
ocfi@nckcn.com

Greg Davis
Sec./Treasurer
Madison, KS
(620)340-9534

ranchlandfeeds@gmail.com

Dave Murphy
Emporia, KS
(620)481-9607

davemurphy1720@gmail.com

Tony Anderson
Farlington, KS
(620)724-2860

tylertammytony@gmail.com

Pete Fish
Cosby, MO
(816)289-6168
prfish728@gmail.com

Nicole Pfrang
Goff, KS
(785)285-1066
nicpfrang@gmail.com

Andy Miller
Fall River, KS
(620)289-6168
andymiller2004@gmail.com

Contact KCA

P.O. Box 1489
Junction City, KS 66441
Phone 785-238-1483
Fax 785-238-1518
kansascattlemen.com
cowsrus@kansascattlemen.com

 110060188216

 @kansascattlemen

CBB Operating Committee Approves FY19 Plan of Work

The Cattlemen's Beef Promotion and Research Board will invest about \$40.5 million into programs of beef promotion, research, consumer information, industry information, foreign marketing and producer communications during fiscal 2019, subject to USDA approval.

In action at the end of its September 11-12 meeting in Denver, CO, the Operating Committee approved checkoff funding for a total of 14 "Authorization Requests" – or proposals – brought by seven contractors for the fiscal year beginning October 1, 2018. The committee, which includes 10 producers from the Beef Board and 10 producers from the Federation of State Beef Councils, also recommended full Beef Board approval of a budget amendment to reflect the split of funding between budget categories affected by their decisions.

The seven contractors had brought a total of \$45 million worth of funding requests to the Operating Committee this week, almost \$5 million more than what was available from the CBB budget.

In the end, the Operating Committee approved proposals from seven national beef organizations for funding through the FY 19 Cattlemen's Beef Promotion and Research Board budget, as follows:

National Cattlemen's Beef Association (five proposals for \$27.4 million)

U.S. Meat Export Federation, (one proposal for \$8.3 million)

North American Meat Institute (four proposals for \$1.9 million)

Cattlemen's Beef Board (one proposal for \$1.7 million)

American Farm Bureau Foundation for Agriculture (one proposal for \$700,000)

Meat Import Council of America (one proposal for \$417,000)

National Livestock Producers Association (one proposal for \$60,000)

Included in the budget was \$1.7 million for producer communications, which includes investor outreach using national communications and direct communications to producers and importers about checkoff results; as well as development and utilization of a publishing strategy and platform, and a state beef council content hub.

The full fiscal 2019 budget is \$43.9 million. Separate from the authorization requests, other expenses funded include \$227,000 for evaluation; \$300,000 for program development; \$800,000 for USDA oversight/CBB legal; and about \$2 million for administration. The fiscal 2019 budget represents an increase of \$3 million from the \$40.9 million FY18 budget.

The checkoff assesses \$1 per head on the sale of live domestic and imported cattle, in addition to a comparable assessment on imported beef and beef products. States retain 50 cents on the dollar. The states then often use a large portion of that money to buy seats on the Federation of State Beef Councils Board as well as the U.S. Meat Export Federation Board. The USDA and the Cattlemen's Beef Board have no oversight on over half of the \$80 million Beef Checkoff enterprise.

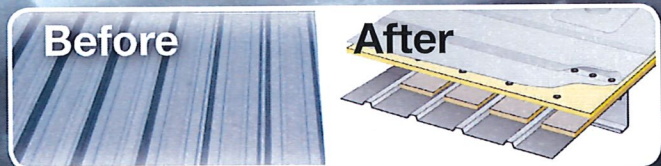


WATER TIGHT ROOFING

COOLER COWS ARE HAPPIER COWS!

Elastomeric Coating

Single Ply Membrane



Claus Dairy Farm Dalhart



Centramatic

**No tear off and no disruption
to your production.**



Serving Kansas, Texas, and Oklahoma

"This was a very clean operation. It didn't cost more or take longer. They did exactly what they said they would do."

Dyke Rogers
Owner - CDFD

"WaterTight's commitment to excellence is just that - WaterTight!"

Larry Easley
Storage Management Associates, Inc
TSSA Board of Directors 2012-2015

888-809-9976

www.watertightroofinginc.com



Message from the President.....Shawn Mills

Finally some much needed, widespread rain arrived for our dried out territory. The drought monitor is shrinking, so I hope this keeps up. Another positive is the strong demand for beef has the market headed higher. Now we just need to keep that momentum going.

It looks as if, at least for the short term, we will not have a Farm Bill. It would be nice to see Agriculture receive more priority in Washington D.C., and not used as a bargaining chip. At least we are seeing some progress in trade negotiations and Country of Origin Labeling has been receiving a lot of attention lately. We need the consumer to speak up and help out with COOL. Education is key on that front.

The Kansas corn harvest is expected to be twice that of the wheat harvest. It is going to be a very busy harvest season, and I hope everyone will remember to think safe. Many ag-related injuries take place during harvest. Stay rested, stay alert, and bring in the harvest safely.

I am looking forward to seeing everyone in November for

the 20th Annual KCA Convention. The trade show has sold out and there are many generous sponsors supporting KCA, so come out and show your support to these great exhibitors.



Our committee meetings will take place on the morning of Friday, November 9th. Please take the time to attend these meetings. We will be doing a lot of policy review and work on Friday. I realize it may not be the most desirable way to spend a day, but it is critical for keeping KCA relevant. Although I recommend attending both days of convention. If you can't get away for that long, then come for one day, or even a few hours. The only cost to attend is for meals, so come on out to Newton!

Until next time,
Shawn Mills

Are You Interested in saving money?

KCA members are eligible for potential dividends! You could see a return on your insurance premiums.

- A local agent
- Specialized coverages
- Competitive pricing
- Dividend potential
- Expertise with over 80 years writing farm insurance

Visit StateAuto.com/FindAnAgent to find a local agent and learn more.



This brochure is intended for general information purposes only, and is not an insurance policy. Eligibility, coverages, discounts, exclusions and benefits may vary by state. Coverages described are subject to definitions, limitations, exclusions and conditions. Please read the policy forms and endorsements for details.

Jodie's Dish

Cottage (Shepherd's) Pie

Ingredients

Filling:

2T Vegetable Oil
 1 Small onion, chopped
 2 carrots, peeled and diced
 3 cloves garlic, minced
 1 1/2 lb ground beef
 1 t salt
 2 t freshly ground black pepper
 2 T all-purpose flour
 2 t tomato paste
 1 C beef broth
 1 t Worcestershire sauce
 1 t rosemary leaves
 1/4 t thyme
 1/2 C frozen corn
 1/2 C frozen peas

Mashed Potatoes:

1 1/2 lb Pealed Potatoes
 1/4 C Milk
 3 T Butter
 Salt & Pepper

Let's begin by preheating the oven to 400 degrees F. I love to prepare this dish when I have leftover mashed potatoes. However, I have included the recipe for mashed potatoes below. Let's start with the filling. Place vegetable oil into a large pan and set over medium high heat. When the oil shimmers, add the onion and carrots and saute for approximately 3 to 4 minutes. Add the garlic.

Next, add the beef, salt and pepper and cook until browned. Sprinkle the meat with the flour and toss to coat, continuing to cook for another minute or so. Add the tomato paste, beef broth, Worcestershire, rosemary, thyme, and stir well. Bring to a boil, reduce the heat to low, cover and simmer slowly 10 to 12 minutes or until the sauce has thickened slightly.

Finally, add the corn and peas to the mixture and spread evenly into an 11 by 7-inch baking dish. Top with the mashed potatoes. The goal is to seal it like you would put icing on a sheet cake. Optional: sometimes I'll garnish with parsley or paprika. Bake for 20-25 minutes. Enjoy!

Mashed Potatoes

In a medium saucepan, cover peeled potatoes with cold salted water by 1 inch. Bring to a boil, then reduce to a simmer, and cook until potatoes are easily pierced with a knife, about 15 to 20 minutes. Drain; return to pan. Stir over medium until a starch forms on bottom of pot, about 1 minute. Remove from heat; mash with 1/4 cup milk and 3 tablespoons butter until smooth. Season with salt and pepper.

CIA COPELAND INSURANCE AGENCY

**MANHATTAN - ABILENE - JUNCTION CITY - KANSAS CITY
 MARYSVILLE - RILEY - SALINA - TOPEKA - WAMEGO
 WE ARE A STATE AUTO LICENSED AGENCY
 SERVICING ALL OF KANSAS**

**OUR AGENCY CREATED THE FARM DIVIDEND PROGRAM WITH
 YOUR NEEDS IN MIND**

CONTACT US TODAY AND SEE IF STATE AUTO IS A GOOD FIT FOR YOUR OPERATION



JAY COPELAND
785-410-5509



LANCE SHARP
785-656-2686



LINDEN STUEVE
620-794-8359



MIKE SPOHN
785-210-6155

**Specializing in innovative risk management strategies for farmers and
 commercial agriculture!**

Kansas Cattlemen's Association to Move to New Office Mid-November

This fall, the KCA offices will be transitioning into a new location on the west side of Junction City. The storms in late July and August flooded the office numerous times. KCA moved into a temporary, dry location and began the search for a permanent office.

After an exhaustive search, the KCA Board of Directors chose a new location in a shopping center on West Sixth Street. The new location provides the opportunity to build out the space to KCA specifications, ample parking, a significant increase in foot traffic, and excellent visibility. Construction is expected to be completed mid-November.



"We certainly did not expect to be moving, but circumstances change. The first priority is to serve the membership of the Kansas Cattlemen's Association, and that is our focus. The new office will provide opportunities for increased services and better meeting space for when we host industry meetings and elected officials," stated Tyler Dupy, KCA CEO and Executive Director.

The mailing address for KCA has changed to PO Box 1489, Junction City, KS. All other contact information will remain the same. You may call KCA by dialing 785-238-1483 or you may also email cowsrus@kansascattlemen.com.

THE AMERICAN BLACK HEREFORD ASSOCIATION

2018 National Show & Sale

in conjunction with the annual membership meeting, Nov. 8th - 10th,
at the Missouri State Fair Grounds in Sedalia, Missouri



FEATURING 80+ lots of Bred and Open Black Hereford females

**SALE - SATURDAY
November 10, 2018
12PM CENTRAL**

**Halter Broke Show Prospects
Pens of 3
Individual Females
Lots of Embryos**

*Join us Friday, November 9, 2018 for
the Annual ABHA Show*

Watch for these fine breeders' lots in the sale:

**CRESCENT HILL
BLACK HEREFORDS LLC**
Pen: 60 - 61 - 62
CHAD & KAITLIN JONES
OSAWATOMIE, KS 66064
(913) 731-3428
CRESCENTHILL
BLACKHEREFORDS@GMAIL.COM

FLYING DIAMOND K RANCH
EMBRYO LOT #92 & #93
KEN PADILLA
2186 HARVARD ST.
FORT COLLINS, CO 80525
(970) 204-1000
KEN-PADILLA@Comcast.net

For More Information or to request a Sale Catalog Contact:
TIM TARTER:
833-501-4750, ext 2
tim@blackhereford.org

www.blackhereford.org

This sale will be broadcast live on the Internet.
DVAuction
Broadcasting Real-Time Auctions
Real time bidding & proxy bidding available.
HOST HOTEL
BEST WESTERN STATE FAIR INN
SEDALIA, MO 877-826-6101
MENTION ABHA FOR A SPECIAL RATE

Remembering Nathan Pike - Long time KCA Member & Supporter Passes

Nathan "Nate" Robert Pike, 85, died Thursday September 20, 2018 at the Minneola District Hospital. He was born to Cecil Eugene and Lula Belle (Dorsey) Pike on May 22, 1933. Nathan was born in the home of his grandparents in the Lexington Community, Clark County, Kansas on land homesteaded by Grandfather Nathan Eugene Pike and Nancy Jane Lamb Pike (across the road from Mount Jesus) in 1885. Nathan's grandfather grew the first wheat in Clark County.

Nathan "Nate" grew up in the Lexington Township, Clark County and attended his first 2 ½ years of education in North Star Country School in the Lexington Community. He moved with his parents, sister Joan, and brother Cecil Dean to the Minneola community in November 1941 when they purchased the Pike Ranch. They all attended Minneola Public Schools.

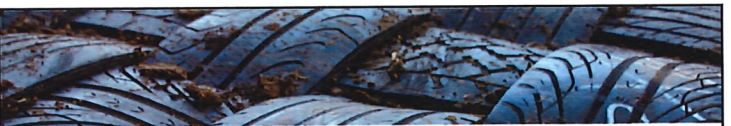
Nathan and Beverly Young were united in marriage on December 15, 1950 and have made their home on the Pike Ranch since 1954. To this union were born 3 sons, Kris Leon (died in infancy), Brad Eugene, and Byron Lee.

Nathan pastured cattle in several surrounding states: Oklahoma, Texas, Nebraska, Colorado, and New Mexico, and bought and sold cattle in all these areas. He has many friends in the business and kept in contact with a good many through the years. He did business with mostly a handshake – which was customary back years ago – not so much today. His word and honesty was a trait many respected. In later years, Nathan supported the livestock organizations, KCA and R-Calf USA. After his health deteriorated he had to turn the business over to the sons Brad and Byron, but continued to be involved in business decisions.

Nathan was preceded in death by parents Cecil and

Lula Belle (Dorsey) Pike, brother Cecil Pike, sister Joan Parnell, and infant son Kris. He is survived by devoted wife and partner of 67 years Beverly, son Brad (Sandra), son Byron (Melissa), grandchildren Heather Grigsby (Brandon), Missi Ryherd (Jerrod), and Jamie Pike, and 5 great grandchildren - Reese, Britton, and Kashlee Grigsby and Cole and Brooks Ryherd.

In lieu of flowers the family suggests memorials to the Minneola District Hospital in care of Minnis Mortuary, P.O. Box 459, Minneola, Kansas 67865.



— CATTLE MATS WITH — **PROVEN PREVENTION**

Non-slip and durable cattle mats from Double D Mats make unforgiving surfaces comfortable for all your cattle.



please contact us

p. 1.888.377.2879

w. DoubleDMats.com

The best kept secret in the feed business!

Liquid+
FEEDS

...has reduced pulls and death loss by more than 50% and also reduced antibiotic costs by more than 75%...

Make an impact on your operation.

IMPACT+DRENCH

PROBIOTIC / ENZYME / NUTRITIONAL DRENCH

Steve Garton - 620- 664-0252 Derrick England - 785-263-6488

SWIHART
Sales Company
- Mist Sprayers -

Excellent for spraying cattle, nurseries, vegetables, vineyards, orchards, Christmas Trees, livestock, mosquitos, chicken houses, etc.
American Made

References available in your area
Low Maintenance • High Performance • FREE Shipping

S.I. Feeders
Swihart Sales Company
7240 County Road AA, Quinter, KS

785-754-3513 or 800-864-4595
www.swihart-sales.com

The 20th Annual Kansas Cattlemen's Association Convention

The Kansas Cattlemen's Association has long-been committed to restoring profits, self-esteem, freedom, fair trade, trust, and community pride back to the farms, ranches and rural communities across Kansas and the nation. To accomplish these goals, the Board of Directors and KCA staff depend on input from independent cattle producers like you. The KCA Annual Membership Meeting will take place on Friday, November 9, 2018 at 4:30 p.m. at the Meridian Center in Newton, Kansas. This meeting is the one time each year where KCA members come together to review and set policy resolutions. This is a serious order of business, and we hope that you will make the time to attend this meeting.

Opportunities exist for active KCA members to engage in policy committee meetings on Friday, November 9th beginning at 10am. Members can choose to take part in committee meetings to help shape new and existing policies within KCA. Committees included are Animal Health & Welfare, Rural Rights & Economic Development, Marketing & Trade, KCA Beef Cooperative, and Beef Checkoff. If interested in taking part, please complete the committee interest form and return it to KCA or contact the committee coordinator, Stephanie, at 785-238-1483 or via email stephanie@kansascattlemen.com.

The 20th Annual KCA Convention and Trade Show will take place the same weekend as the membership meeting. The event is designed to provide a convenient time for us to all come together as independent cattle producers, discuss our industry, and gain insight into various aspects and regulations of independent cattle production. This is also an amazing opportunity to connect with producers from across the state, as well as meet with some exceptional exhibitors who most consistently support KCA.

The convention and trade show will begin at noon, Friday, November 9, 2018 with attendee registration, followed by Livestock Brand Inspector and Special

Agent, Kendal Lothman from the Kansas Attorney General's Office – Special Criminal Investigations Division. Dr. Don Coover of SEK Genetics will follow with a presentation on quality herd production. Friday evening will include a Cattlemen's BBQ and Social with Live Entertainment from Cowboy Poet & Western Singer, Geff Dawson.

Saturday, November 10th is set to be a day full of expert presentations. The day will begin with a presentation by Lance Sharp of Copeland Insurance and Stephanie Bittner of State Auto on KCA Membership Benefits. Shane New of Holton, an independent producer and soil conservation expert, will share his knowledge and expertise on optimum soil health and conservation. Shane has hosted several field day events on his farm and lends his practices of successful



as well as unsuccessful soil science and health. Dr. Tom Noffsinger of Production Animal Consultation will follow with a presentation on stockmanship. Dr. Tom specializes in animal handling and staff development. He grew up on a ranch in eastern Colorado and is a respected expert in the field of herd management, preventive and veterinary science, feedlot health, facility design and stockmanship. Tracy Hunt, a Wyoming livestock producer and attorney will wrap up with a talk outlining and explaining the basic principles of the Global Roundtable for Sustainable Beef initiative. He will further discuss the impact GRSB has on independent producers and the cattle market.

The convention will close with an evening social, the KCA Benefit Auction, and finally the Annual KCA Banquet with Keynote Speaker Bob Baker.

REGISTER TODAY! Please return the registration form on page 15 with payment for any meals. You may also register online at www.kansascattlemen.com or by calling 785-238-1483. Please contact the KCA office for student registration and press passes.

on & Trade Show - November 9th & 10 in Newton, Kansas 2018 Exhibitors

Executive Intelligence Review
GoBob Pipe & Steel Sales
HydraBed by Triple-C-Inc.
Mullerhaus
State Auto/Copeland Insurance
WaterTight Roofing, Inc.
Roto-Mix, LLC.
Natures Formula
Lewis Cattle Oilers
The Victor L. Phillips Co.
Straits Financial, LLC.
Liquid+ Feeds
Kauffman Seeds, Inc.
Livestock Nutrition Center

Multimin USA
Kansas Soybean Commission
Miller County Regional Stockyards
Schwieterman, Inc.
Kansas Agricultural Mediation Services
RanchLand Feed/ADM Alliance Nutrition
Ruma-Lic Liquid Feed
SweetPro Premium Feeds
Westway Feed Products
Hampel Oil
Sugar Creek Sales
Ag Boost
Joplin Regional Stockyards

Host Hotel

Be sure to request the Kansas Cattlemen's Association Rate

Holiday Inn Express

\$99.00/night plus tax

1430 E. Broadway Ct., Newton, KS 67114

Phone: (316) 804-7040

Schedule of Events

(Presentations and times may vary.)

Friday, November 9, 2018

10:00 AM Policy Submissions Open

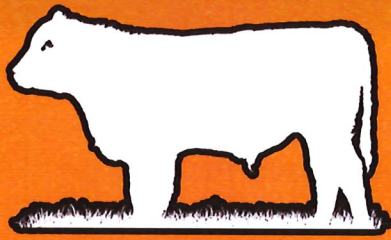
Committee Meetings

10:00 AM Animal Health & Welfare
10:00 AM Rural Rights & Economic Development
10:30 AM Marketing & Trade
10:30 AM Country of Origin Labeling
11:00 AM Kansas Cattlemen's Beef Cooperative
11:30 AM Beef Checkoff

12:00 PM Guest Registration/Trade Show Opens
1:15 PM Convention Opening Presentation
1:30 PM Kendal Lothman, Kansas Brand Inspector
2:30 PM Dr. Coover, SEK Genetics
3:30 PM Break
3:30 PM Deadline for Policy Pre-Submissions
4:30 PM Annual Membership Meeting
7:00 PM KCA Cattlemen's Supper & Social
Entertainment – Cowboy Poet & Western
Singer Geff Dawson

Saturday, November 10, 2018

8:45 AM Trade Show Opens
9:15 AM KCA Membership Benefits
10:00 AM Shane New, Soil Conservation
10:45 AM Break/Trade Show
11:15 AM Market Update with Schwieterman, Inc.
12:00 PM Luncheon
1:30 PM Dr. Tom Noffsinger, Stockmanship
2:45 PM Break
3:15 PM Tracy Hunt, Global Roundtable for
Sustainable Beef Research
4:30 PM KCA Social
5:00 PM KCA Benefit Auction
7:30 PM Annual Banquet
Keynote Speaker – Robert Baker



GOBOB PIPE & STEEL

CORRAL & FENCING MATERIALS



FORTRESS FENCE



MONSTER FENCE



HEAVY DUTY GATES



**TOP RAIL
POST
PIPE
POST CAPS**

**STEEL MAGIC
RODS
CLAMPS
POST LATCHS**

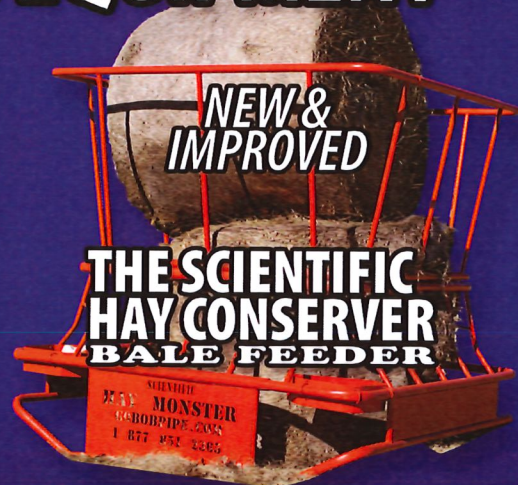


CABLE

CATTLE WORKING EQUIPMENT



**CUSTOM
CATTLE FLOW
COWBOY ALLEY**



**NEW &
IMPROVED**

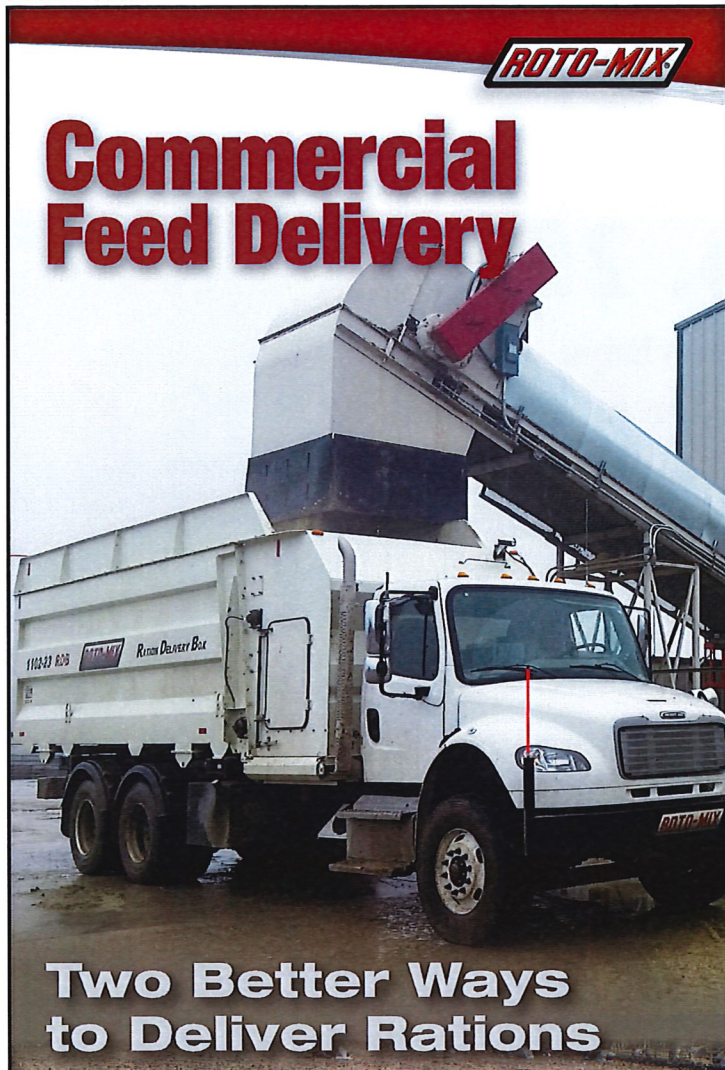
**THE SCIENTIFIC
HAY CONSERVER
BALE FEEDER**

MONSTER
GOBOB PIPE & STEEL
1-877-452-4385



844-304-4779

GobobCattlemen.com



Commercial Feed Delivery



Two Better Ways to Deliver Rations



Ration Delivery Box

- Rubber belt floor
- 1100-1200 cu. ft. capacity
- 48" wide stainless steel conveyor body unloads at high speeds

Commercial Feeder Box

- Choice of Two or Three Separate Sets of Chain and Slat Floor
- 760-1900 cu. ft. capacity
- Conveyor unloading for bunks or rear unloading for feed mill commodities

You'll recognize us by our look.* You'll remember us for our quality!
 * Smooth sided 3 panel look is a registered trademark of FSI Fabrication, LLC.



RDBCFB1



www.rotomix.com 620.225.1142

Negotiated Cash Slaughter Cattle

National

Period	Current	Prior Year	3yr Avg
Sept 03	76,180	68,340	88,636
Sept 10	127,667	55,558	76,342
Sept 17	122,306	106,315	102,006
Sept 24	125,251	123,245	77,666

Kansas

Period	Current	Prior Year	3yr Avg
Sept 03	6,382	11,104	11,573
Sept 10	24,724	9,121	10,824
Sept 17	15,253	23,078	18,285
Sept 24	24,311	20,043	7,687

Data Courtesy of USDA AMS



Dams ~ Site Prep ~ Land Leveling
 ~ Feedlot Construction ~ Terraces ~

Richard Dirks

770 W. Rd 270, Scott City, KS 67871
 620-872-1793



Luco Mfg. Co.

Hydraulic Chutes ~ Working Circles
 Cake Feeders ~ Continuous Fencing
 Panels & Gates

See Us at www.lucoinc.com
 1-888-816-6707



Offering a CHOICE of companies and risk management solutions tailored to fit YOUR needs since 1947

215 N. Main
 Garden City, KS
 800.633.0746



1515 E. 30th Ave.
 Hutchinson, KS
 800.362.2104

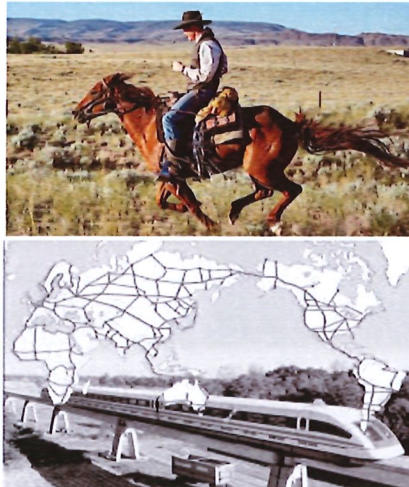
Hey, America! Beef Up! No. 25

**Wall Street and London Money-Boys
Desperately Trying to Hang On to
Their “Let the Tax Payers Bail Us Out Again” Policy.
New USA-Korean “Friendship Diplomacy” Shows:
We Can Get a
New Worldwide “Friendship” Economic System**

By Robert L. Baker

SEPT. 27, 2018. As many U.S. farmers and livestock producers are fighting to change the direction of mega-consolidation and integration of livestock production and below the cost of production pricing structures, the big global commodity companies and media are worked up over tariffs, as if “tariffs” caused the last 30 year wipe-out of hundreds of thousands of self-sustaining family farming operations. The tariff issue, in the U. S., is a crystal clear indicator that the U. S. has just been hit by the global economic and cultural paradigm shift, that is sweeping through Europe, like the Brexit (withdrawal from the European Union) pending in Britain, the collapse of the European Union vs. massive joint “win-win” infrastructure construction projects being launched in hundreds of countries jointly with China’s New Silk Road policy. Like the founders of the United States, people all over the world are fed up with the current unfair looting policies of mega-banks and connected corporations, disguised as “the magic of the market place,” meaning, their magic hand in your back pocket billfold. Let’s take a look at how this fight is manifesting itself currently.

At the United Nations the last week of September, came major announcements in the new USA-Korean ‘friendship diplomacy’ underway. It is historic; and despite the usual news media black-out, the significance does come through. President Donald Trump said there

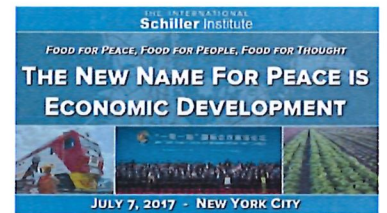


would soon be a second summit between him and North Korean Chairman Kim Yung-un. Trump met in person with South Korean President Moon Jae-in in New York, and discussed the prospects for denuclearization of the Korean Peninsula, which is part of finally making a peace treaty to end the Korean War after a 65-year stand-off! In 1953, fighting stopped only with an armistice. In mid-September, President Moon and Chairman Kim met for their third meeting, this time in Pyongyang.

There are solid plans underway for rail-line re-connections of North and South Korea, linking the peninsula up with Eurasia through China and Russia. This opens vast prospects for new industry, agriculture and development. The plans are part of a commitment to development in the Asian “Far East” district of Russia, which was discussed in early September, in Vladivostok, at the second annual Eastern Economic Forum, hosted by Russian President Vladimir Putin. A “new frontier” for agriculture is now open in this Siberian region.

In this context, the U.S. and South Korea announced a new trade deal on September 24, 2018. All this USA-Korean diplomacy shows that we can break with past practices, and set up new, mutually beneficial relations.

The second thing that it shows, is why President Trump has been so targeted for elimination from office,



Kim Jong Un visits China

- From March 25 to March 28, according to KCNA
- First foreign trip as leader since coming to power in 2011
- Said the trip was his "solemn duty", according to KCNA
- Vowed he is "committed to denuclearisation" Willing to hold summits with the South and the US
- Kim was accompanied by his wife Ri Sol Ju and several officials, KCNA said



© AFP Sources: Xinhua/KCNA

through the faked Russia-Gate, and a three-ring circus of other "acts" to hoodwink the public--sex-gate, obstruction-gate, business-gate, and you name it. The political/financial interests behind all this are centered in London. For decades, even centuries, they have relied on their geopolitical manipulations to maintain their control—in the Koreas, the Mid-East, Ireland, Africa, Central Asia, and more. The principle of friendship diplomacy is anathema to them.

On this score, it is now coming out strongly, that Britain—not Russia, is the foreign interest which intervened in our 2016 elections, and thereafter. The names involved include top MI6 agents: Sir Richard Dearlove, Christopher Steele, Stefan Halper; and top Australian intelligence agents--Alexander Downer, Erika Thompson. Getting all this exposed, and shutting it down, before the Mid-Term elections, is an urgent concern for every citizen. The documents Trump ordered declassified on Sept. 17, will expose this.

We are at a critical point of danger—if the geopolitical crowd continues to try to snooker us into more conflicts and wars, as in Syria, or against Russia. But also, once they are put out of the way, we can proceed to a new era of international relations, and make up for lost time.

To begin with, we need a replacement system—a "New Bretton Woods"—for the current City of London/Wall Street world monetary system, that is at the terminal phase of a blow-out, perhaps even before the Mid-Term elections, or by the end of the year. Total world debt has ballooned to some \$245 trillions, with trillions more in derivatives –bets on bets—on top of that. This is concentrated in the Trans-Atlantic, in the U.S. and Europe. Multiple categories of debt are shaky—corporate, auto, student loan, "emerging market," consumer credit, etc. The bubbles have way exceeded those which blew out in 2007-08. Either there is an emergency intervention to re-organize this mess, or chaos.



There are principles for a New Bretton Woods system, which can be discussed if the major powers convene the necessary dialogue—the United States, China, Russia, India and collaborating nations. At the U.N. General Assembly opening in September, the Schiller Institute issued a release on this, including 50 top signatories endorsing the idea.

What must we do here in the United States? Demand a reinstatement of the Glass-Steagall Act, which worked from 1933 to 1999, when it was wrongly repealed. It separates regular, commercial banking—which can

remain FDIC insured, from speculative financial companies, which should not be federally backed. End the mega-bank, bail-out system. Reorganize for sound banking through Federally-chartered, non-mega banks. Generate a surge of Federally-instigated credit for infrastructure-building and other

projects. Set up a national bank for focused credit, for TVA-class projects. Prioritize space and advanced nuclear energy frontiers. A plan for doing this, put out in 2014, is called the "Four Economic Laws" approach, by statesman-economist Lyndon LaRouche.

Coherent with this are the various needed agriculture policies, from parity-based pricing, to anti-trust actions, to tax and other incentives to foster waves of young farm families. The new five-year farm law, whenever and whatever its' final form, is a holding action until we can restore policy-making to what this nation originated as the American System. This was the application of the brilliant work of the first Treasury Secretary, Alexander Hamilton, to deliberately develop manufacturing and agriculture, and banking to serve the national interest, not the defeated British system.

We can take inspiration and guts from the Korean example.

Robert L. Baker, Agricultural Research Specialist, Executive Intelligence Review, bb888k@gmail.com



Committee Interest Form

Name: _____

Address: _____

City: _____ State _____ Zip _____

Home Phone: _____

Cell Phone: _____

Email: _____

Please select the committee(s) you are interested in serving:

<input type="checkbox"/>	Animal Health & Welfare
<input type="checkbox"/>	Rural Rights & Economic Development
<input type="checkbox"/>	Marketing & Trade
<input type="checkbox"/>	Country of Origin Labeling
<input type="checkbox"/>	Kansas Cattlemen's Beef Cooperative
<input type="checkbox"/>	Beef Checkoff

Which committee is your highest preference? _____

How many committees would you like to serve total? _____

Please describe your agriculture production activities:

Please describe qualifications you possess for each selected committee:

Please provide any other pertinent information:

Signature _____ Date: _____

Return to: Kansas Cattlemen's Association, P.O. Box 1489., Junction City, KS 66441



Health * Life * Investments * Senior Plans

Jim Phillips

“Where Service is #1 Priority”

(785) 945-3610
(800) 373-9559

(620) 727-3883 Mobile
Valley Falls, KS 66088-0160

Thank you for your Membership

Jeff Parrish
Gene Perkins
Tony Anderson
Tammy Savage
Tyler Anderson
Pete Fish
Darrin Unruh
Greg Campbell
Troy Lindberg
Jay Copeland
John George
Jon Starns

Spencer Crowther
Douglas Smith
Danny Langerot
Leroy Malone
Randy Downey
Michael Schultz
David Klein
Brian Stewart
Wendy Cantrell
Ron Staggs
Mark Kerr
Roger Medlin



AGRICULTURAL ENGINEERING ASSOCIATES, INC.

John A. George, P.E.
Chief Engineer

1000 Promontory Drive P 620-756-1000
PO Box 4 C 620-704-9122
Uniontown, KS 66779 F 620-756-4600
johng@agengineering.com

MIX 30™
THE HIGH ENERGY “ALTERNATIVE” LIQUID FEED

COW-CALF GRASS CATTLE CALF-CREEP GRAINS

STARTING CATTLE FINISHING CATTLE DAIRY CATTLE MIXES

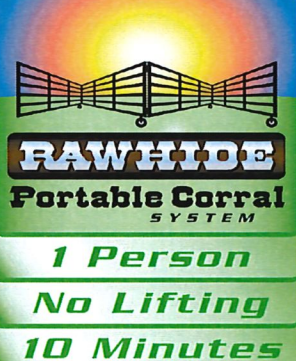
Contact us for information, pricing, or for the location of a dealer near you.

Call us Today at 800-575-7585



1374 Horned Owl Road
Horton, KS 66439
785-486-3302
Fax 785-486-3990
800-615-0299
www.natures-way.com

Dan Haverkamp
Producers of MSE
Direct Fed Microbial
for livestock



900 N. Washington St.
Abilene, KS 67410

(785) 263-3436
Fax (785) 263-3101
mary.rawhide@gmail.com
www.rawhideportablecorral.com

Rawhide Portable Corral & Livestock Equipment

1 Person
No Lifting
10 Minutes

Return registration form or call KCA at 785-238-1483.

Name: _____
Company: _____
Phone: _____
Address: _____
City: _____ State: _____ Zip: _____

Registration	QTY	Price	Total
Full Registration		\$85	
Friday Meal		\$25	
Saturday Luncheon		\$25	
Saturday Banquet		\$75	
TOTAL			

****List the name of each person that you would like to register below. A name tag will be issued based on this spelling. List additional names on back.****

Attendee Name _____ Attendee Name _____
Attendee Name _____ Attendee Name _____

Payment Information

_____ Check enclosed payable to KCA. Credit Card Number _____
Name on card _____ Card Expiration _____ CVC _____
Signature _____ Card Address _____

P.O. Box 1489 Junction City, KS 66441 Register Online at www.kansascattlemen.com.



Kansas Cattlemen's Association
 P.O. Box 1489
 Junction City, KS 66441

Presorted Standard
 U.S. Postage
 PAID
 Permit No 122
 Junction City, KS 66441
 Return Service Requested

-- KCA Feed Yards --

Support KCA and the Independent Producer
 Contact a KCA Feed Yard today

Double B&S Cattle Co.
 Mike Bartlett
 Fowler, KS
 (620) 885-4558

Ford County Feed Yard
 Danny Herrmann
 Ford, KS
 (620) 369-2252

Hoxie Feed Yard
 Scott Foote
 Hoxie, KS
 (785) 386-4519

Ottawa County Feeders
 Perry Owens
 Minneapolis, KS
 (785) 392- 2184

Learn more about these fine KCA feed yards on the KCA website!

THIRTY **30** SERIES™

HYDRABED

from
TRIPLE C
INC.

VISIT OUR WEBSITE TO
FIND A DEALER NEAR YOU!

902 Highway K246 - Sabetha, KS 66534 | Toll Free: 800-530-5624 | 785-284-3674 | www.triple-c-inc.com