

KCA News

KANSAS CATTLEMEN'S ASSOCIATION

November 2018

KCA Wraps up 20th Annual Convention and Trade Show

The Kansas Cattlemen's Association (KCA) hosted its 20th Annual Convention and Trade Show on November 9th and 10th at the Meridian Center in Newton, KS. The two-day meeting brought together producers from across Kansas and surrounding states. The convention began Friday morning, November 9th, with policy committee meetings. The schedule also included industry expert presentations, KCA's annual membership business meeting, professional entertainment, a trade show, the annual benefit auction and banquet.

Kicking off the industry expert presentations on Friday was Kendal Lothman, Special Agent, Livestock and Brand Investigation Unit for the Kansas Attorney General's Office and KS Dept. of Ag. Based out of Great Bend, Lothman discussed felony livestock theft, felony livestock pharmaceutical theft, and brand violations as well as assisting the KS Dept. of Ag with animal health emergencies in Kansas.

There were two case trends Lothman noted in relation to the 116 cases opened over 54 counties since 2014; thefts stay consistent whether markets are up or down and the increase in cases at the end of grazing seasons. He noted a high prevalence of incidents resulting from the demand for illegal narcotics.

Lothman noted time is of the essence when reporting missing cattle due to low odds of recovery after 24 hours. Livestock markets are key in detecting and catching outlaws who steal livestock. Producers who make an immediate report to local law enforcement are listed in the KS Dept. of Agriculture Stray/Stolen Livestock Report and have a greater chance of recovering their livestock. The use of branding, ear tags, tattooing, DNA sample ID and unique markings were all noted as means of identifying cattle when there is a theft.

Dr. Don Coover, owner and operator of SEK Genetics, Galesburg, rounding out Friday's expert presentations, discussed new technologies in Livestock Genetics and Animal Health. Dr. Coover covered SEK's embryo collection and

transfer service, IVF, artificial insemination (AI), AI training, heifer development, and veterinary services. SEK's lab services include bioPRYN pregnancy testing for cattle, sheep, goats, and bison, BVD PI, Johne's, Bovine Leukosis, Neospora, and CAE and OPP for goats and sheep. SEK is orientated toward advanced reproductive services and training, heifer development and sales, embryo transfer services and sales as well as herd health plans for producers. He educated participants on Neospora (the most common cause of spontaneous abortion in dairy and beef cattle in many parts of the U.S.), PI-BVDV, and Johne's, BLV and CAE. In closing, Dr. Coover encouraged all cattle producers to invest in and develop an established and well-designed testing and reproductive program using blood preg test results for cows and heifers to ensure herd health and maximize profitability.



Copeland Insurance's Lance Sharp and State Auto's Stephanie Bittner presented the State Auto Farm & Ranch Affinity Program to participants on Saturday. They outlined the benefits of the State Auto Affinity Dividend Program. The program is free and available to all KCA members that own State Auto Farm and Ranch policies.

Dr. Tom Noffsinger, veterinarian and owner/member of Production Animal Consultation, Pierson Precision Auscultation and the Cattle Performance Enhancement Company presented attendees with expert education and knowledge on low-stress cattle handling and stockmanship. He focuses on efficiency and believes if people who handle cattle can understand basic stockmanship principles, they will see a positive shift in disease incidence, performance and safety of both the animals and the people.

Schwieterman, Inc.'s, Jason Guenther and Brady Charles, gave a market update and analysis of cattle and other commodity markets. The annual update continues to be one of the most popular presentations at the KCA Annual Convention. Participants learned the latest on national and global cattle price trends for feeder and live cattle (retail, captive supplies, packer margins, African Swine Fever, steer price projections) as well as grain price trends for corn, beans and

Continued on Page 11

Board of Directors

Shawn Mills
President
Grenola, KS
(620)205-8100

shawntmills@gmail.com

Perry Owens
Vice President
(785)392-2184
Minneapolis, KS
ocfi@nckcn.com

Greg Davis
Sec./Treasurer
Madison, KS
(620)340-9534
ranchlandfeeds@gmail.com



Dave Murphy
Emporia, KS
(620)481-9607
davemurphy1720@gmail.com

Tony Anderson
Farlington, KS
(620)724-2860
tylertammytony@gmail.com

Nicole Pfrang
Goff, KS
(785)285-1066
nicpfrang@gmail.com

Andy Miller
Fall River, KS
(620)289-6168
andymiller2004@gmail.com

Contact KCA
 PO Box 1489
 Junction City, KS 66441
 Phone 785-238-1483
 Fax 785-238-1518
www.kansascattlemen.com
cowsrus@kansascattlemen.com

 110060188216
 @kansascattlemen

KCA Hosts 20th Annual Benefit Auction & Scholarship Drive

The Kansas Cattlemen's Association held its annual benefit auction on Saturday evening of the 20th Annual KCA Convention. KCA Board member, Andy Miller, donated his time and auctioneering skills for the event. TJ Mills, Emery Mills, Tyler Anderson, and Wyatt Miller served as runners.

Monies raised from the benefit auction support KCA and the KCA and Go-Bob Scholarship Program. A memorial scholarship was funded in honor of late KCA member Nathan Pike, a long-time supporter of the Benefit Auction. Bidders showed up big and contributed over \$1,500.

This year, KCA members DJ and Arlene Edwards, Edwards Cattle Co., donated a heifer and 2018 scholarship recipient Jade Edwards, daughter of DJ and Arlene, gave a full genetic description of the heifer before bidding commenced. Bidders battled for the prized heifer and the winning bid of \$1,200 went to KCA members Jim & Janie Barber. The


heifer will be delivered Spring 2019.

Other donors to the auction included: JL Angus, HydraBed by Triple C, Inc., Tom and Susan Hoisington, Ronnie and Wah-Leeta Rogers, Animal Health International, Sugar Creek Sales, Gary and Annette Schreiber, Behlen Country, Valley Vet Supply, Multimin USA Inc., Jodie McNutt, Jim and Janie Barber, Flint Hills Discovery Center, Tap House, Bourbon & Baker, Harry's Uptown, Pizza Hut Corp., Orscheln Farm & Home, Mullerhaus, Cracker Barrel, Wendy Cantrell – Miller County Regional Stockyards, Norm Oeding – Little Red Hen Ranch, Natures Formula, Screen Machine of Junction City, Travis Scale Company, Tyler Dupy, Sugar Creek Sales, Liquid+ Feeds, Jacot Ranch, First Choice Meats of Herington, Allan and Deanna Sents, and Cracker Barrel. KCA would like to thank the many donors and participants for their contributions and efforts in helping make the 20th Annual KCA Benefit Auction a huge success!

Thank you to these amazing Benefit Auction Winners!

Tony Anderson	John & Jean Edwards	Miller Cattle
Tammy Savage	John Ericson	Jan Miller
Jim Barber	Stephanie Errebo	Andy Miller
Janie Barber	Eureka Livestock	Patty Miller
Bonnie Owens	Colby Harner	Wyatt Miller
Dave Bowman	Bill Ireland	Mills Cattle
Wendy Cantrell	Jon Ireland	Shawn Mills
Cracker Cattle	John Jacot	Perry Owens
Dana Mills	David Jones	TJ & Emery Mills
Dr. Darwin Deets, DVM	Daryl Larson	Old Farms
Kim Woodall	GoBob Pipe & Steel	Paola Livestock
Arlene Edwards	McDaniels Trucking	Peck Bros. Cattle
DJ Edwards	Sweet Pro	R & A Rogers Cattle

The best kept secret in the feed business!



Liquid+
FEEDS

...has reduced pulls and death loss by more than 50% and also reduced antibiotic costs by more than 75%...

Make an impact on your operation.

IMPACT+DRENCH

PROBIOTIC / ENZYME / NUTRITIONAL DRENCH

Steve Garton - 620- 664-0252
Derrick England - 785-263-6488

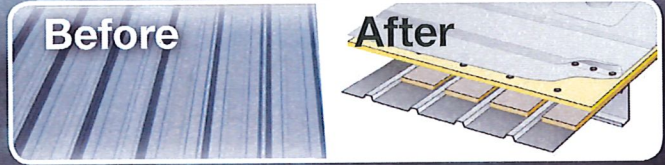


WATER TIGHT
ROOFING

COOLER COWS ARE HAPPIER COWS!

Elastomeric Coating

Single Ply Membrane



Claus Dairy Farm Dalhart



Centramatic

**No tear off and no disruption
to your production.**



"This was a very clean operation. It didn't cost more or take longer. They did exactly what they said they would do."

Dyke Rogers
Owner - CDFD



Serving Kansas, Texas, and Oklahoma

888-809-9976

www.watertightroofinginc.com



"WaterTight's commitment to excellence is just that - WaterTight!"

Larry Easley
Storage Management Associates, Inc
TSSA Board of Directors 2012-2015



Oklahoma Self Storage Association

Message from the President.....Shawn Mills

The 20th KCA Convention is completed and in the books. The presentations were so well rounded this year, touching on so many different aspects of cattle ranching. You would be hard pressed to not find something to help out your operation. Thank you to everyone that came and participated. It was great presentations, delicious food, amazing exhibitors, and a lot of fun.

The first day of convention was full of KCA policy work, and we accomplished so much. You learn so much during those policy meetings. I was impressed at the number of people that came and got involved in the committee meetings. Hats off to you folks! For those that couldn't make it, you'll see it with the bigger ballot! Make sure you vote.

Speaking of voting, we had some talk of affiliations with national organizations. For those of you that couldn't make it, there were two organizations proposed for affiliation. One didn't make it

onto the ballot, because you need a majority vote of the attending members to get it there. The one before you passed to the ballot by one vote. I'm not going to recommend how you vote, I just wanted to explain how we ended up there.

Finally, I would like to thank the KCA staff and the members of the Board of Directors for all of their hard work. Believe it or not, it's been less than a week since we left Newton, and the staff is already at work, planning next year's convention, and having the board making some decisions. The work never stops, and that's what makes me a proud KCA member.

Until next time,
Shawn Mills



Are You Interested in saving money?

KCA members are eligible for potential dividends! You could see a return on your insurance premiums.

- State Auto Farm and Ranch offers:
- A local agent
- Specialized coverages
- Competitive pricing
- Dividend potential
- Expertise with over 80 years writing farm insurance

Visit StateAuto.com/FindAnAgent to find a local agent and learn more.

FARM AND RANCH

StateAuto.com

This brochure is intended for general information purposes only, and is not an insurance policy. Eligibility, coverages, discounts, exclusions and benefits may vary by state. Coverages described are subject to definitions, limitations, exclusions and conditions. Please read the policy forms and endorsements for details.

Letter to the Editor

DON'T FORGET- WE'RE ALL IN THIS TOGETHER!

Congratulations to the KCA Board and office crew for, once again, pulling off a great annual convention.

We would like to address the KCA membership regarding the recent KCA ballot, namely, your vote on whether or not to have KCA affiliate with USCA (United States Cattlemen Assoc). We would like to suggest that KCA not affiliate with USCA. It's our personal opinion that we don't know enough about where they stand on KCA views. We certainly appreciate USCA on their claims of success on the legislative front, but we don't even know their by-laws and resolutions and how they compare to KCA's.

We both are proud to be long-time KCA members and supporters, and we remember what happened the last time KCA affiliated with a national organization and not the other. It caused a division. Right now we need to be standing shoulder-to-shoulder. We feel that we DO need to support BOTH organizations, but not as an affiliate. That said, financial contributions go a long way helping the national organizations fight the good fight, because it takes a lot of money to run a national organization. Our country is now being run by the judicial system. THAT is where R-CALF is spending time and resources. USCA is spending THEIR time making strides with the legislative system to help the producers as well, so they could both use our money and support.

As many of you heard at the convention, there are potentially scary times ahead for the cattle producers, and we need to stand together and fight for our families and livelihood. The bigger the group, the bigger the impact. Right now, we need impact.

This past summer, we, the Pfrang family, had the opportunity to host a round-table discussion with 8 local producers and U.S. Senator Corey Booker from New Jersey. This man is very liberal, but he wanted to learn more about the Beef Checkoff and other ag issues in the Midwest affecting independent producers. At first, I (David) didn't want to get involved because of his strong liberal view. But after giving it more thought, I realized that we could represent the producers and help him see our situation out here. And now, several months later, I'm glad he was here. He's one of the major democrats supporting us producers right now in Washington. The point here is that sometimes opposites DO attract.

If anyone in KCA wants to join USCA, that's fine. Just don't make that decision for us. We respectfully ask that you vote **NO** to affiliate with USCA, but to encourage the board to financially support as much as possible whichever national organization, be it R-CALF or USCA, is under fire on our behalf.

David Pfrang, former KCA board member



Gary Schreiber, former KCA board member



Thank you! 20th Annual KCA Conventi

AG-Boost
Mark Tague
13101 S. Pennsylvania Ave., Ste. 12
Oklahoma City, OK 73170
(405) 659-5684
mark@ag-boost.com
www.ag-boost.com

Conklin Cars
Randy White
1500 E. 3rd St.
Newton, KS 67114
(316) 283-1220
rwhite@conklincars.com
www.conklincars.com

Copeland Insurance Agency
Lance Sharp
111 S. Broadway St.
Riley, KS 66531
(785) 656-2686
lance@copelandins.com
www.copelandins.com

Executive Intelligence Review
Bob Baker
(703) 554-5397
bb888k@gmail.com

GoBob Pipe & Steel Sales
Bob Studebaker
P.O. Box 429
Mounds, OK 74047
(918) 827-4500
bob@gobobpipe.com
www.gobobpipe.com

Hampel Oil Distributors, Inc.
Ryan Seachris
2121 W. Mary St.
Garden City, KS 67846
(620) 275-7777
ryan.seachris@hampeloil.com
www.hampeloil.com

HydraBed by Triple C, Inc.
Brody Weinmann
902 K-246 Hwy.
Sabetha, KS 66534
(800) 530-5624
bweinmann@hydrabeds.com
www.hydrabeds.com

Insure My Forage
Kevin Gubbels
1502 N. 13th St., Suite 300
Norfolk, NE 68702
(402) 316-3229
prf@insuremyforage.com
www.insuremyforage.com

Kansas Agricultural Mediation Services
Char Henton
Kansas State University
Manhattan, KS 66506
(800) 321-3276
kams@ksu.edu
www.ksre.k-state.edu/kams

Kansas Soybean Commission
Dennis Hupe
1000 S.W. Red Oaks Pl.
Topeka, KS 66615
(785) 271-1040
hupe@kansassoybeans.org
www.kansassoybeans.org

Kauffman Seeds, Inc.
9218 S. Halstead St.
Hutchinson, KS 67501
(620) 465-2245

Lewis Cattle Oilers
(620) 408-6387
mbent.adriane@gmail.com
www.usalewiscattleoilers.com

Liquid+ Feeds
Steve Garton
9206 N. Nickerson Rd.
Nickerson, KS 67561
(620) 664-0252
www.liquidplusfeeds.com

Livestock Nutrition Center
Amy Shout
200 W. 11th Ave.
North Kansas City, MO 64116
(816) 842-6099
amys@LNC-online.com
www.LNC-online.com

Miller County Regional Stockyards
Wendy Cantrell
4 Kent Rd.
Eldon, MO 65026
(573) 392-5572
mcrstockyards@aol.com
www.mcrstockyards.com

Müllerhaus
Doug Miller
5200 S. Yale Ave., Suite 700
Tulsa, OK 74135
(918) 747-0018
kayloni@mullerhaus.net
www.mullerhauslegacy.com

Multimin USA
Shawn Ryan
2809 E. Harmony Rd., Suite 190
Fort Collins, CO 80528
(970) 372-2302
shawn@multiminusa.com
www.multiminusa.com

Natures Formula
Bill Strange
7645 County Road 3600
Brownsboro, TX 75756
(903) 286-3034
wlkrnatalie@aol.com
www.naturesformulainc.com

Primetime Livestock Video
a division of Joplin Regional Stockyards
Colby Flatt
10131 Cimarron Rd.
Carthage, MO 64836
(620) 870-9100
colby@joplinstockyards.com
www.primetimelivestock.com

RanchLand Feed, LLC.
Dealer: ADM Alliance Nutrition
Greg Davis
1210 S.W. Blvd.
Madison, KS 66860
(620) 340-9534
ranchlandfeeds@gmail.com

Roto-Mix, LLC.
Mark Cooksey
2205 E. Wyatt Earp Blvd.
Dodge City, KS 67801
(620) 225-1142
ewilson@rotomix.com
www.rotomix.com

Ruma-Lic Liquid Feed, LLC.
Tim Starbuck
802 Mill St.
Alva, OK 73717
(580) 430-6006
cowfeed@rumalic.com
www.rumalic.com

Trade Show Exhibitors & Sponsors

Schwieterman, Inc.

Luke Schwieterman

1616 E. Kansas Ave.

Garden City, KS 67846

(620) 275-4100/(800) 272-9131

www.upthelimit.com

State Auto Farm and Ranch Insurance

Stephanie Bittner

2955 N. Meridian St.

Indianapolis, IN 46208

(812) 708-2246

stephanie.bittner@stateauto.com

www.stateauto.com

Straits Financial, LLC.

Mike Zuzolo

425 S. Financial Pl., Suite 3990

Chicago, IL 60605

(312) 462-4499

info@straitfinancial.com

www.straitfinancial.com

Sugar Creek Sales

Colby Harner

6802 S. Salem Rd.

Partridge, KS 67566

(620) 200-4412

SweetPro Premium Feeds

Troy Gavin

1505 4th Ave. E.

Horton, KS 66439

(308) 386-8843

troy.gavin@sweetpro.com

www.sweetpro.com

The Victor L. Phillips Company

Jackie Mallory

4100 Gardner Ave.

Kansas City, MO 64120

(816) 241-9290

jmallory@vlpco.com

www.vlpco.com

WaterTight Roofing, Inc.

1121 W. Magnolia Ave.

Fort Worth, TX 76104

(888) 809-9976

jenni.marlow@wtroofs.com

www.watertightroofinginc.com

Westway Feed Products

Brett G. Curry

1282 2000 St.

Iola, KS 66749

(620) 228-0997

www.westwayfeed.com

CORPORATE

GoBob Pipe and Steel Sales

WaterTight Roofing, Inc.

PRIME

Animal Health International

Footo Cattle Co./Hoxie Feedyard

KFRM 550 AM

RanchLand Feed, LLC./ADM Alliance Nutrition

Ruma-Lic Liquid Feed, LLC.

State Auto Farm and Ranch Insurance

Edwards Cattle Company

CHOICE

AG-Boost * Agricultural Engineering Associates, Inc.

Allan & Deanna Sents * Eureka Livestock Sales

Huvepharma, Inc. * HydraBed by Triple C, Inc.

IDEXX Laboratories * Insure My Forage

INTRUST Bank, NA * ShurWrapTM

JL Angus – Lee & Janet Robbins * PlainJan's

Primetime Livestock Video - Joplin Regional Stockyards

Natures Formula * Zeitlow Distributing Co.

Rawhide Portable Corral, Inc. * Schwieterman, Inc.

Western Ag Reporter

SELECT

Dallas & Sarah Luthi High-Bred Simmental

Dodge City International, Inc.

Double D Family Mat Shop

Emporia Livestock Sales Co.

Farmers & Ranchers Livestock * Feed Train, LLC.

High Plains Farm Credit * Kauffman Seeds, Inc.

Ottawa County Feeders * Paola Livestock Auction

Peck Bros. Cattle Co. * Rex Stanley Feedyard, Inc.

Schreiber Red Angus - Gary & Annette Schreiber

CONTRIBUTOR

AgRisk Advisors * Agri Trails COOP * Central Livestock

Conklin Cars * Countryside Feed, LLC.

DeLange Seed House, Inc. * Dirks Earthmoving Co.

El Dorado Livestock Auction, Inc. * Emprise Bank

Farmers Alliance Mutual Insurance * Farm Talk Newspaper

First Bank Kansas * KEY Feeds * Lewis Cattle Oilers

Liquid+ Feeds * Mid Kansas Cooperative

Midwest Mixer Service, LLC. * Mix 30 Liquid Feed

Müllerhaus * Multimin USA, Inc. * Rush-Co

Roto-Mix, LLC. * Skyland Grain, LLC. * Travis Scale Company

Valley Vet Supply * Xtra Factors * Timber & Jerrilynn Wood

ef-fi-cient e'fiSHent

adjective

1. achieving maximum productivity with minimum wasted effort or expense.
2. working in a well-organized and competent way.

synonyms: cost-effective, businesslike, productive, labor-saving.

Raising cattle for you is not a hobby.

You're in it to make money. You want equipment that allows you to do the job faster, safer and for less labor. Equipment that is built to last, that won't break down on you when you need it the most but that's not all you need. You need equipment that is designed to help your cattle to continually flow through your system that causes less stress on them, and on you!



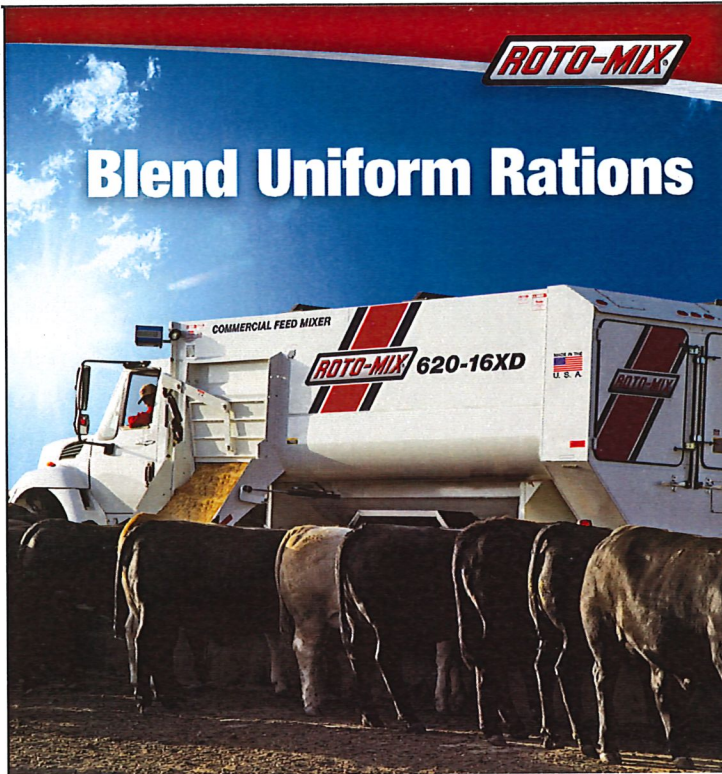
Curt Pate works cattle through GoBob's Cattle Flow® No Corner Tub, Diverter Gate and Cowboy Alley.

In a word, that's what GoBob's CATTLE FLOW® equipment is ...efficient!



844-300-6065

GobobEquip.com



Blend Uniform Rations



SWIHART
Sales Company
- Mist Sprayers -

Excellent for spraying cattle, nurseries, vegetables, vineyards, orchards, Christmas Trees, livestock, mosquitos, chicken houses, etc.
American Made



References available in your area

Low Maintenance • High Performance • FREE Shipping

S.I. Feeders

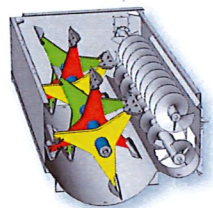
Swihart Sales Company
7240 County Road AA, Quinter, KS



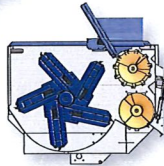
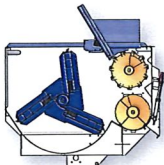
785-754-3513 or 800-864-4595

www.swihart-sales.com

Producers from Cow/Calf and Stockers to Commercial Feeders rely on Roto-Mix for the right feed mixer to fit their operation.



Patented Staggered Rotor Option
GeneRation II is ideal for feeding rations that require wet distillers grains.

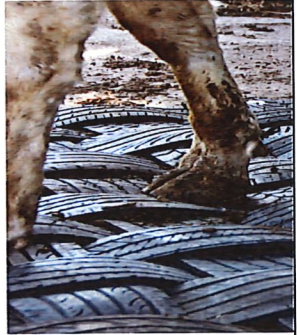


3, 5 and 6-Bar Option
Rotary Mixers allow more leaves and particle length during mixing with hay.

Our rotary feed mixers are available with a choice of rotor styles to better mix your specific kind of rations. Commercial series mixers are available in 540 to 920 cu ft. truck, trailer and stationary models.

CATTLE MATS WITH PROVEN PREVENTION

Non-slip and durable cattle mats from Double D Mats make unforgiving surfaces comfortable for all your cattle.



please contact us

p. 1.888.377.2879
w. DoubleDMats.com

Health * Life * Investments * Senior Plans

Jim Phillips

"Where Service is #1 Priority"

(785) 945-3610
(800) 373-9559

(620) 727-3883 Mobile
Valley Falls, KS 66088-0160



www.rotomix.com 620.225.1142

Bill Ireland Honored During KCA Annual Banquet with Awarding of 2018 KCA Legacy Award

KCA Awarded the 2018 Legacy Award on November 10th, 2018 at the Annual KCA Banquet to Mr. William "Bill" Ireland. Bill had been on an Veteran's Honor Flight to Washington, D.C. the day before the banquet, arriving home here in Kansas at 3:00 am.

Always committed to attending the annual convention, Bill slept a few hours, and then made his way to Newton, unaware he was this year's recipient.

Bill is a multi-generational rancher from Yates Center in Woodson County, KS. As an independent cattlemen, Bill has been influential in improving the cattle industry for the benefit of cattlemen throughout the state and country. Bill has served on the KCA Board, regularly attended regional meetings and KCA Conventions.

In addition to policy work at the state level, Bill has traveled to Washington, D.C. in pursuit of policy changes to the Beef Checkoff as well as other regulation and legislation. He is an avid supporter of KCA, and one of KCA's biggest membership recruiters.



Left to Right: Shawn Mills, Bill Ireland, Jon Ireland

CIA COPELAND INSURANCE AGENCY

**MANHATTAN · ABILENE · JUNCTION CITY · KANSAS CITY
MARYSVILLE · RILEY · SALINA · TOPEKA · WAMEGO
WE ARE A STATE AUTO LICENSED AGENCY**

SERVICING ALL OF KANSAS

**OUR AGENCY CREATED THE FARM DIVIDEND PROGRAM WITH
YOUR NEEDS IN MIND**

CONTACT US TODAY AND SEE IF STATE AUTO IS A GOOD FIT FOR YOUR OPERATION



JAY COPELAND
785-410-5509



LANCE SHARP
785-656-2686



LINDEN STUEVE
620-794-8359



MIKE SPOHN
785-210-6155

**Specializing in innovative risk management strategies for farmers and
commercial agriculture!**

www.copelandins.com

KCA Convention (Continued from Page 1)

wheat. The market update also provided an excellent opportunity for attendees to ask questions of the brokers.

Practicing Wyoming Attorney and cattle rancher, Tracy Hunt gave an intriguing and informative presentation on the Global Roundtable for Sustainable Beef (GRSB). For the last five years, Tracy has been engaging audiences in the ag and cattle industry with this presentation and shared his research on

the GRSB and the details of how this movement intends to assist multinational corporations in efforts to capture the live cattle supply chain away from independent cattle producers.

Shane New, K-State grad, stockman and owner of New Family Farms, Holton, KS, educated attendees on his collective period of trials and errors that resulted in established and verifiable results in his new-found approach to soil health and integrity. Shane explained his examination of fertilizer and topical-application inputs for his farm's production and concluded there to be a more economical and conservation-minded approach to soil health on his own operation. One that did not include huge cost inputs for fertilizer and weed control. New also laid out his practices and beliefs including no-tilling, cover crops, rotation grazing, and adaptive grazing and how others can begin to implement a regenerative agricultural program for their own operation.



Luco Mfg. Co.
 Hydraulic Chutes ~ Working Circles
 Cake Feeders ~ Continuous Fencing
 Panels & Gates
 See Us at www.lucoinc.com
 1-888-816-6707



Offering a CHOICE of companies and risk management solutions tailored to fit YOUR needs since 1947

215 N. Main
 Garden City, KS
 800.633.0746

KFSA
 AGENCY
 More Than Just Insurance!


1515 E. 30th Ave.
 Hutchinson, KS
 800.362.2104



DIRKS EARTHMOVING
 Scott City, Kansas

Dams ~ Site Prep ~ Land Leveling
 ~ Feedlot Construction ~ Terraces ~

Richard Dirks
 770 W. Rd 270, Scott City, KS 67871
 620-872-1793



AGRICULTURAL ENGINEERING ASSOCIATES, INC.

John A. George, P.E.
 Chief Engineer

1000 Promontory Drive P 620-756-1000
 PO Box 4 C 620-704-9122
 Uniontown, KS 66779 F 620-756-4600
johnag@agengineering.com

MIX 30™
 THE HIGH ENERGY "ALTERNATIVE"
 LIQUID FEED

COW-CALF GRASS CATTLE CALF-CREEP GRAINS

STARTING CATTLE FINISHING CATTLE DAIRY CATTLE MIXES

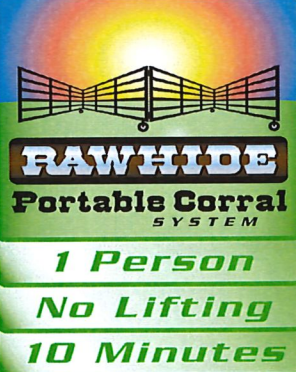
Contact us for information, pricing, or for the location of a dealer near you.

Call us Today at 800-575-7585



1374 Horned Owl Road
 Horton, KS 66439
 785-486-3302
 Fax 785-486-3990
 800-615-0299
www.natur-s-way.com

Dan Haverkamp
 Producers of MSE
 Direct Fed Microbial
 for livestock



900 N. Washington St.
 Abilene, KS 67410

(785) 263-3436
 Fax (785) 263-3101
mary.rawhide@gmail.com
www.rawhideportablecorral.com

Rawhide Portable Corral & Livestock Equipment

1 Person
 No Lifting
 10 Minutes



Kansas Cattlemen's Association
PO Box 1489
Junction City, KS 66441

Presorted Standard
U.S. Postage
PAID
Permit No 122
Junction City, KS 66441
Return Service Requested

-- KCA Feed Yards --

Support KCA and the Independent Producer
Contact a KCA Feed Yard today

Double B&S Cattle Co.
Mike Bartlett
Fowler, KS
(620) 885-4558

Ford County Feed Yard
Danny Herrmann
Ford, KS
(620) 369-2252

Hoxie Feed Yard
Scott Foote
Hoxie, KS
(785) 386-4519

Ottawa County Feeders
Perry Owens
Minneapolis, KS
(785) 392- 2184

Learn more about these fine KCA feed yards on the KCA website!

THIRTY **30** SERIES™

HYDRABED

from
TRIPLE C
INC.

VISIT OUR WEBSITE TO
FIND A DEALER NEAR YOU!

902 Highway K246 - Sabetha, KS 66534 | Toll Free: 800-530-5624 | 785-284-3674 | www.triple-c-inc.com